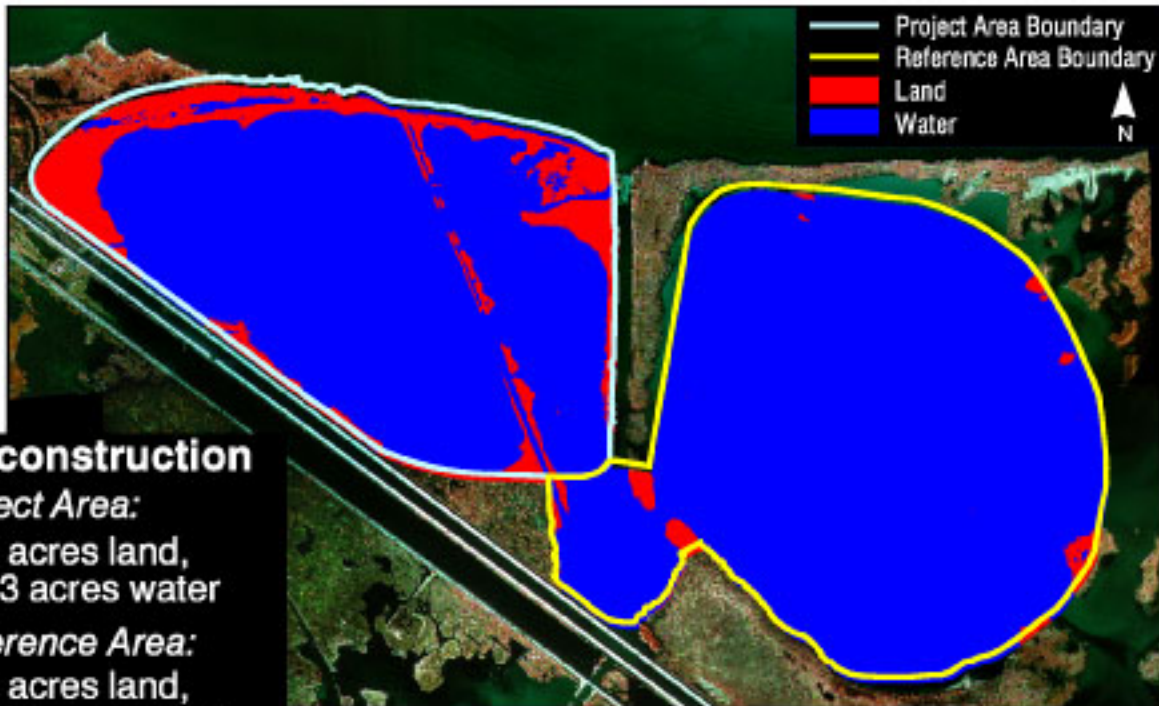
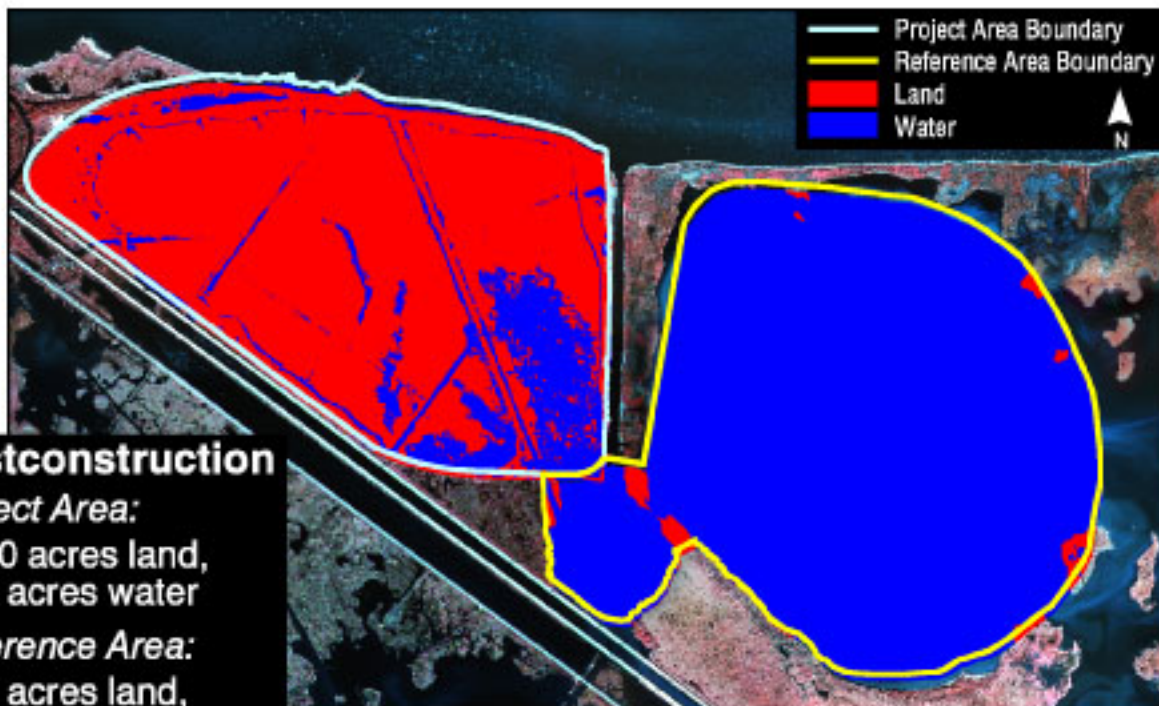


# Bayou La Branche (PO-17): GIS Land/Water Analysis



**Preconstruction**  
*Project Area:*  
 80.8 acres land,  
 355.3 acres water  
*Reference Area:*  
 11.6 acres land,  
 504.0 acres water

1:12,000 scale aerial photography taken November 7, 1993, shown here at 1:25,000 scale.

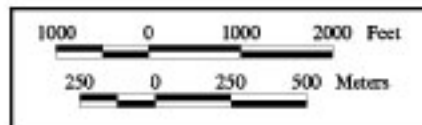


**Postconstruction**  
*Project Area:*  
 356.0 acres land,  
 80.0 acres water  
*Reference Area:*  
 11.2 acres land,  
 504.3 acres water

1:12,000 scale aerial photography taken November 17, 1997, shown here at 1:25,000 scale.

U.S. Department of the Interior  
 United States Geological Survey  
 National Wetlands Research Center  
 Lafayette, Louisiana

Federal Sponsor:  
 U.S. Army Corps of Engineers



Louisiana Department of Natural Resources  
 Coastal Restoration Division  
 New Orleans Project Office

Map ID: 98-2-019