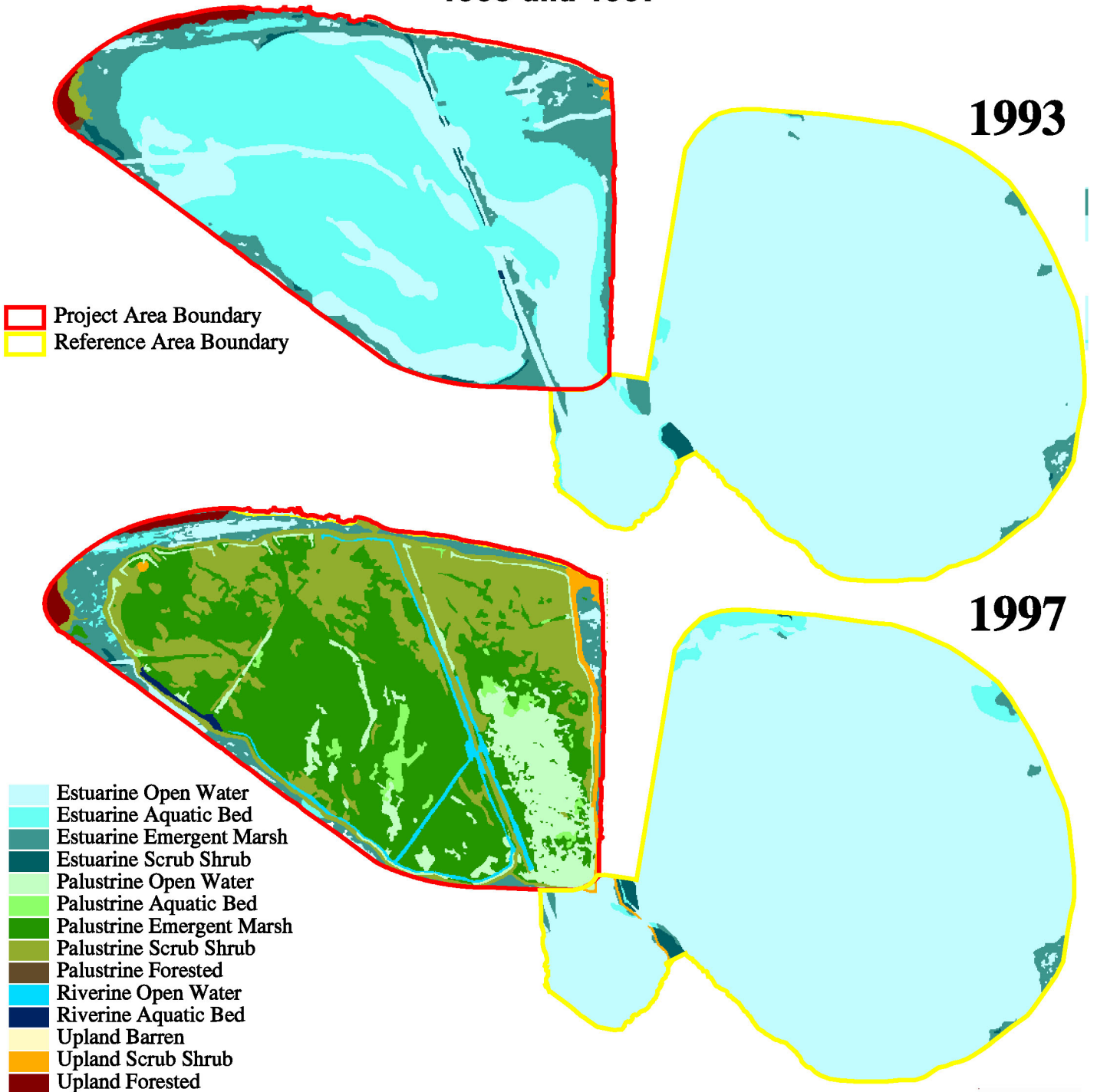
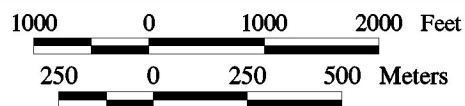


# Bayou La Branche (PO-17): Habitat Types and Distribution in 1993 and 1997



Project Area Boundary  
 Reference Area Boundary

- Estuarine Open Water
- Estuarine Aquatic Bed
- Estuarine Emergent Marsh
- Estuarine Scrub Shrub
- Palustrine Open Water
- Palustrine Aquatic Bed
- Palustrine Emergent Marsh
- Palustrine Scrub Shrub
- Palustrine Forested
- Riverine Open Water
- Riverine Aquatic Bed
- Upland Barren
- Upland Scrub Shrub
- Upland Forested



Habitat data were derived from photointerpreted  
 1:12,000 scale aerial photography taken  
 November 7, 1993 and November 17, 1997.  
 Data are shown here at 1:24,000 scale.

Prepared by  
 U.S. Department of the Interior  
 U.S. Geological Survey  
 National Wetlands Research Center  
 Lafayette, Louisiana

Federal Sponsor:  
 U.S. Army Corps of Engineers



Louisiana Department of Natural Resources  
 Coastal Restoration Division  
 New Orleans Project Office