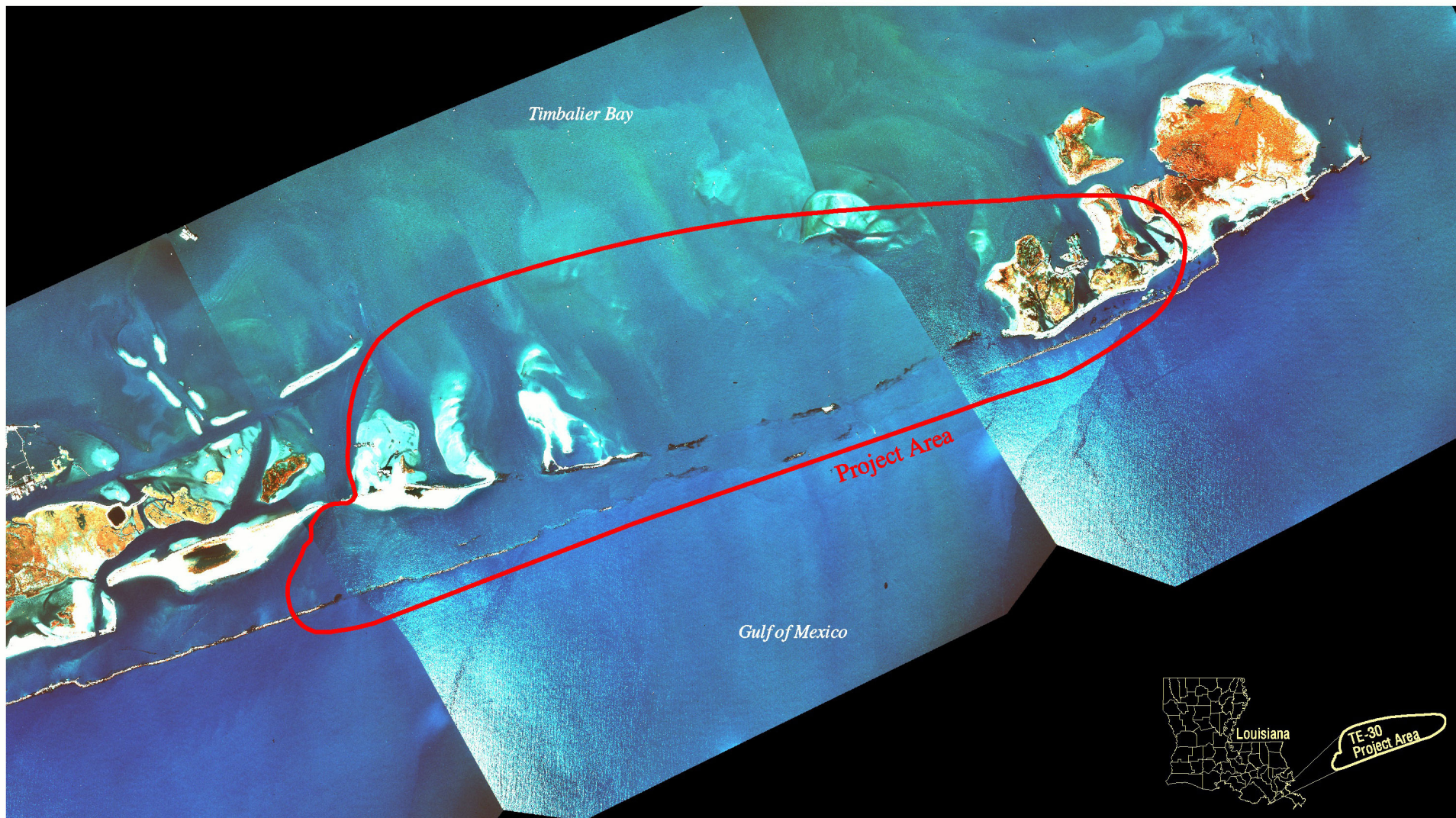


# East Timbalier Island Sediment Restoration Phase II (TE-30)

## Coastal Wetlands Planning, Protection and Restoration Act

### 1997 Photomosaic

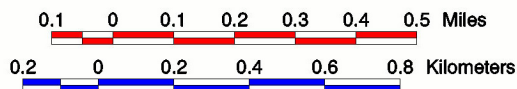


TE-30  
Project Area

Prepared by:  
U.S. Department of the Interior  
U.S. Geological Survey  
National Wetlands Research Center  
Lafayette, LA  
and  
Louisiana Department of Natural Resources  
Coastal Restoration Division  
Thibodaux Field Office



Scale = 1:20,000



Source:  
1:12,000 scale color-infrared aerial  
photography obtained November 8, 1997.

Federal Sponsor:



Map ID: 00-02-091