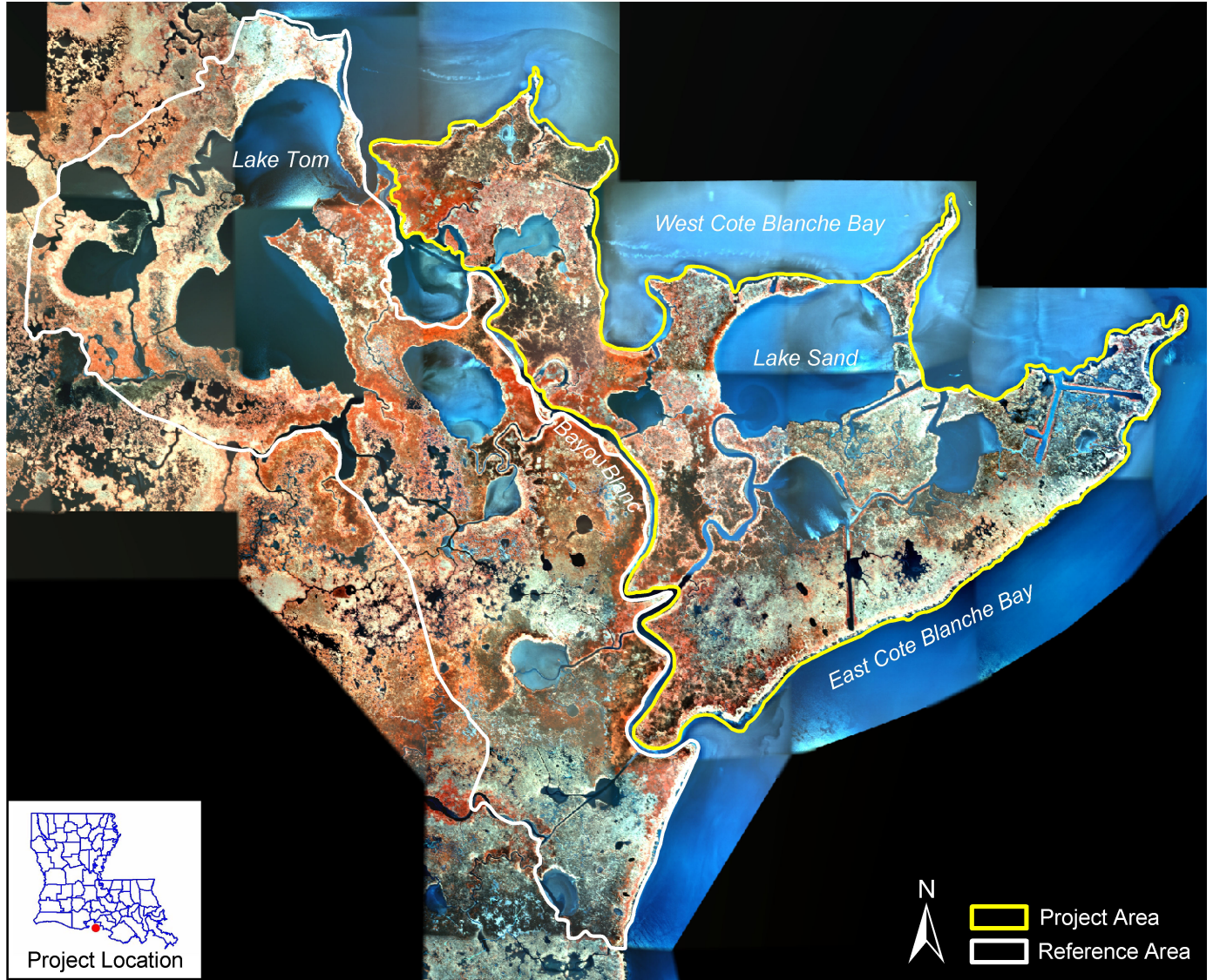




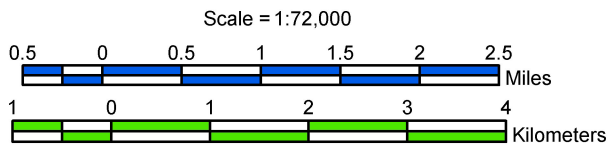
# Marsh Island Hydrologic Restoration (TV-14)

## Coastal Wetlands Planning, Protection and Restoration Act

2000 Photomosaic



Prepared by:  
U.S. Department of the Interior  
U.S. Geological Survey  
National Wetlands Research Center  
Lafayette, Louisiana  
and  
Louisiana Department of Natural Resources  
Coastal Restoration Division  
Lafayette Field Office



Federal Sponsor:  
US Army Corps of Engineers



Map ID: USGS-NWRC 2004-02-0004