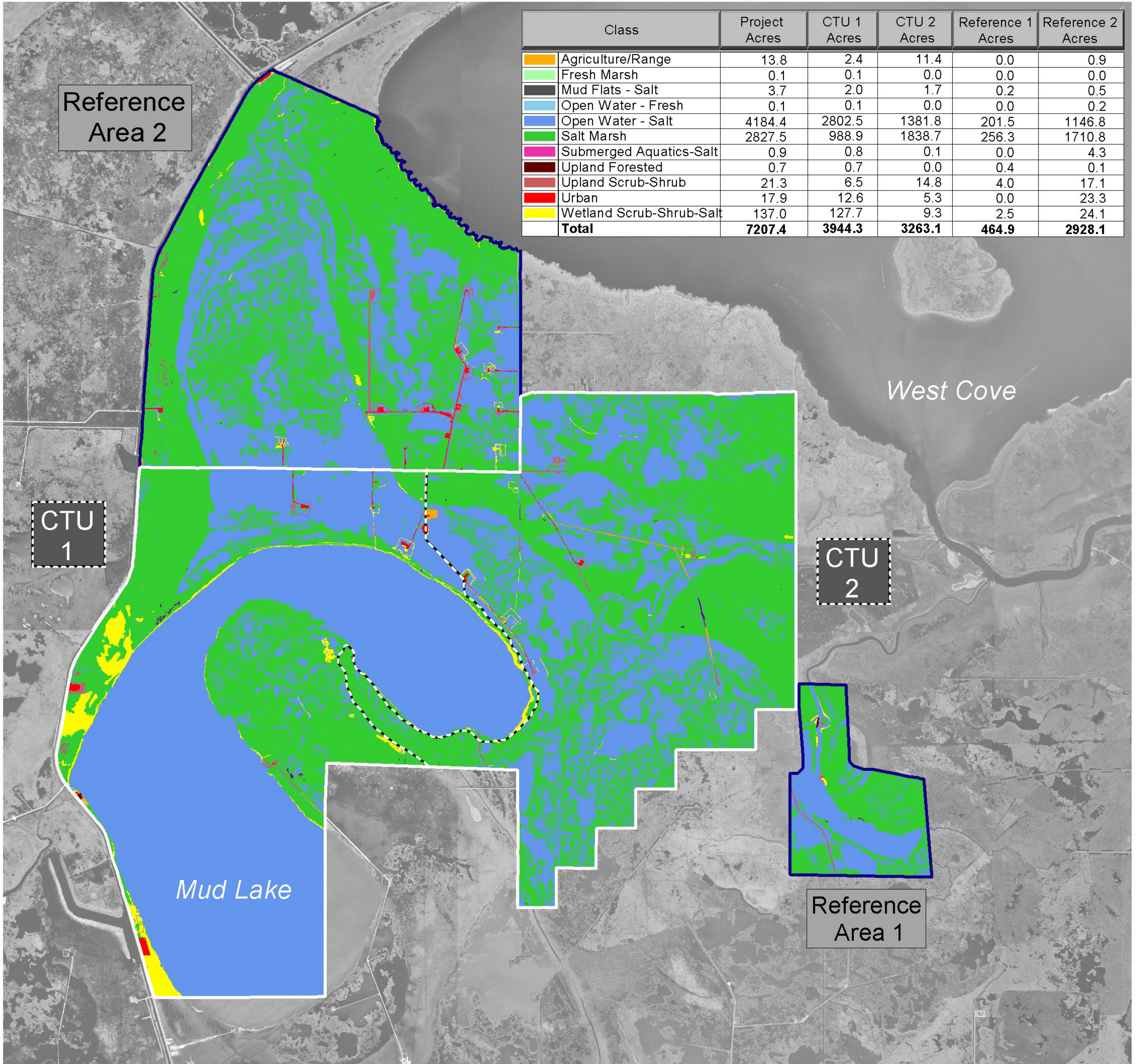


East Mud Lake Marsh Management (CS-20)

Coastal Wetlands Planning, Protection and Restoration Act 1994 Habitat Analysis



Project Location:



Data Source:
Habitat data were derived from 1:12,000 scale color-infrared photography. Preconstruction photography was obtained December 26, 1994. Classes are based on "Classification of Wetlands and Deepwater Habitats of the United States" (Cowardin and others, 1979, FWS/OBS-79/31) as modified for the National Wetlands Inventory mapping conventions. The data were overlaid on a 1998 DOQQ image at 1:60,000 scale.

- Project Area
- Reference Areas
- Conservation Treatment Units (CTUs)

Scale = 1: 60,000



Prepared by:
U.S. Department of the Interior
U.S. Geological Survey
National Wetlands Research Center
Lafayette, Louisiana
and
Louisiana Department of Natural Resources
Coastal Restoration Division
Lafayette Field Office
Lafayette, Louisiana

Federal Sponsor:
U.S. Department of Agriculture
Natural Resources Conservation Service