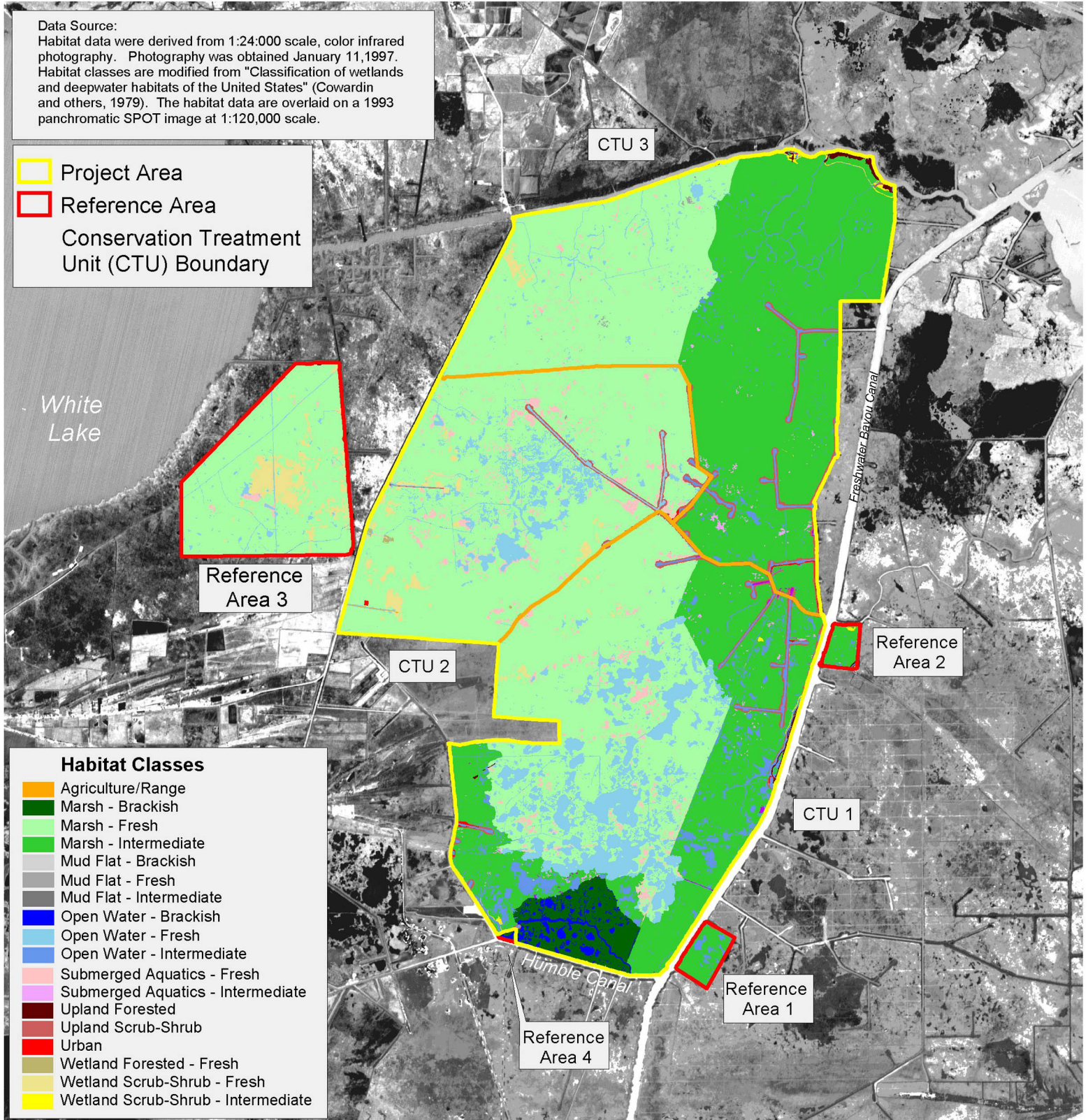


**Data Source:**  
 Habitat data were derived from 1:24,000 scale, color infrared photography. Photography was obtained January 11, 1997. Habitat classes are modified from "Classification of wetlands and deepwater habitats of the United States" (Cowardin and others, 1979). The habitat data are overlaid on a 1993 panchromatic SPOT image at 1:120,000 scale.

- Project Area
- Reference Area
- Conservation Treatment Unit (CTU) Boundary

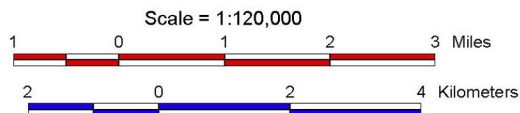


#### Habitat Classes

- Agriculture/Range
- Marsh - Brackish
- Marsh - Fresh
- Marsh - Intermediate
- Mud Flat - Brackish
- Mud Flat - Fresh
- Mud Flat - Intermediate
- Open Water - Brackish
- Open Water - Fresh
- Open Water - Intermediate
- Submerged Aquatics - Fresh
- Submerged Aquatics - Intermediate
- Upland Forested
- Upland Scrub-Shrub
- Urban
- Wetland Forested - Fresh
- Wetland Scrub-Shrub - Fresh
- Wetland Scrub-Shrub - Intermediate

Prepared by:  
 U.S. Department of the Interior  
 U.S. Geological Survey  
 National Wetlands Research Center  
 Lafayette, LA  
 and  
 Louisiana Department of Natural Resources  
 Coastal Restoration Division  
 Lafayette Field Office

Project Location:



Federal Sponsor:  
 U.S. Department of Agriculture  
 Natural Resources Conservation Service



Map ID: USGS-NWRC 2005-02-0005