



Oaks/Avery Canal Hydrologic Restoration, Increment 1 (TV-13a)

Coastal Wetlands Planning, Protection and Restoration Act

2002 Land-Water Analysis

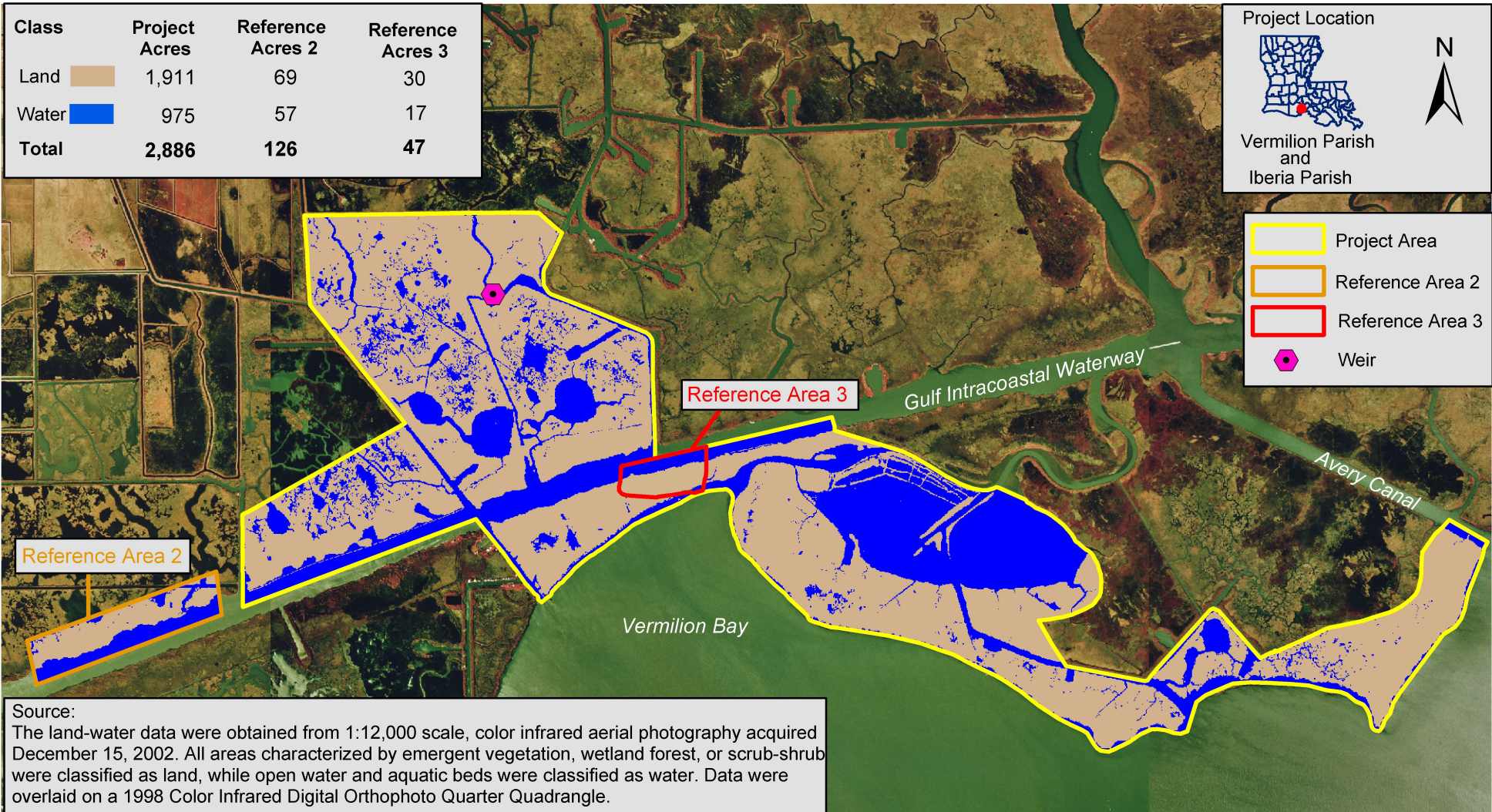


Class	Project Acres	Reference Acres 2	Reference Acres 3
Land	1,911	69	30
Water	975	57	17
Total	2,886	126	47

Project Location

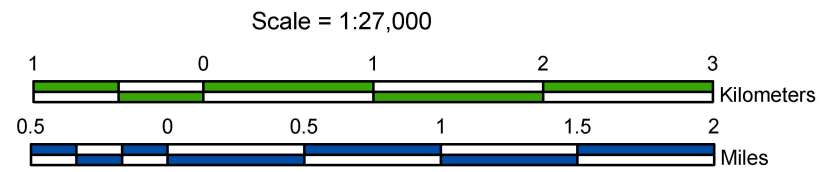
Vermilion Parish and Iberia Parish

- Project Area
- Reference Area 2
- Reference Area 3
- Weir



Source:
 The land-water data were obtained from 1:12,000 scale, color infrared aerial photography acquired December 15, 2002. All areas characterized by emergent vegetation, wetland forest, or scrub-shrub were classified as land, while open water and aquatic beds were classified as water. Data were overlaid on a 1998 Color Infrared Digital Orthophoto Quarter Quadrangle.

Prepared by:
 U.S. Department of the Interior
 U.S. Geological Survey
 National Wetlands Research Center
 Lafayette, Louisiana
 and
 Louisiana Department of Natural Resources
 Coastal Restoration Division
 Lafayette Field Office



Federal Sponsor:
 U.S. Department of Agriculture
 Natural Resources Conservation Service



Map ID: USGS-NWRC 2005-02-0012