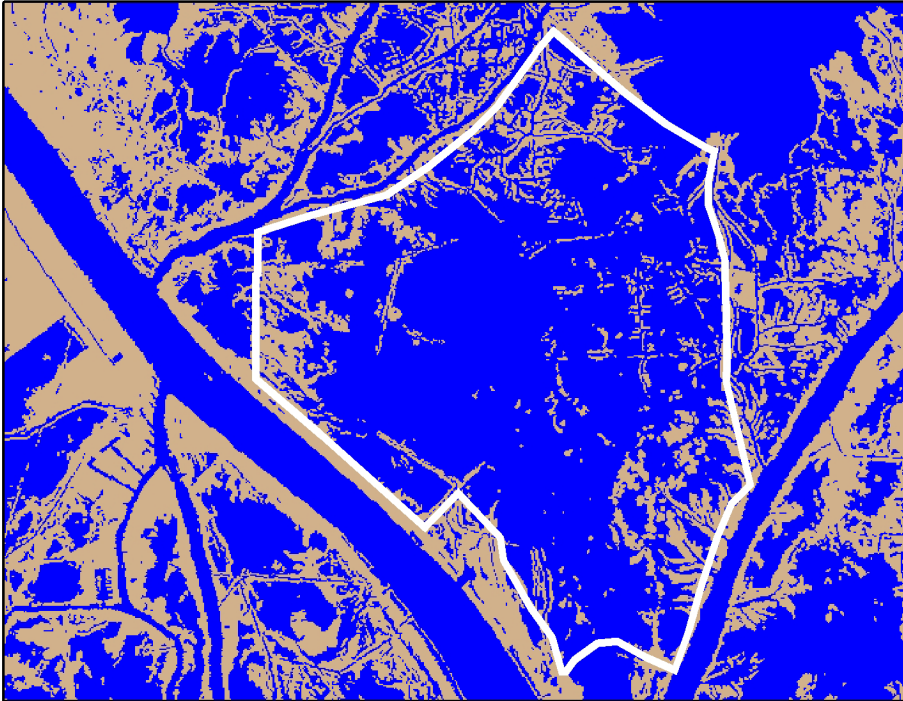




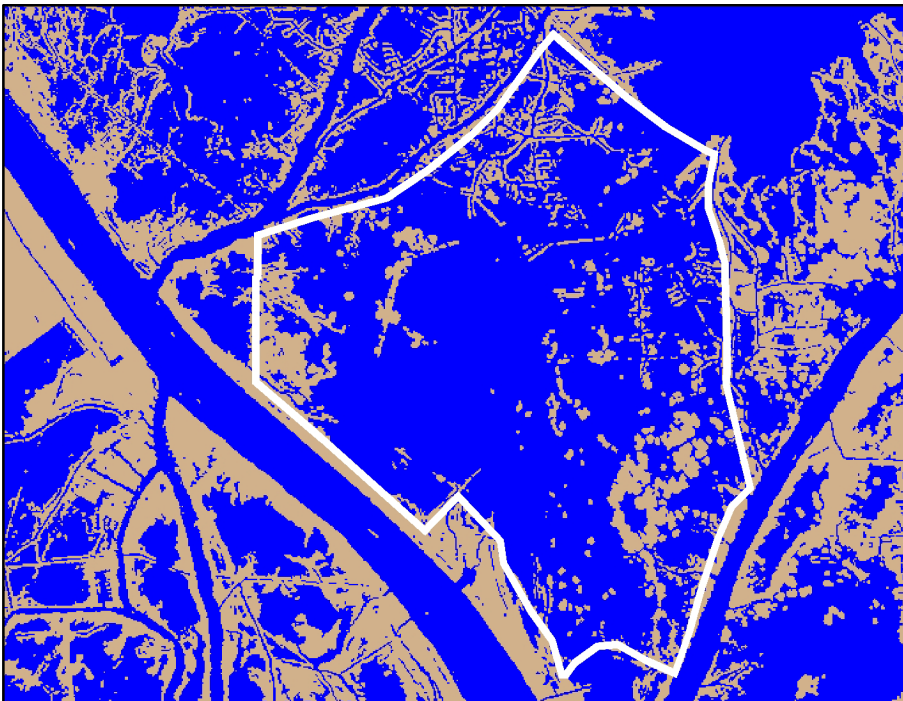
Land/Water Analysis of Benneys Bay (MR-13) Version 2





1990 Land/Water

Class	Acres	Percent
 Water	12,938	80%
 Land	3,287	20%
	<hr/> 16,225	<hr/> 100%

1990 Landsat 5 TM Classified Land/Water Data
Image Acquisition Date - November 1, 1990.



2000 Louisiana Coastal Area Land/Water

Class	Acres	Percent
 Water	12,980	80%
 Land	3,245	20%
	<hr/> 16,225	<hr/> 100%

The 2000 Louisiana Coastal Area Land/Water Data Composition:
Fall 1999 and Winter 2002 land/water classified data combined to create the 2000 Louisiana Coastal Area Land/Water Classified Mosaic
Land/Water classified data for this project area - January 03, 2002



Scale 1:140,000

Land/Water Data Source:
U.S. Department of the Interior
U.S. Geological Survey
National Wetlands Research Center

Map Produced By:
U.S. Department of the Interior
U.S. Geological Survey
National Wetlands Research Center
Coastal Restoration Field Station
Baton Rouge, La

Map ID: USGS-NWRC 2006-11-0026
Map Date: December 1, 2005