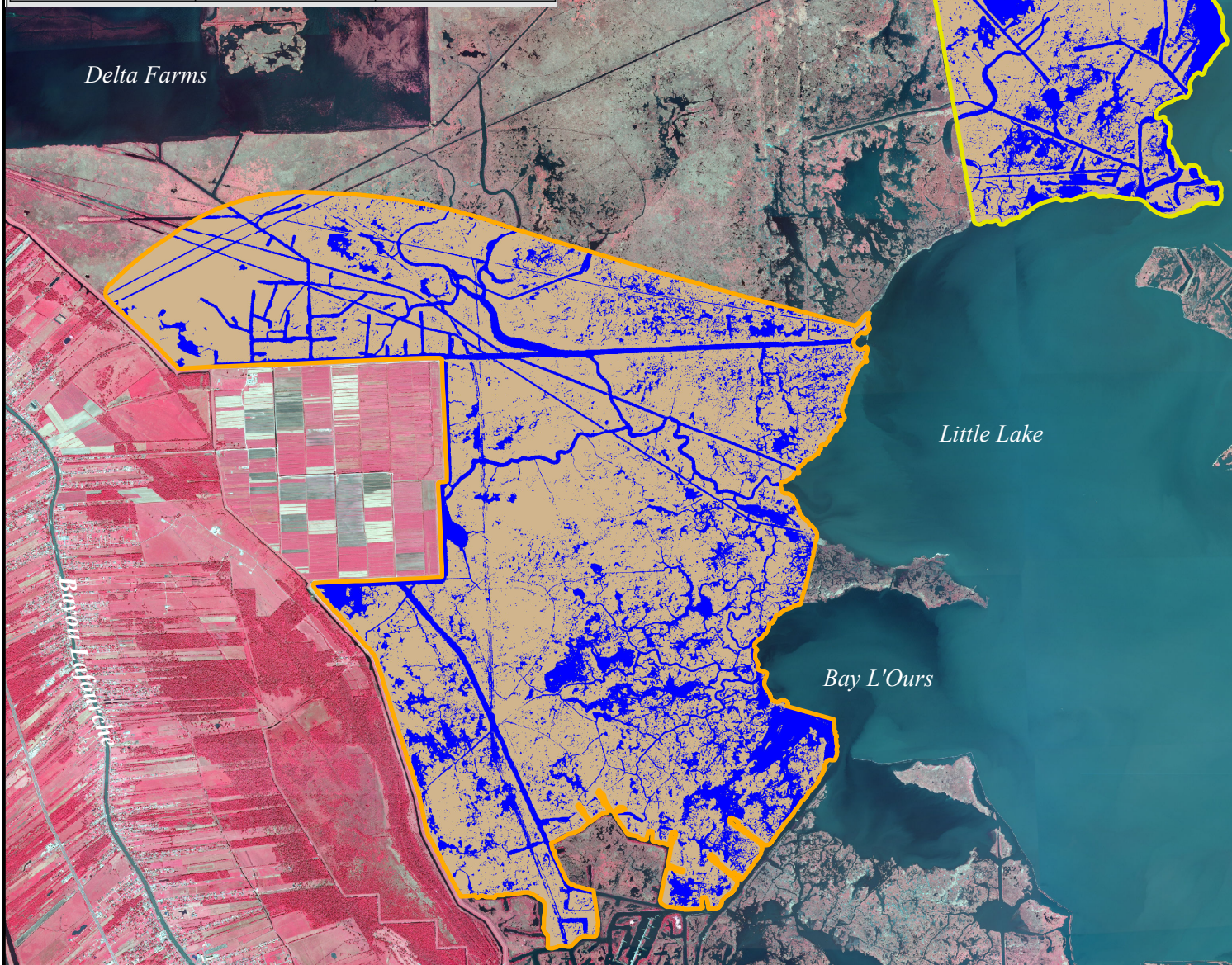


# GIWW (Gulf Intracoastal Waterway) to Clovelly Hydrologic Restoration (BA-02)

Coastal Wetlands Planning, Protection and Restoration Act  
2008 Land-Water Classification

Class	Project area (Acres)	Reference area (Acres)
Land	11,029	2,677
Water	3,807	1,308
<b>Total</b>	<b>14,836</b>	<b>3,985</b>



**Data Information:**  
The land-water data were obtained from 1 meter resolution digital orthoimagery acquired October 2008. All areas characterized by emergent vegetation, upland, wetland forest, or scrub-shrub are classified as land, while open water, mud flats, and aquatic vegetation are classified as water. The data are overlaid on 2008 aerial imagery.

Project boundary  
 Reference boundary

**Prepared by:**  
U.S. Department of the Interior  
U.S. Geological Survey  
Wetland and Aquatic Research Center  
Lafayette, Louisiana and  
Coastal Protection and Restoration Authority of Louisiana  
Thibodaux Regional Office  
Federal Sponsor: Natural Resources Conservation Service (NRCS)

Scale = 1:90,000

