

Water Area Changes in Southeastern Louisiana After Hurricanes Katrina and Rita Detected with Landsat Thematic Mapper Satellite Imagery

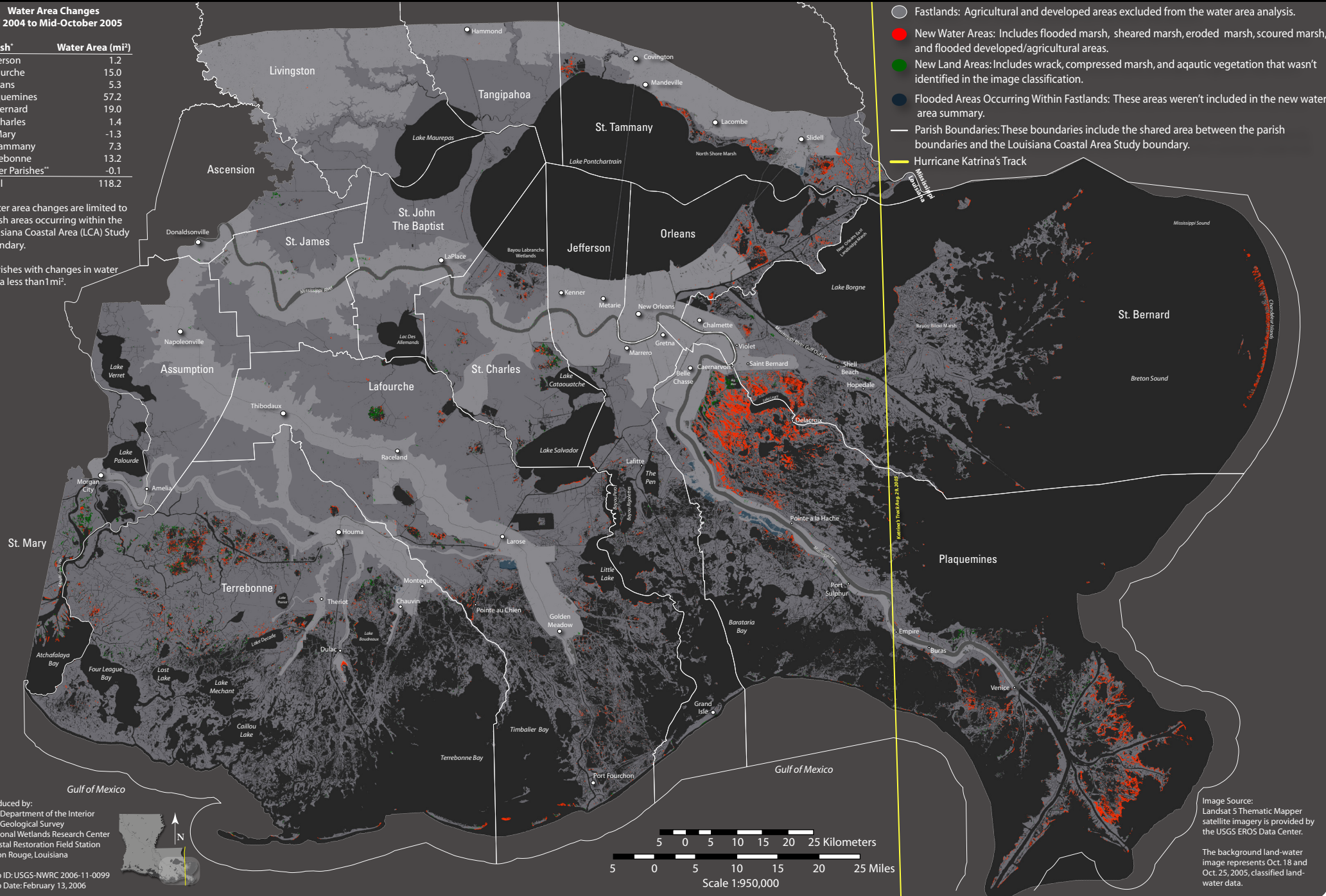
Water Area Changes
Fall 2004 to Mid-October 2005

Parish*	Water Area (mi ²)
Jefferson	1.2
Lafourche	15.0
Orleans	5.3
Plaquemines	57.2
St. Bernard	19.0
St. Charles	1.4
St. Mary	-1.3
St. Tammany	7.3
Terrebonne	13.2
Other Parishes**	-0.1
Total	118.2

*Water area changes are limited to parish areas occurring within the Louisiana Coastal Area (LCA) Study boundary.

**Parishes with changes in water area less than 1 mi².

- Fastlands: Agricultural and developed areas excluded from the water area analysis.
- New Water Areas: Includes flooded marsh, sheared marsh, eroded marsh, scoured marsh, and flooded developed/agricultural areas.
- New Land Areas: Includes wrack, compressed marsh, and aquatic vegetation that wasn't identified in the image classification.
- Flooded Areas Occurring Within Fastlands: These areas weren't included in the new water area summary.
- Parish Boundaries: These boundaries include the shared area between the parish boundaries and the Louisiana Coastal Area Study boundary.
- Hurricane Katrina's Track



Produced by:
U.S. Department of the Interior
U.S. Geological Survey
National Wetlands Research Center
Coastal Restoration Field Station
Baton Rouge, Louisiana

Map ID: USGS-NWRC 2006-11-0099
Map Date: February 13, 2006

Image Source:
Landsat 5 Thematic Mapper
satellite imagery is provided by
the USGS EROS Data Center.

The background land-water
image represents Oct. 18 and
Oct. 25, 2005, classified land-
water data.