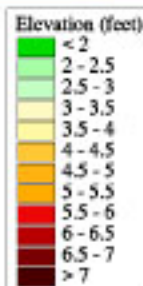
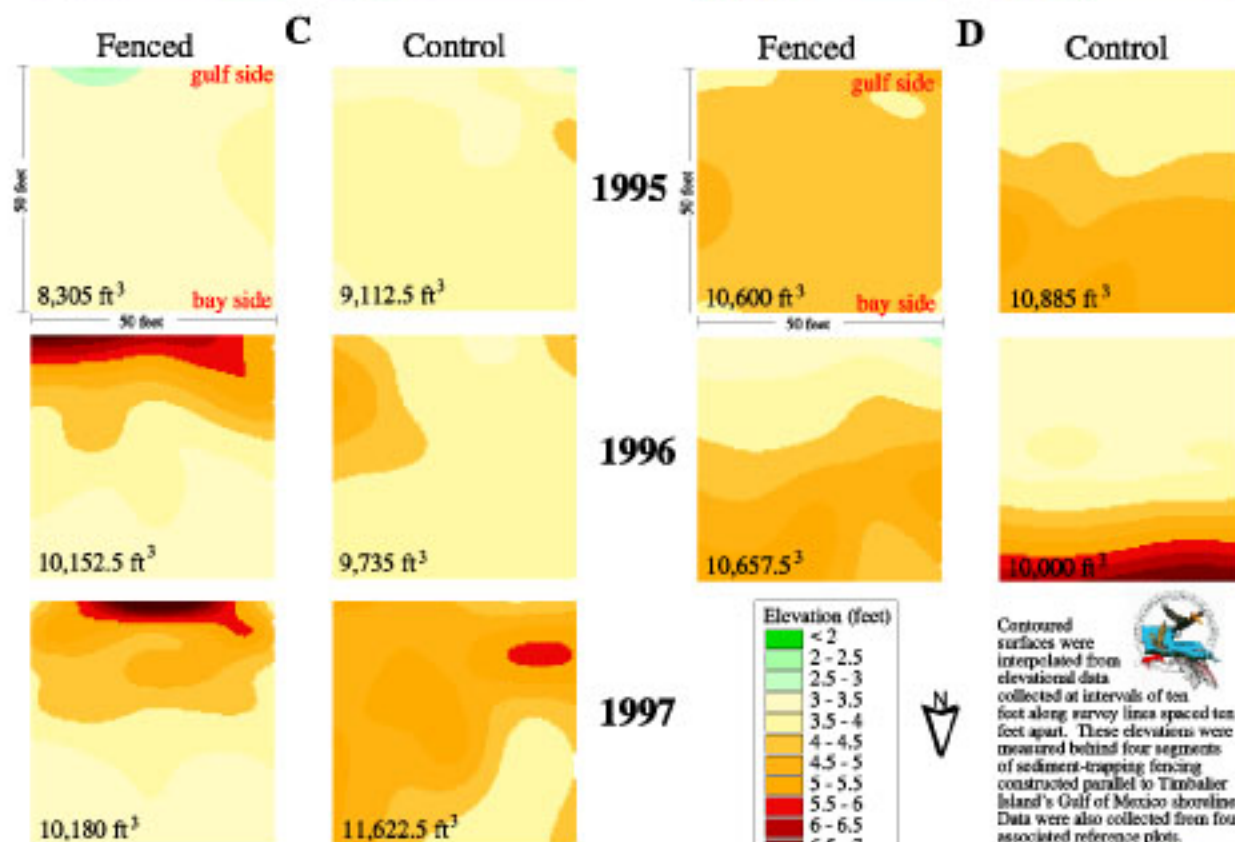
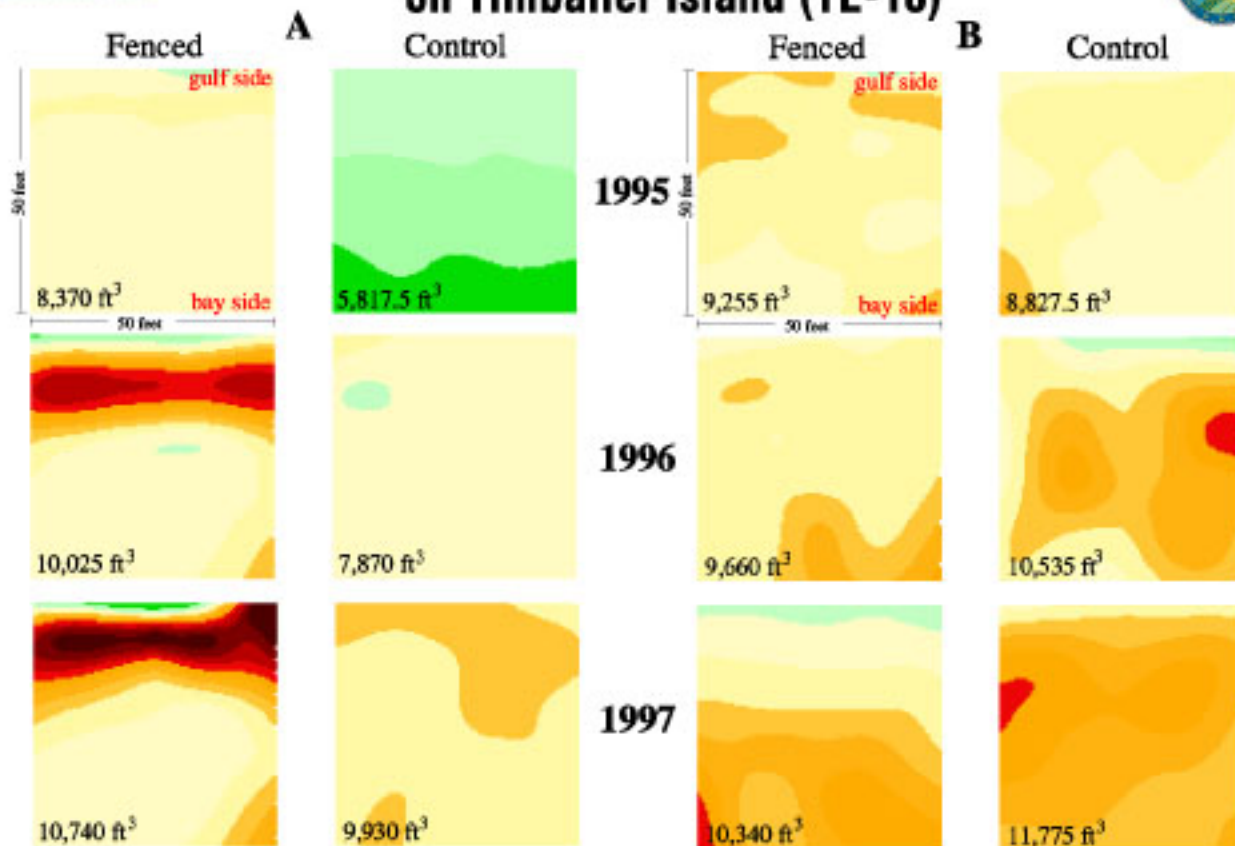


# Elevational Data on Timbalier Island (TE-18)



Contoured surfaces were interpolated from elevational data collected at intervals of ten feet along survey lines spaced ten feet apart. These elevations were measured behind four segments of sediment-trapping fencing constructed parallel to Timbalier Island's Gulf of Mexico shoreline. Data were also collected from four associated reference plots.

