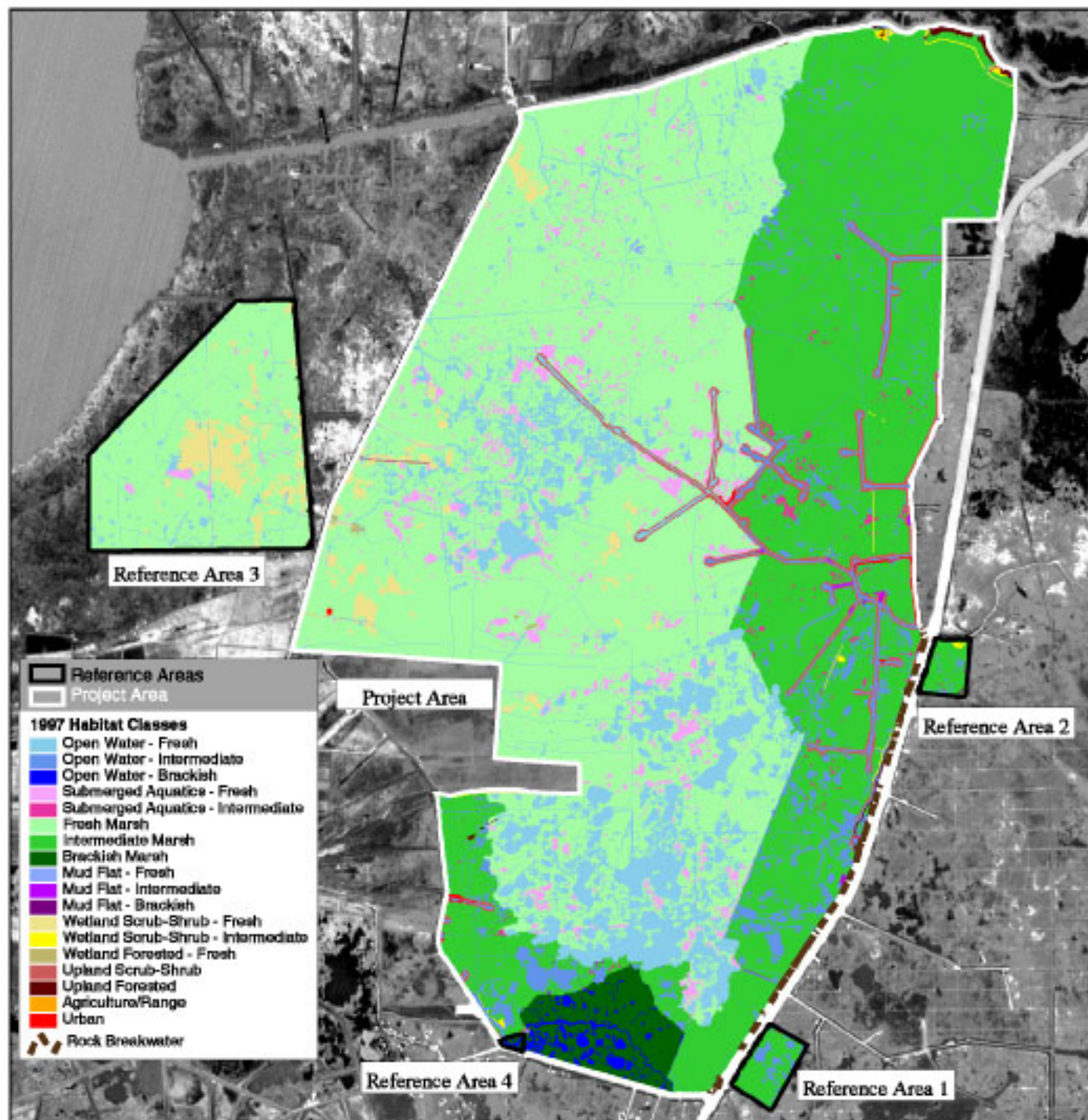


# Coastal Wetlands Planning, Protection and Restoration Act Project ME-04: Freshwater Bayou 1997 Habitat Analysis



Prepared by:  
U.S. Department of the Interior  
U.S. Geological Survey  
National Wetlands Research Center  
Lafayette, Louisiana  
and  
Louisiana Department of Natural Resources  
Coastal Restoration Division  
Abbeville, Louisiana



Habitat data were derived from 1:24,000 scale color-infrared photography. Preconstruction photography was obtained January 11, 1997. Classes are based on "Classification of Wetlands and Deepwater Habitats of the United States," Cowardin et al., 1979, as modified for the National Wetlands Inventory Mapping Conventions. The data were overlaid on a 1995 SPOT Satellite image at 1:35,000 scale.



Federal Sponsor:

