

# **PPL19 Coastwide Voting Meeting**

## **18 February 09**

### **Baton Rouge, LA**



# 1. Welcome and Introductions



Melanie L. Goodman  
P&E Subcommittee Chairman  
U. S. Army Corps of Engineers

**PPL 19 Regional Planning Team (RPT) Coast-wide Voting Meeting  
Baton Rouge, LA – February 18, 2009, 9:30 am – 12:30 pm**

**AGENDA**

**Meeting Purpose:** The Regional Planning Teams (RPTs) met on January 27th, 28th, and 29th, 2009 to accept nominations under PPL19. The CWPPRA Planning and Evaluation (P&E) Subcommittee Chairman will chair this coast-wide voting meeting. RPTs will select PPL19 nominees at this coast-wide voting meeting.

1. Welcome and Introductions (Goodman, USACE), 9:30 – 9:35 a.m.
2. Explanation of Procedures for Today's PPL19 Coast-wide Voting Meeting and Announcements (Goodman, USACE), 9:35 – 9:45 a.m.
3. Coast-wide Voting by Basin (Goodman, USACE), 9:45 a.m. – 12:30 p.m.

The RPTs will select three projects in the Terrebonne, Barataria, Breton Sound, and Pontchartrain Basins; two projects in the Teche/Vermilion, Mermentau, and Calcasieu/Sabine Basins, and one project will be selected in the Atchafalaya Basin and Mississippi River Delta Basin. Only one project was presented at the RPT Meeting for the Mississippi River Delta Basin, so an additional nominee will be selected for the Breton Sound Basin. The RPTs will also select six demonstration projects. Additional projects may not be nominated at this meeting, nor will any significant changes to projects proposed at the January RPT meetings be allowed. Additional public comments will not be accepted at this meeting (public comment was solicited at the January RPT meetings and additional written comment was to be forwarded to the P&E Subcommittee Chairman by February 13, 2009 for dissemination to the CWPPRA agencies).

**Region 1 – Pontchartrain Basin**

**Region 2 – Breton Sound Basin**

**Region 2 – Mississippi River Delta Basin**

**Region 2 – Barataria Basin**

**Region 3 – Terrebonne Basin**

**Region 3 – Atchafalaya Basin**

**Region 3 – Teche-Vermilion Basin**

**Region 4 – Mermentau Basin**

**Region 4 – Calcasieu-Sabine Basin**

**Coastwide Demonstration Projects**

4. Adjourn (Goodman, USACE), 12:30 p.m.

## 2. Explanation of Procedures / Announcements



# **Explanation of Procedures-General**

- Initial Regional Planning Team (RPT) meetings took place Jan. 27-29, 2009 to accept project nominations under PPL19
- This coast-wide voting meeting is being held to conduct voting by basin, when necessary, with the end result being a list of 20 nominees and 6 demos for PPL19
- The Technical Committee will meet on April 15, 2009 in New Orleans, La to select 10 candidates and up to 3 demos for further evaluation under PPL19
- PPL19 Phase I selection will take place on December 2, 2009
- The PPL19 process is provided as a handout

# Explanation of Procedures-Ground Rules

- At this coastwide meeting, we will choose two PPL19 nominees per basin (except for three nominees in Barataria, Terrebonne, Breton Sound, and Pontchartrain Basins, and one in the Atchafalaya Basin) and six demonstration projects
- Additional projects may not be nominated at this meeting, nor will any significant changes to projects proposed in January be allowed at this meeting
- Additional public comment will not be accepted at this meeting (public comment was solicited at the Jan RPT meetings and additional written comments provided to the P&E Subcommittee Chairman were disseminated to the CWPPRA agencies)

## **Explanation of Procedures-Ground Rules**

- Selection of projects will be by consensus, if possible
- If voting is required, each officially designated parish representative in the basin and each Federal agency and the State will have one vote
- Eligible voters in each basin will be given a specific number of votes (matching the number of competing projects in that basin)
- Eligible voters are to award their highest ranking nominee the highest number of points in each basin, the next highest one less, and so on, with the lowest ranking project receiving one point (voters must assign a point score to all projects)
- The voting process will be a ranked vote (highest number of points used to rank projects within a basin)

# Explanation of Procedures-Ground Rules

- Paper ballots will be handed out to each designated voter in each basin
- The point scores for all projects within a basin will be totaled to determine project rankings
- The two nominees per basin ranked highest (except for three nominees ranked highest in Barataria, Terrebonne, Breton Sound, and Pontchartrain Basins, and one ranked highest in the Atchafalaya Basin) will be selected and reported to the Technical Committee for their selection of ten PPL19 candidate projects on April 15, 2009 in New Orleans, La.
- The six demonstration projects ranked highest will be selected and reported to the Technical Committee for their selection of up to three PPL19 demonstration candidate projects on April 15, 2009 in New Orleans, La.



# Explanation of Procedures-Voting Eligibility

PPL 19	Parish Eligibility to Vote in Basins										Designated Voting Representative
Parish	R1-Pontchartrain	R2-Mississippi Riv Delta	R2-Breton Sound	R2-Barataria	R3-Terrebonne	R3-Atchafalaya	R3-Teche-Vermilion	R4-Calcasieu-Sabine	R4-Mermentau	Demonstration Projects (coastwide)	
Ascension	X			X						X	
Assumption				X	X					X	
Calcasieu								X		X	David Richard
Cameron								X	X	X	Ryan Bourriague
Iberia					X	X	X			X	
Jefferson	X			X						X	Marnie Winter, Director, Jefferson Parish
Lafourche				X	X					X	Nicholas Matherne, Lafourche Parish Permit Coordinator
Livingston	X									X	Al Coburn
Orleans	X			X						X	Wynecta Fisher, Deputy Director of Environmental Affairs, City of New Orleans
Plaquemines	X	X	X	X						X	P.J. Hahn, Director of Coastal Zone Management
St. Bernard	X		X							X	William McCartney
St. Charles	X			X						X	Earl Matherne
St. James	X			X						X	Jody Chenier, St. James Parish Director Of Operations
St. John	X			X						X	
St. Martin					X					X	
St. Mary					X	X	X			X	Paul P. Naquin, Jr.
St. Tammany	X									X	Brian Fortson
Tangipahoa	X									X	
Terrebonne					X	X				X	Leslie Suazo, Director, Coastal Restoration & Preservation, Terrebonne Parish
Vermilion							X		X	X	W.P. Edwards III, Vermilion Parish CRAC

Parishes Voting on Feb 18 2009

# Announcements of Upcoming Meetings



Technical Committee Mtg, Wednesday, 15 Apr 09, New Orleans at 9:30 a.m.  
Selection of 10 **PPL19** candidates and up to 3 demos

Task Force Mtg, Wednesday, 3 Jun 09, Lafayette at 9:30 a.m.

Technical Committee Mtg, Wednesday, 9 Sep 09, Baton Rouge at 9:30 a.m.  
O&M and Monitoring funding recommendations

Task Force Mtg, Wednesday, 14 Oct 09, Baton Rouge at 9:30 a.m.  
O&M and Monitoring funding approvals; announce **PPL19** public meetings

## **PPL19** Public Meetings

Tuesday, 17 Nov 09, Abbeville at 7:00 p.m.

Wednesday, 18 Nov 09, New Orleans at 7:00 p.m.

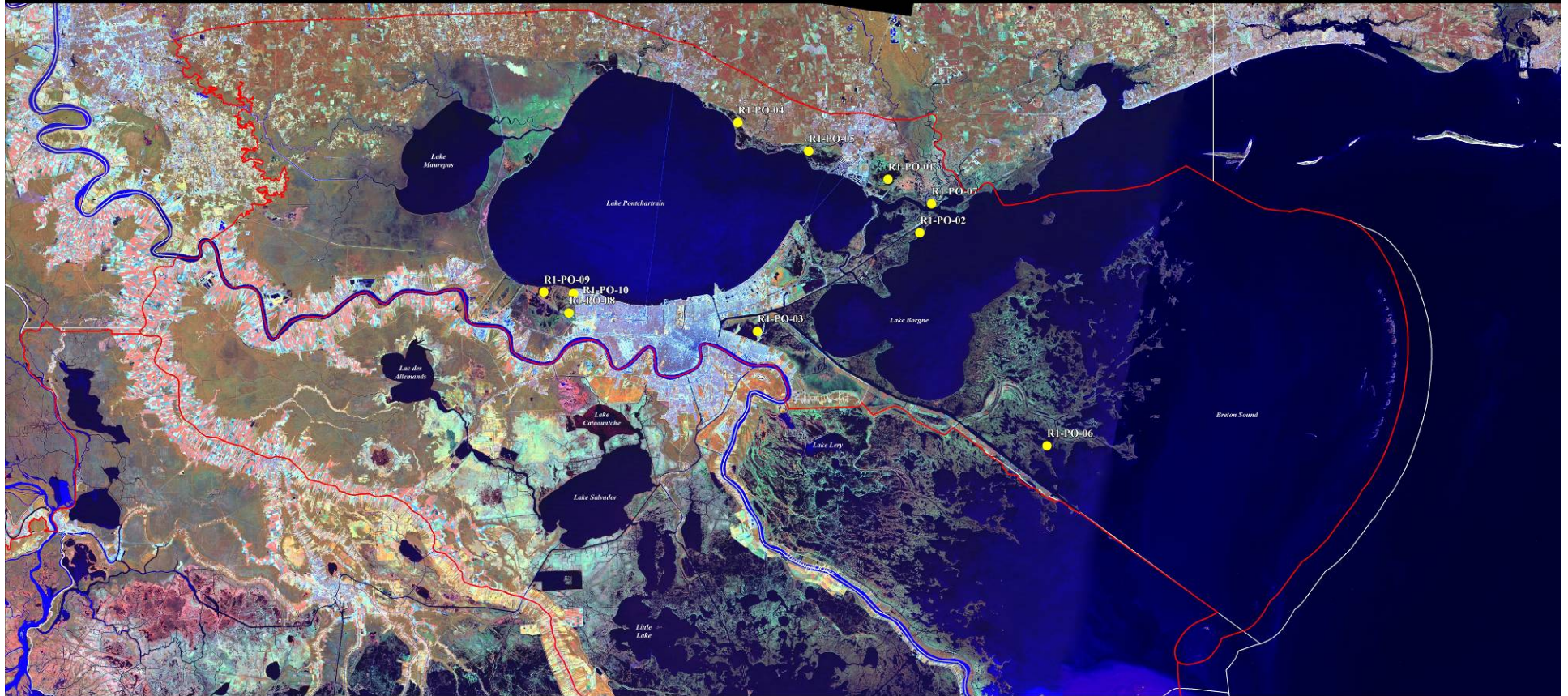
Technical Committee Mtg, Wednesday, 2 Dec 09, Baton Rouge at 9:30 a.m.  
Recommendation of up to 4 **PPL19** projects and one credible 1 demo and Phase II approvals

Task Force Mtg, Wednesday, 20 Jan 10, New Orleans at 9:30 a.m.  
Final selection of **PPL19** projects and approve Phase II requests

# 3. Coastwide Voting by Basin



# Region 1 PPL19 Proposed Projects



## ● Pontchartrain Basin Project

- R1-PO-01 Fritchie Marsh-Northshore Marsh Creation and Terracing Project
- R1-PO-02 Seven Lagoons/ GIWW Marsh Creation, Shoreline Protection and Terracing
- R1-PO-03 Bayou Bienvenue Restoration
- R1-PO-04 North Shore Marsh Restoration Project
- R1-PO-05 Bayou Bonfouca Marsh Creation
- R1-PO-06 Eloi Bay Oyster Reefs
- R1-PO-07 Big Branch Cypress Plantings
- R1-PO-08 Kenner Wetland Assimilation
- R1-PO-09 LaBranche East Marsh Creation Habitat Enhancement
- R1-PO-10 Barataria and Terrebonne Basins Stormwater Redirection

Region 1 PPL19  
Regional Planning Team Meeting  
February 18, 2009  
Background Image:  
2006 Landsat Thematic Mapper 5 Mosaic  
Band Combination 4, 5, 3



## Region 1 - PONTCHARTRAIN BASIN

[illegible]

Region 2 PPL19  
Regional Planning Team Meeting  
February 18, 2009  
Background Image:  
2006 Landsat Thematic Mapper 5 Mosaic  
Band Combination 4, 5, 3

4 0 4 8  
Kilometers  
4 0 4 8  
Miles

R2-BA-01	Home Place Siphon
R2-BA-02	Bayou Dupont Sediment Delivery – Marsh Creation 3
R2-BA-03	West Pointe a la Hache
R2-BA-04	Bayou L'Ours Ridge Restoration
R2-BA-05	and Terracing Naomi Siphon Improvement
R2-BA-06	Bayou Dupont to Bayou Barataria Marsh Creation
R2-BA-07	Home Place Marsh Creation
R2-BA-08	Bayou Villars Shoreline Stabilization Project
R2-BA-09	Chienr Ronquille Barrier Shoreline Restoration and Marsh Creation
R2-BA-10	Barataria and Terrebonne Basins Stormwater Redirection
R2-BA-11	Bayou Grande Cheniere Marsh Creation

R2-BS-01 Monsecour Siphon  
R2-BS-02 Dedicated Sediment Delivery  
and Water Conveyance for  
Marsh Creation West of Big Mar  
R2-BS-03 Breton Marsh Restoration

## R2-MR-01 Pass a Loutre Restoration

Region 2 PPL19  
Regional Planning Team Meeting  
February 18, 2009  
Background Image:  
2006 Landsat Thematic Mapper 5 Mosaic  
Band Combination 4, 5, 3



## Region 2 - Breton Sound Basin

[illegible]

**Region 2 - MISSISSIPPI RIVER DELTA BASIN**

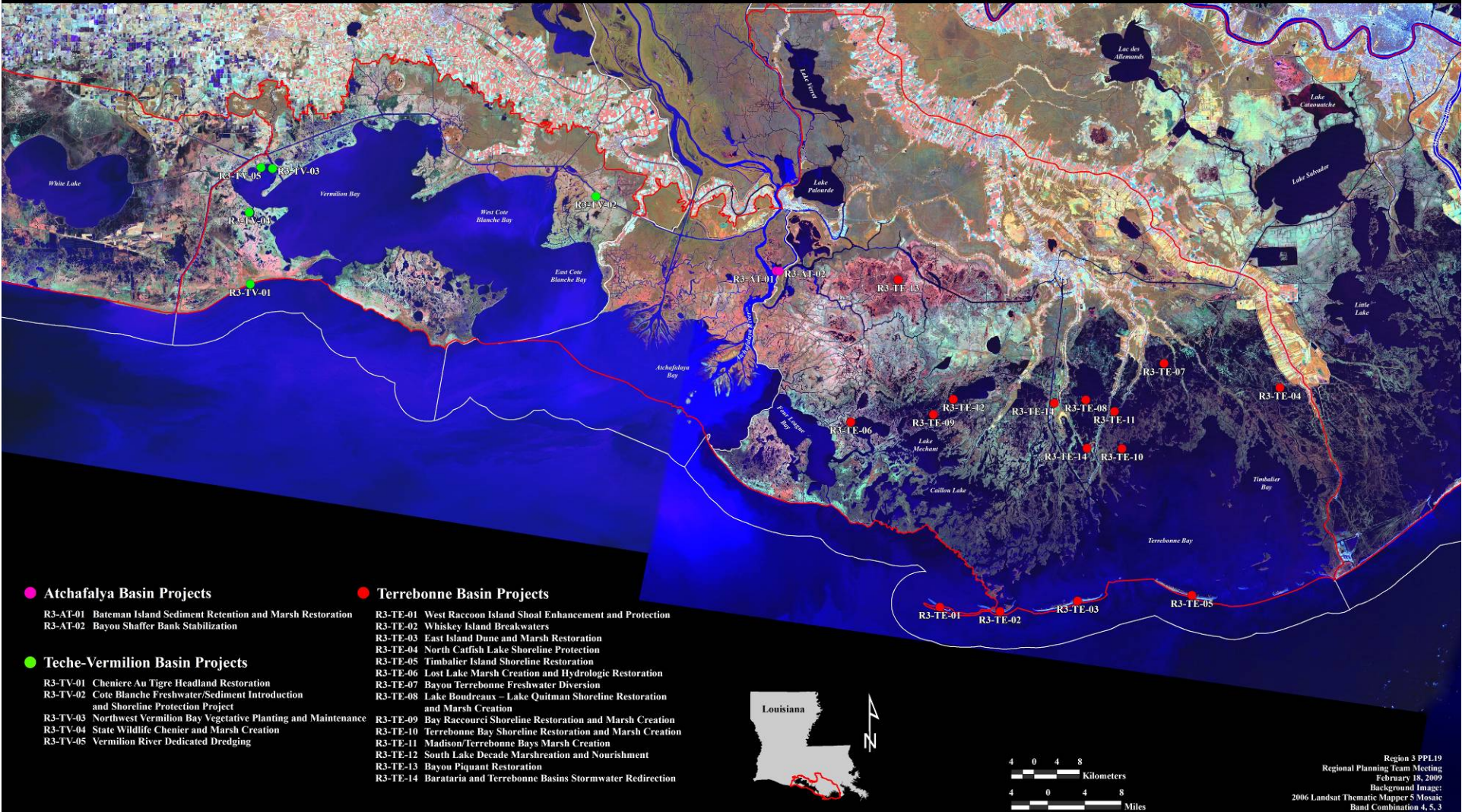
Project Proposal Number	Project Proposals	USACE	NRCS	NMFS	FWS	EPA	LA-OCPR	Plaquemines	Total Score
R2-MR-01	Pass a Loutre Restoration Project								0
		0	0	0	0	0	0	0	



## Region 2 - BARATARIA BASIN

[illegible]

### Region 3 PPL19 Proposed Projects



## Region 3 - TERREBONNE BASIN

[illegible]

## Region 3 - ATCHAFALAYA BASIN

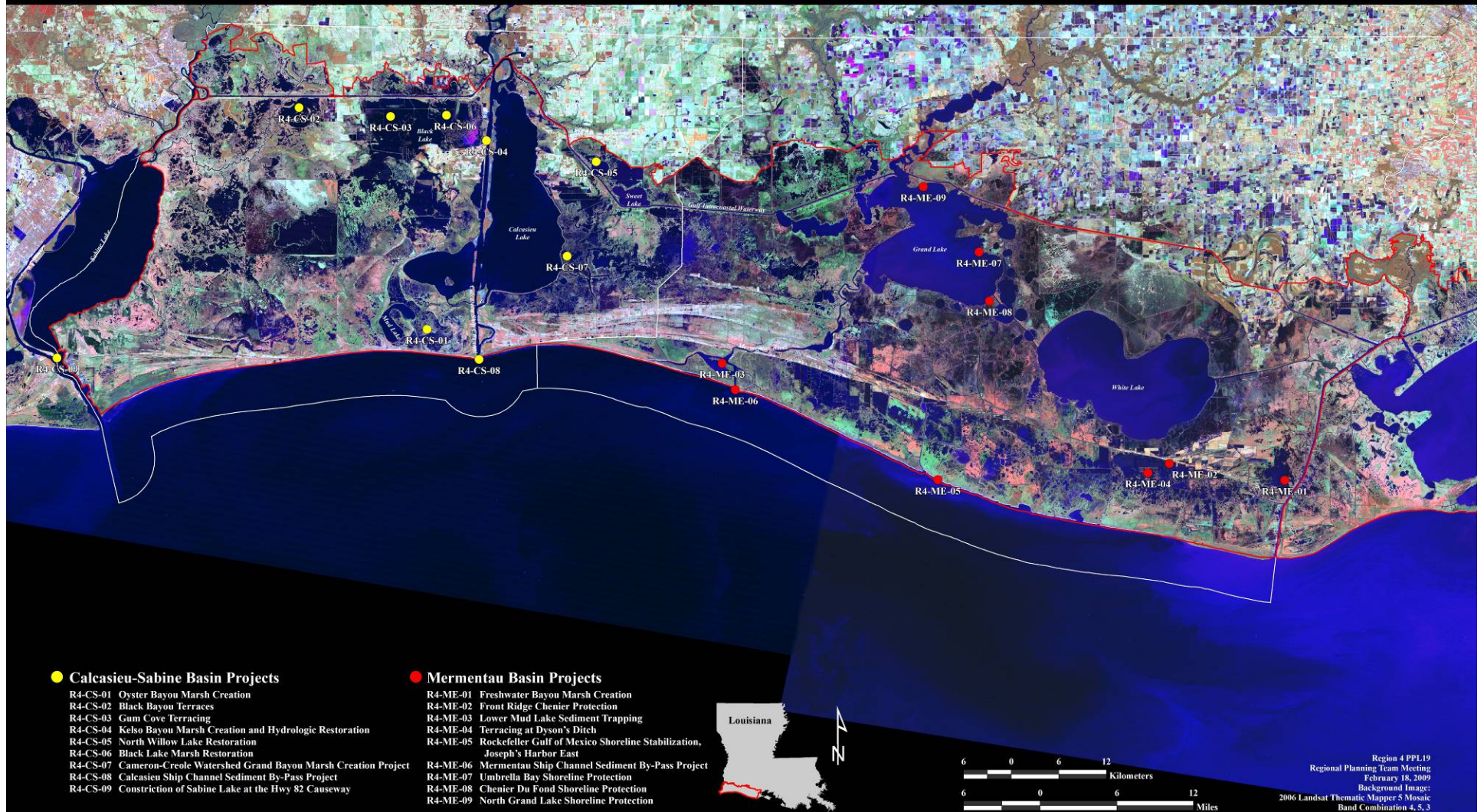
[illegible]

## Region 3 - TECHE-VERMILION BASIN

[illegible]



## Region 4 PPL19 Proposed Projects



## Region 4 - MERMENAU BASIN

[illegible]

## Region 4 - CALCASIEU-SABINE BASIN

[illegible]



## Coastwide DEMONSTRATION PROJECTS

	Project Proposal
Demo-01	Rapidly Deployable Pre-cast Sediment Retention Barrier
Demo-03	Ecosystems Wave Attenuator for Shoreline Protection
Demo-04	Bayou Backer Demo
Demo-05	Floating Island Environmental Solutions BioHaven©
Demo-06	Viperwall Demo
<del>Demo-02</del>	<del>Establishing Sediment Vegetation Ribbons to Enhance Dredged Sediment Retention and Reduce Storm Surge</del>
<del>Demo-07</del>	<del>Free-Flow Power Hydrokinetic Electricity Generation Improvements</del>
<del>Demo-08</del>	<del>Polders for Marshland Creation</del>

# 4. Adjourn

