



# LaBranche East Marsh Creation (PO-75)

## Project Status

**Approved Date:** 2010      **Project Area:** 931 acres  
**Approved Funds:** \$54.3 M      **Total Est. Cost:** \$55.3 M  
**Net Benefit After 20 Years:** 715 acres  
**Status:** Engineering and Design  
**Project Type:** Marsh Creation  
**PPL #:** 19

## Location

The LaBranche East Marsh Creation Project (PO-75) is the combination of 2 CWPPRA projects. The LaBranche Central Marsh Creation Project (PO-133) was combined with the original PO-75 for construction purposes. The project area consists of 3 marsh creation cells. Cell 3, the original "PO-75 project" is located between Lake Pontchartrain and I-10 in St. Charles Parish, Louisiana. It is bounded on the west by the Fall Canal and the Bayou LaBranche Wetland Creation Project (PO-17) and the east by a pipeline canal. Marsh creation cells 1 and 2 (PO-133) are located immediately to the south of the Illinois Central Railroad (IC). Cells 1 and 2 are bounded to the north by the railroad running parallel to I-10, to the west by the marsh fringe just east of Bayou LaBranche, to the south by Bayou Traverse and to the east by marsh fringe west of a pipeline canal.

## Problems

Dredging of access/flotation canals for construction of I-10 resulted in increased salinity & altered hydrology that exacerbated conversion of emergent wetland vegetation into shallow open water bodies. Land loss is estimated to be -0.543 percent/year based on USGS data from 1984 to 2011 within the extended project boundary.



A vulnerable Interstate 10 runs through a section of deteriorated LaBranche Wetlands. Restoration of this wetland resource will be a visible reminder of our efforts to save Louisiana's coast.

## Restoration Strategy

The primary goal is to restore marsh that converted to shallow open water. Project implementation will result in an increase of fisheries and wildlife habitat acreage, and diversity along with improving water quality. The proposed project would provide a protective wetland buffer to the railroad and I-10, the region's primary westward hurricane evacuation route, and complement hurricane protection measures in the area.

PO-75 will create 1417 acres of marsh and nourish about 148 acres of existing marsh using dedicated dredging from Lake Pontchartrain. The target elevation of the marsh creation cells is the same as average healthy marsh adjacent to the project area. The creation cells will be fully-contained.

## Progress to Date

This project is on Priority Project List 19. Surveying and Geotechnical scopes of work and plans are prepared. The project was approved for Phase II authorization and approval of Phase II increment I funding in January 2020.

The project is on Priority Project List (PPL) 19.

*For more information, please contact:*








**Federal Sponsor:**  
 Natural Resources Conservation Service  
 Alexandria, LA  
 (318) 473-775

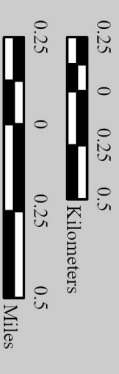
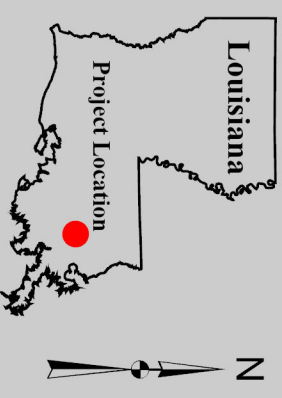


**Local Sponsor:**  
 Coastal Protection and Restoration Authority  
 Baton Rouge, LA  
 (225) 342-4736



# LaBranche East Marsh Creation (PO-75)

-  Tidal Creek \*
  -  Pond \*
  -  Marsh Creation \*
  -  Borrow Site \*
  -  Project Boundary
- \*denotes proposed features



Map Produced by:  
U.S. Department of the Interior  
U.S. Geological Survey  
Wetland and Aquatic Research Center  
Baton Rouge, La.

Background Imagery:  
2021 NAIP Photography

Map Date: September 26, 2023  
Map ID: USGS-NWRC 2023-11-0031  
Data accurate as of: September 26, 2023

