

Whiskey Island Back Barrier Marsh Creation (TE-50)

Project Status

Approved Date: 2004 **Project Area:** 1,038 acres

Approved Funds: \$26.1 M **Total Est. Cost:** \$26.2 M

Net Benefit After 20 Years: 272 acres

Status: Completed

Project Type: Barrier Island Restoration and Marsh Creation

PPL #: 13

Location

Whiskey Island, one of five islands that make up the Isles Dernieres barrier island chain, is located 18 miles southwest of Cocodrie in Terrebonne Parish, Louisiana. The island is surrounded by Coupe Colin to the west, Whiskey Pass to the east, Lake Pelto, Caillou Boca, and Caillou Bay to the north, and the Gulf of Mexico to the south.

Problems

Gulfside and bayside erosion has resulted in the narrowing of Whiskey Island (and the entire Isles Dernieres chain) as the two shorelines migrate toward each other, resulting in a 68 percent decrease in average width for the Isles Dernieres. Within 100 years, the entire subaerial portion of the Isles Dernieres barrier island system is expected to disappear except for small land fragments associated with the western end of Whiskey Island and the eastern end of East Island. However, some estimates project the Isles Dernieres will disappear much earlier. Other predictions suggest that, without restoration, Whiskey Island could become a subaqueous sand shoal by 2019. Another CWPPRA restoration project, Whiskey Island Restoration (TE-27), which included placement of dredge material, vegetative planting, and sand fencing, was completed in 2000.

Restoration Strategy

The goal of the TE-50 project is to increase the longevity of the previously restored and natural portions of the island by increasing the island's width. Increasing the island's width will help to retain sand volume and elevation. Approximately 319 acres of back barrier intertidal marsh habitat, 5,865 linear feet of tidal creeks, three 1-acre tidal ponds and 13,000 linear feet of protective sand dune were created by semiconfined disposal and placement of dredged material. The sediment was dredged from a sediment source in the Gulf of Mexico near the island. The area was planted with native marsh vegetation to colonize and protect the newly-placed marsh soil.



Post construction photo of project area.

Progress to Date

The CWPPRA Task Force approved funding for construction (phase 2) at the February 13, 2008 Task Force meeting. Construction began in March 2009 and initial construction was completed in November 2009. Vegetative plantings were installed at the project site in June of 2010 and October 2011.

This project is on Project Priority List 13.

For more project information, please contact:



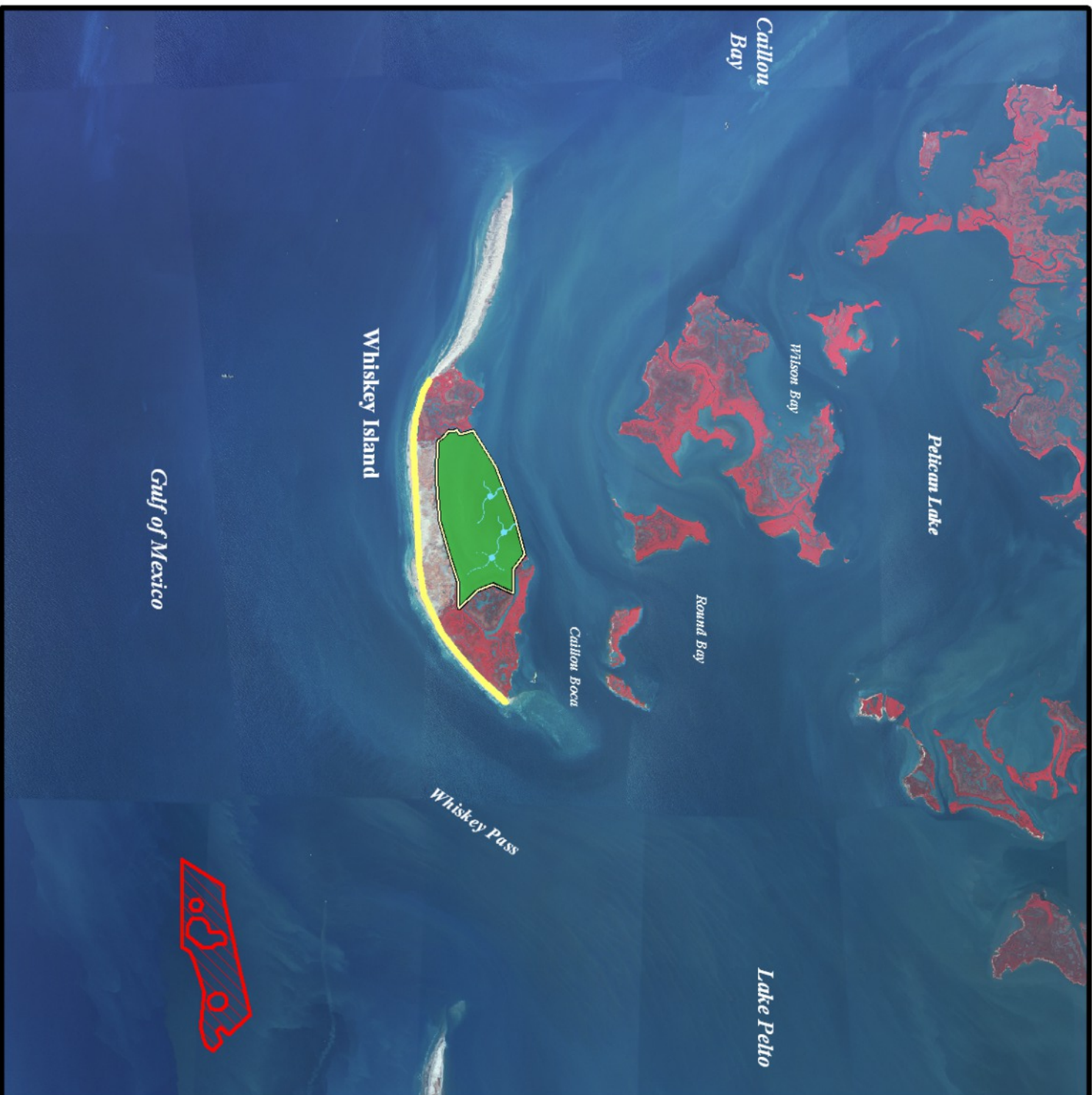
Federal Sponsor:

U.S. Environmental Protection Agency
Dallas, TX
(214) 665-7255

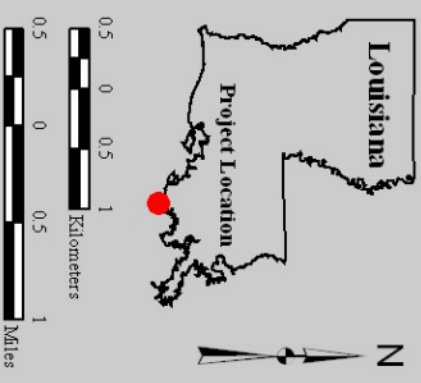
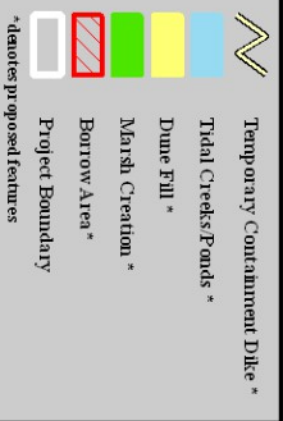


Local Sponsor:

Coastal Protection and Restoration Authority
Baton Rouge, LA
(225) 342-4736



Whiskey Island Back Barrier Marsh Creation (TE-50)



Map Produced by:
U.S. Department of the Interior
U.S. Geological Survey
National Wetlands Research Center
Coastal Restoration Field Station
Baton Rouge, La.

Background Imagery:
2005 Digital Orthophoto Quarter Quadangle
Map Date: November 26, 2007
Map ID: USGS-NWRC 2008-11-0067
Data accurate as of: November 26, 2007