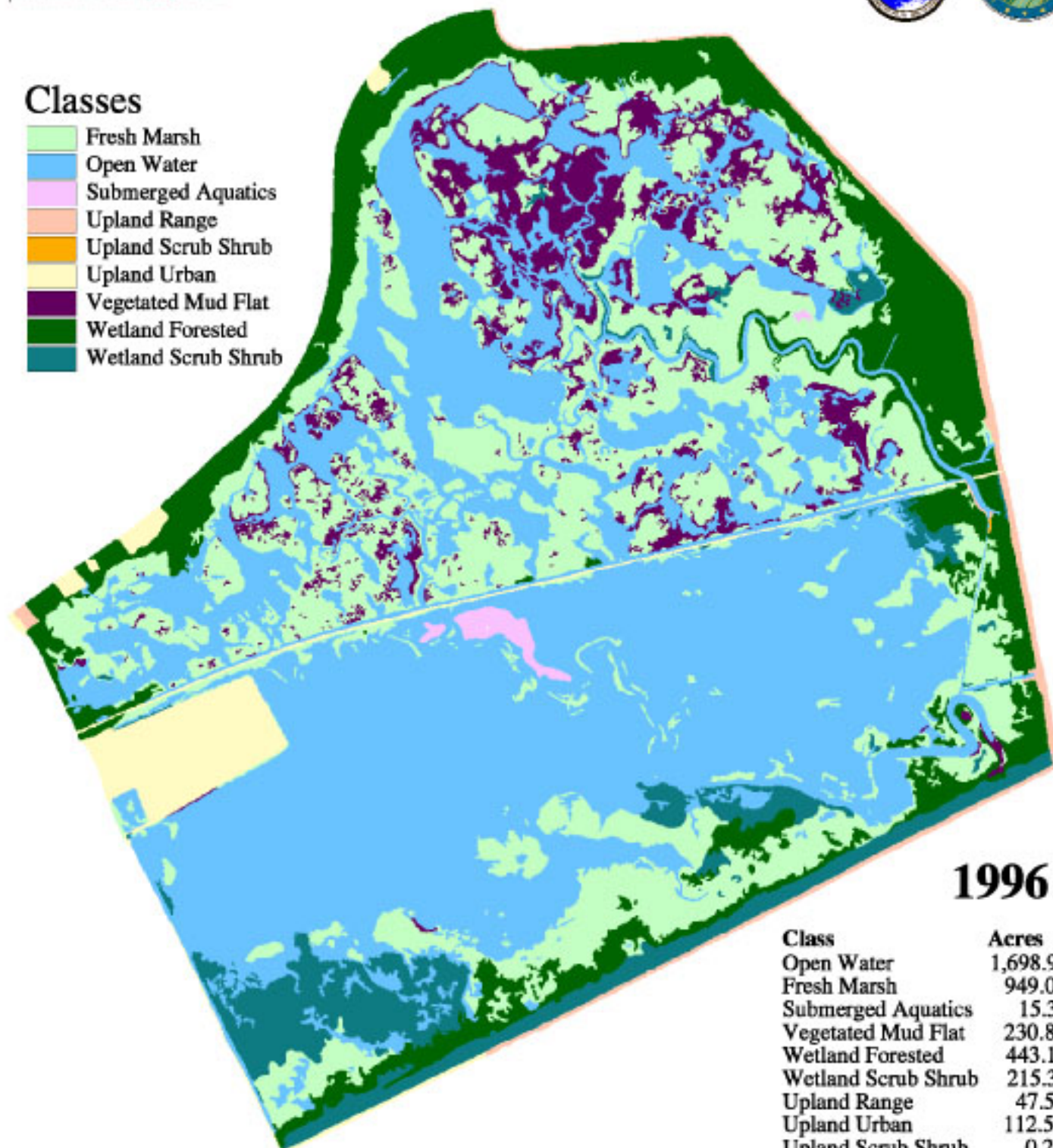


## Classes

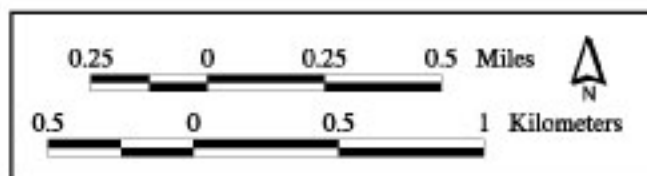


## 1996

Class	Acres
Open Water	1,698.9
Fresh Marsh	949.0
Submerged Aquatics	15.3
Vegetated Mud Flat	230.8
Wetland Forested	443.1
Wetland Scrub Shrub	215.3
Upland Range	47.5
Upland Urban	112.5
Upland Scrub Shrub	0.2

U.S. Department of the Interior  
U.S. Geological Survey  
National Wetlands Research Center  
Lafayette, Louisiana

Federal Sponsor:  
U.S. Department of the Interior  
U.S. Fish and Wildlife Service



LA Department of Natural Resources  
Coastal Restoration Division  
New Orleans Field Office

Map ID: 99-2-011

Habitat data were derived from 1:12,000 scale color-infrared photography. Postconstruction photography was obtained December 20, 1996. Classes are based on "Classification of Wetlands and Deepwater Habitats of the United States," Cowardin et. al. 1979, as modified for National Wetland Inventory Mapping Conventions.