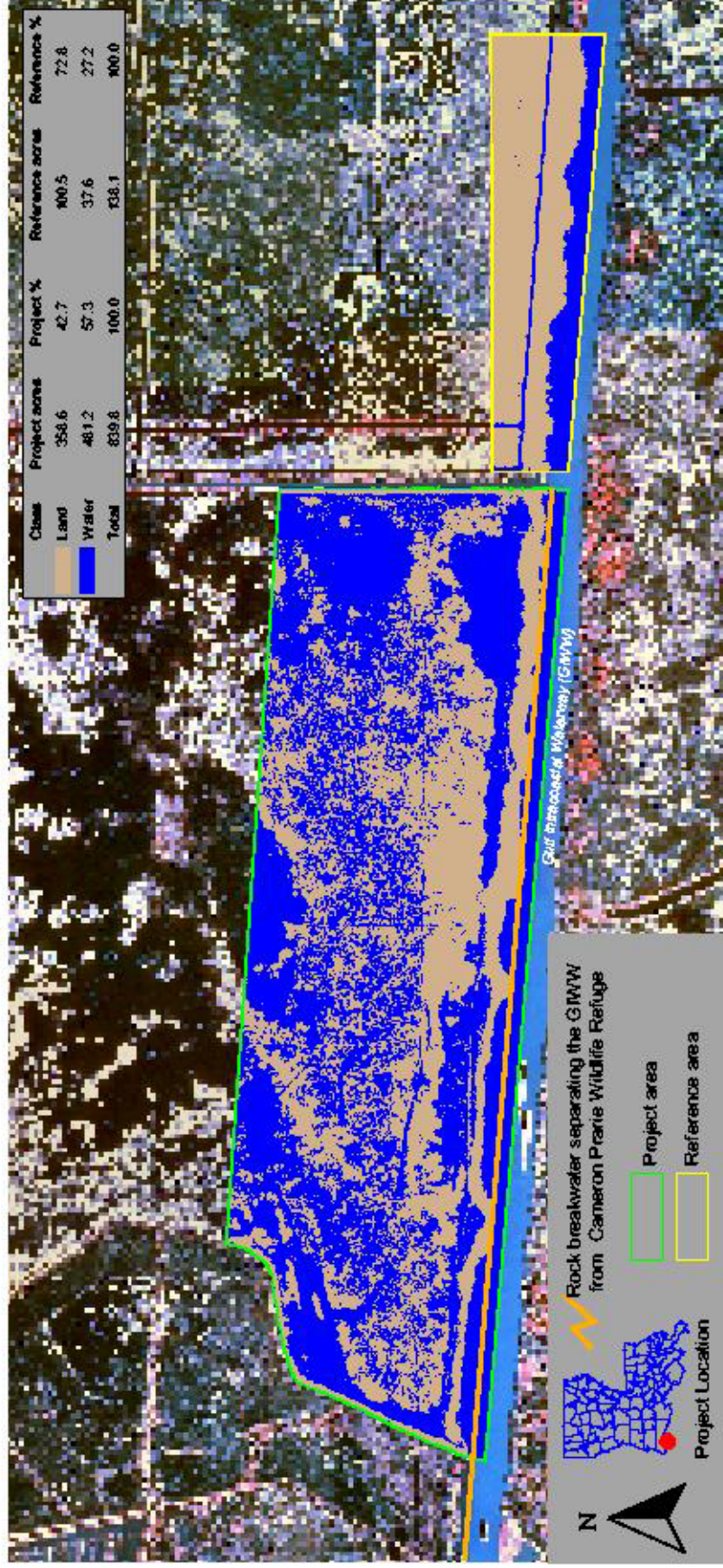




1997 Land-Water Analysis



Prepared by:
U.S. Department of the Interior
U.S. Geological Survey
National Wetlands Research Center
Lafayette, Louisiana
and
Louisiana Department of Natural Resources
Coastal Restoration Division
Abbeville Field Office

Land-water data were obtained from 1:12,000 scale color-infrared photography on January 11, 1997 (shown here at 1:25,000) after construction of a 13,200 ft (94,023m) rock breakwater to separate the GIWW from Cameron Prairie Wildlife Refuge. Construction began January 31, 1984 and ended August 3, 1994.

Federal Sponsor:
U.S. Fish and Wildlife Service

