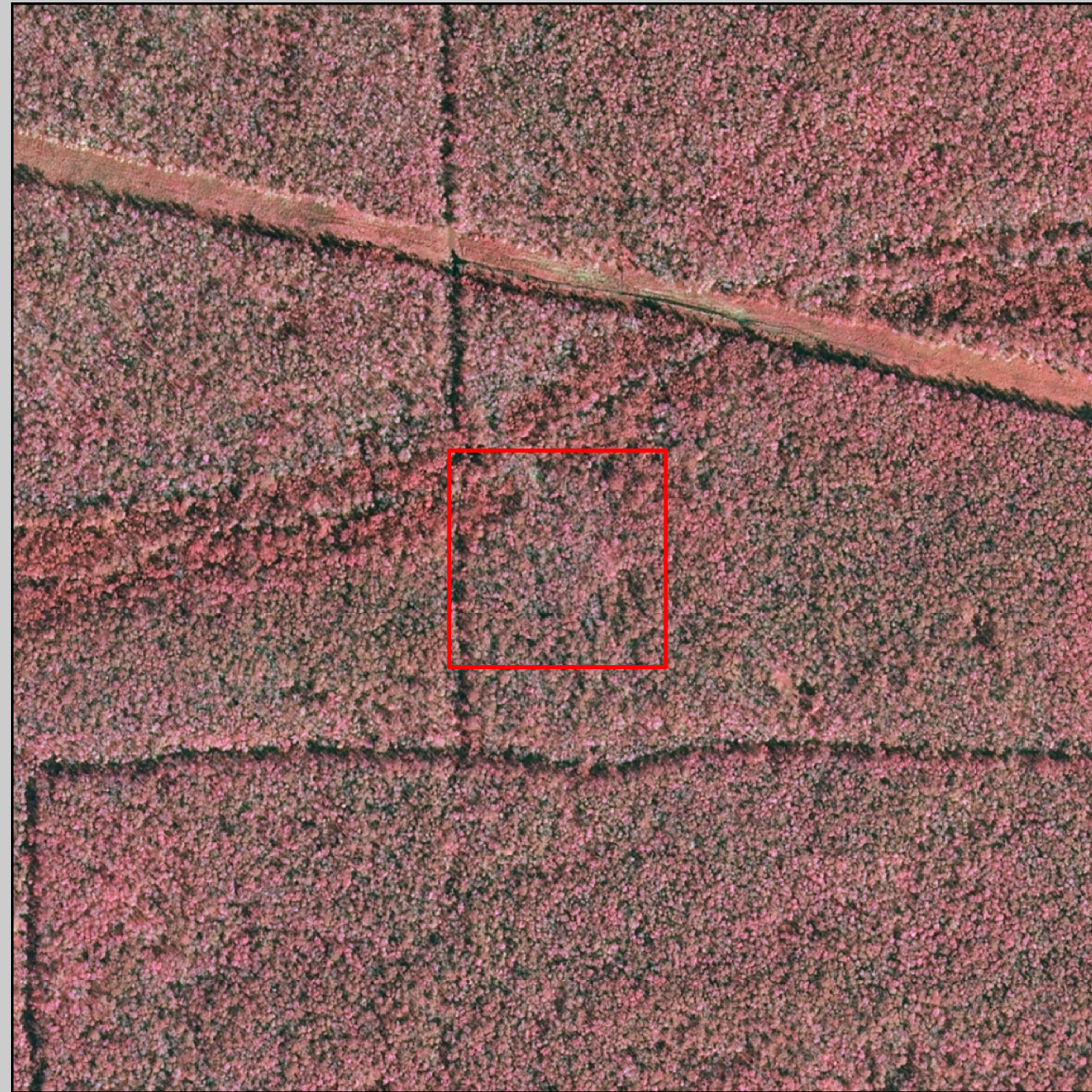
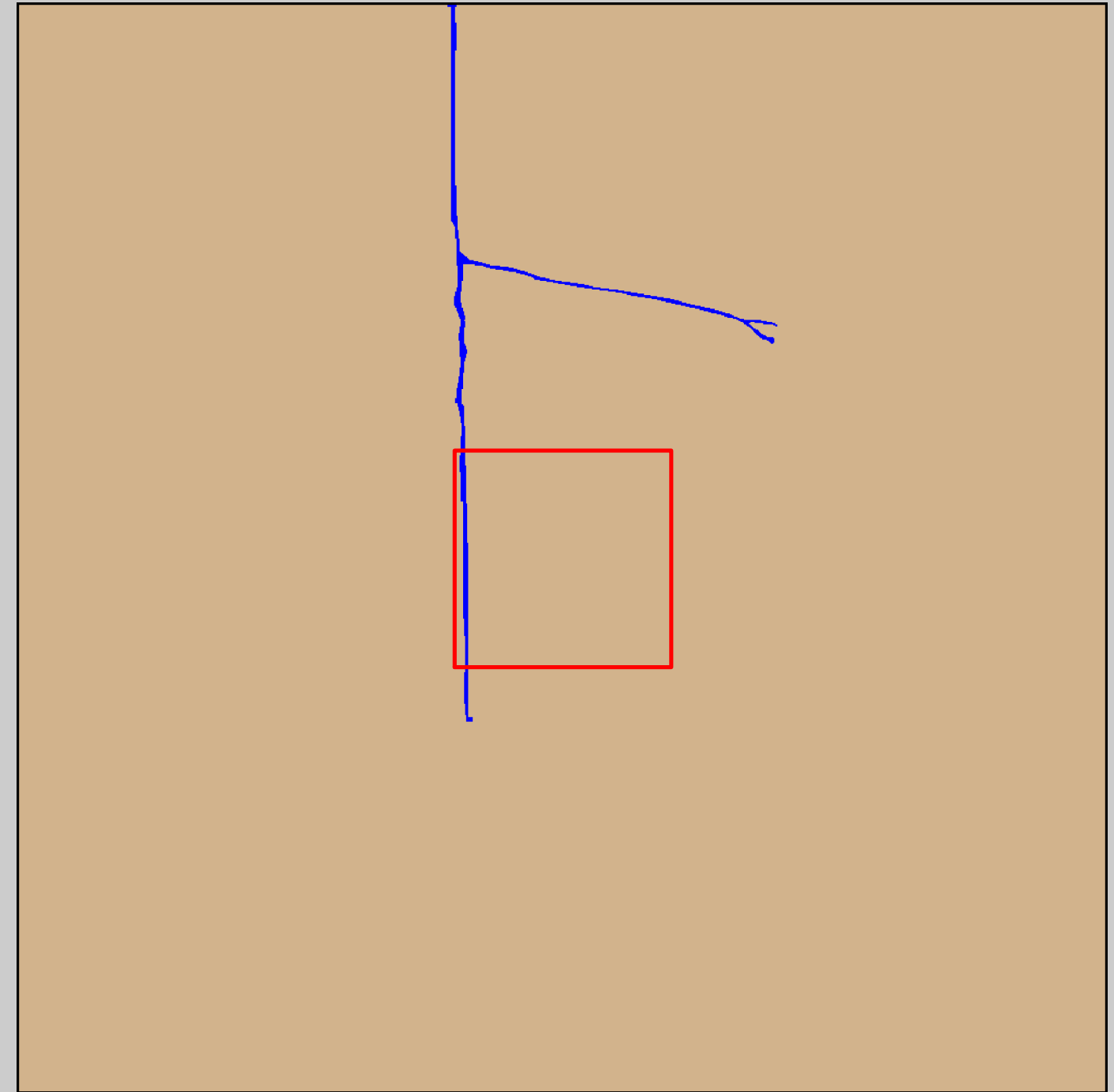


2005 Digital Image

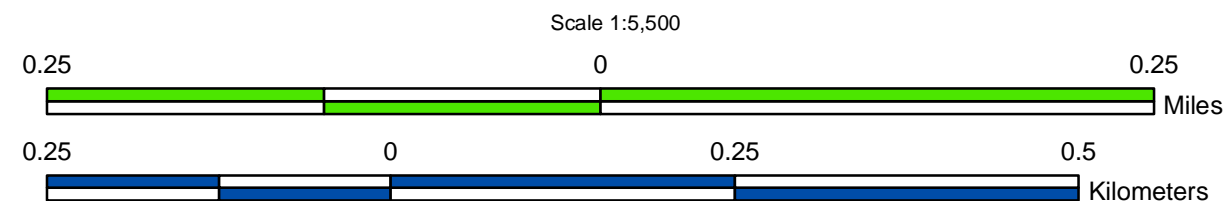


2005 Land-Water Analysis



Prepared by:
 U.S. Department of the Interior
 U.S. Geological Survey
 National Wetlands Research Center
 Lafayette, Louisiana
 Prepared for:
 Louisiana Department of Natural Resources
 Coastal Restoration Division
 Thibodaux Field Office

Data Source:
 The land-water data were obtained from digital imagery (Z/I Imaging digital mapping camera) with 1-meter resolution, acquired October-November 2005. All areas characterized by emergent vegetation, upland, wetland forest, or scrub-shrub were classified as land, while open water, aquatic beds, and mudflats were classified as water.



Data Collection Area (DCA)

The DCA includes field samplings of water level, salinity, vegetation, surface elevation change, and soils.

2005 Land-Water Acreage Results

Class	Study Area
Land	247
Water	1
Total	248

Project Location

