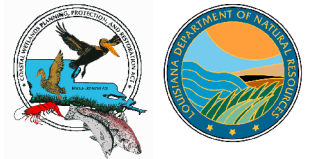
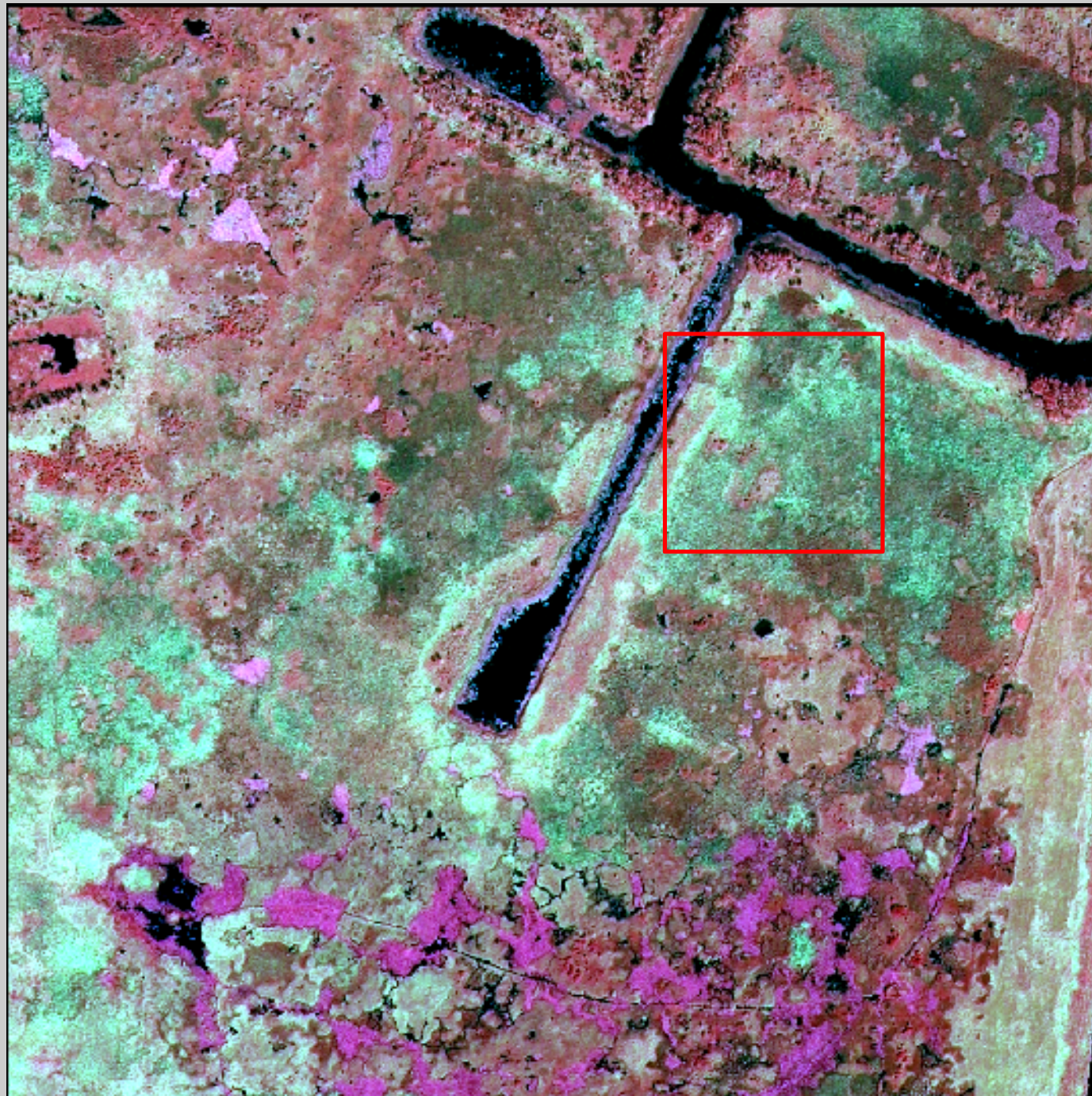


# CRMS Site 2887

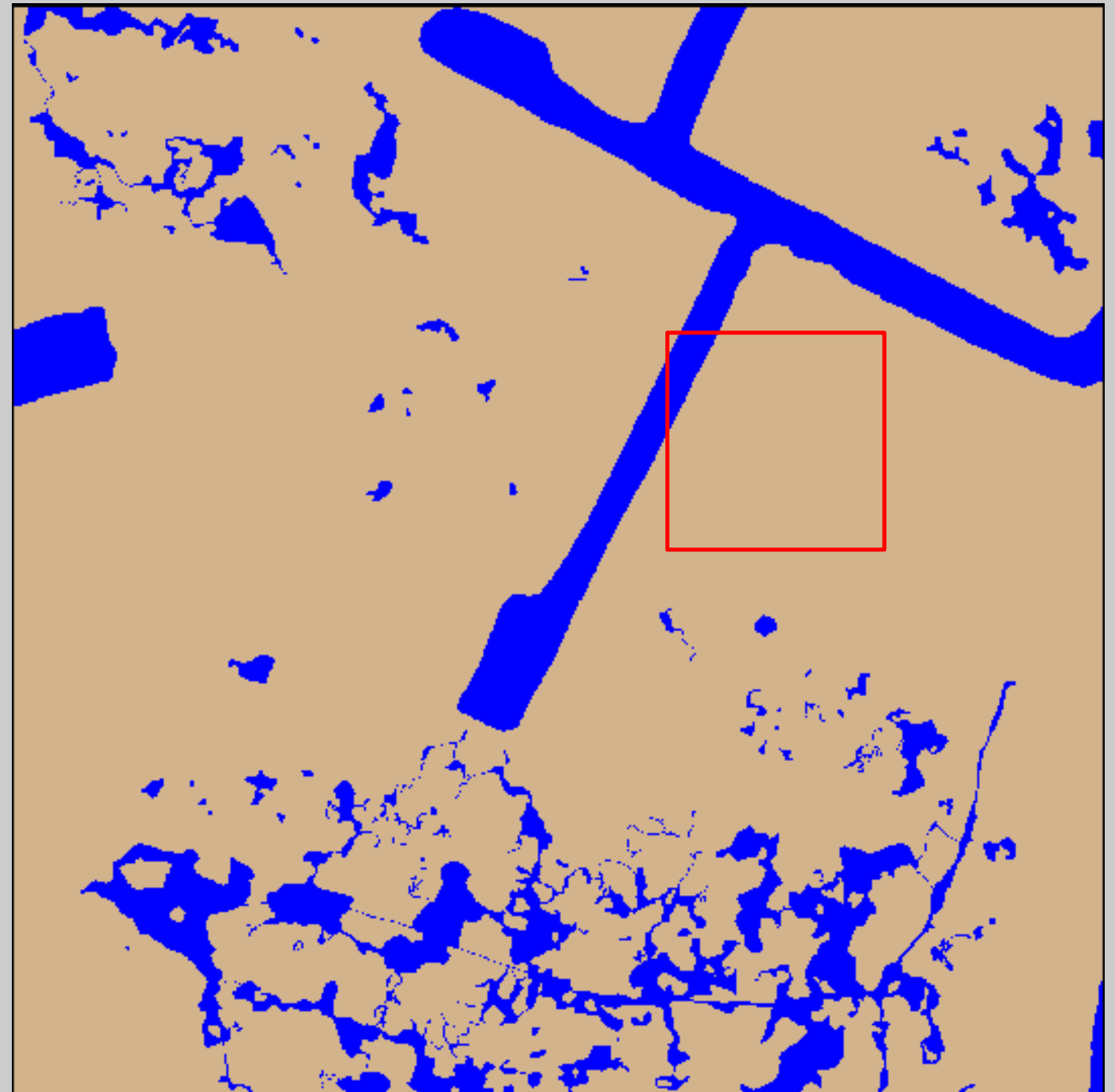
Coastwide Reference Monitoring System (CRMS)  
2005 Digital Image and Land-Water Classification



2005 Digital Image

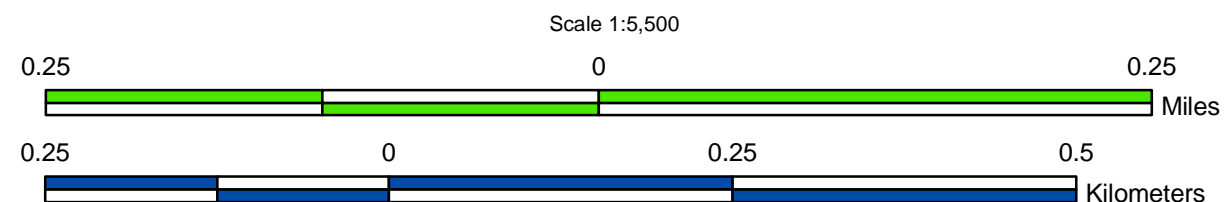


2005 Land-Water Classification



Prepared by:  
U.S. Department of the Interior  
U.S. Geological Survey  
National Wetlands Research Center  
Lafayette, Louisiana  
Prepared for:  
Louisiana Department of Natural Resources  
Coastal Restoration Division  
Thibodaux Field Office

Data Source:  
The land-water data were obtained from digital imagery (Z/I Imaging digital mapping camera) with 1-meter resolution, acquired October-November 2005. All areas characterized by emergent vegetation, upland, wetland forest, or scrub-shrub were classified as land, while open water, aquatic beds, and mudflats were classified as water.



**Data Collection Area (DCA)**

The DCA includes field samplings of water level, salinity, vegetation, surface elevation change, and soils.

**2005 Land-Water Acreage Results**

Class	Study Area
Land	213
Water	35
<b>Total</b>	<b>248</b>

