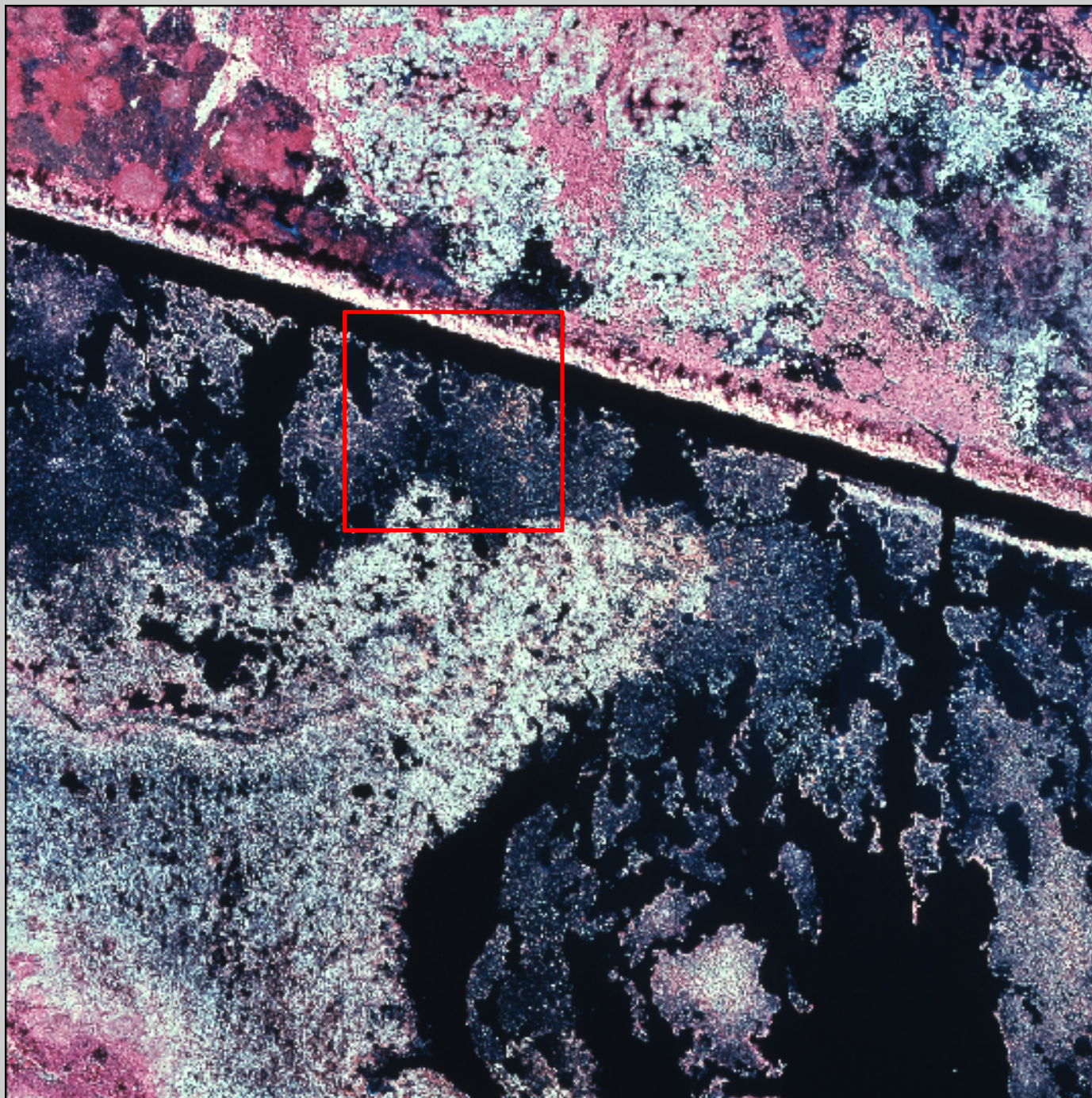
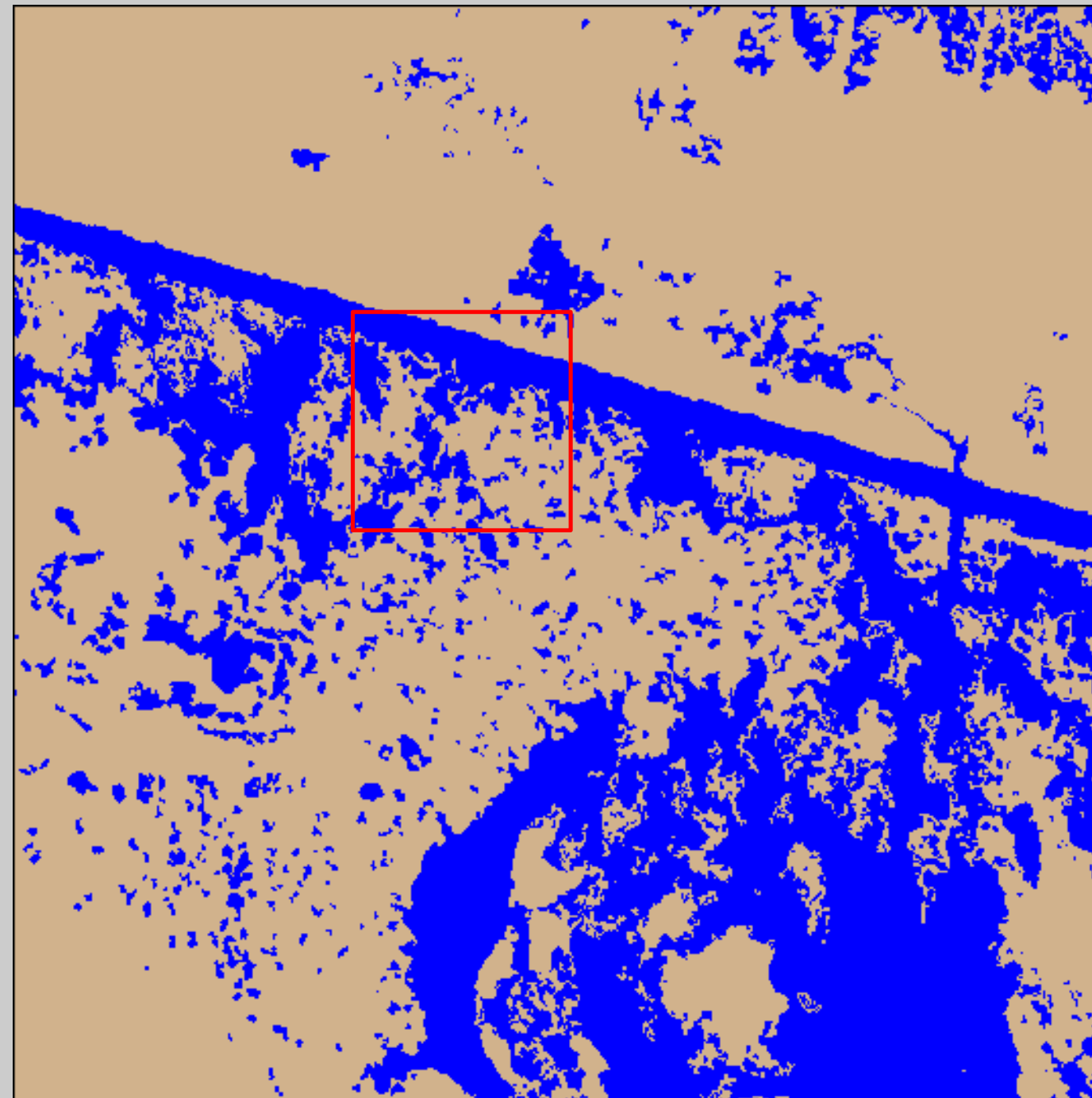


2000 Photomosaic

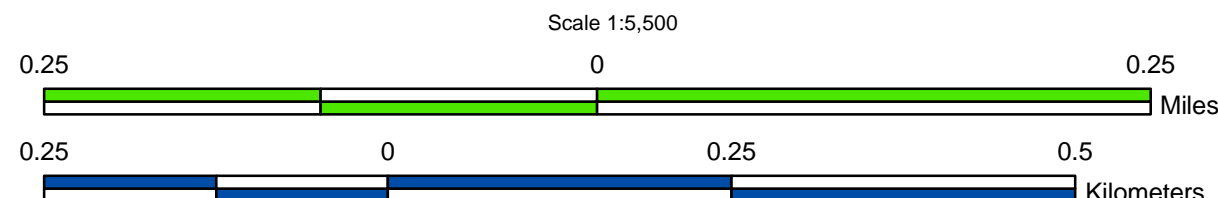


2000 Land-Water Analysis



Prepared by:
 U.S. Department of the Interior
 U.S. Geological Survey
 National Wetlands Research Center
 Lafayette, Louisiana
 Prepared for:
 Louisiana Department of Natural Resources
 Coastal Restoration Division
 New Orleans Field Office

Data Source:
 The land-water data were obtained from color infrared aerial photography acquired November 29, 2000 at 1:12,000 scale. All areas characterized by emergent vegetation, upland, wetland forest, or scrub-shrub were classified as land, while open water, aquatic beds, and mudflats were classified as water.



Data Collection Area (DCA)

The DCA includes field samplings of water level, salinity, vegetation, surface elevation change, and soils.

2000 Land-Water Acreage Results

| Class | Study Area |
|--------------|------------|
| Land | 161 |
| Water | 87 |
| Total | 248 |

Project Location

