

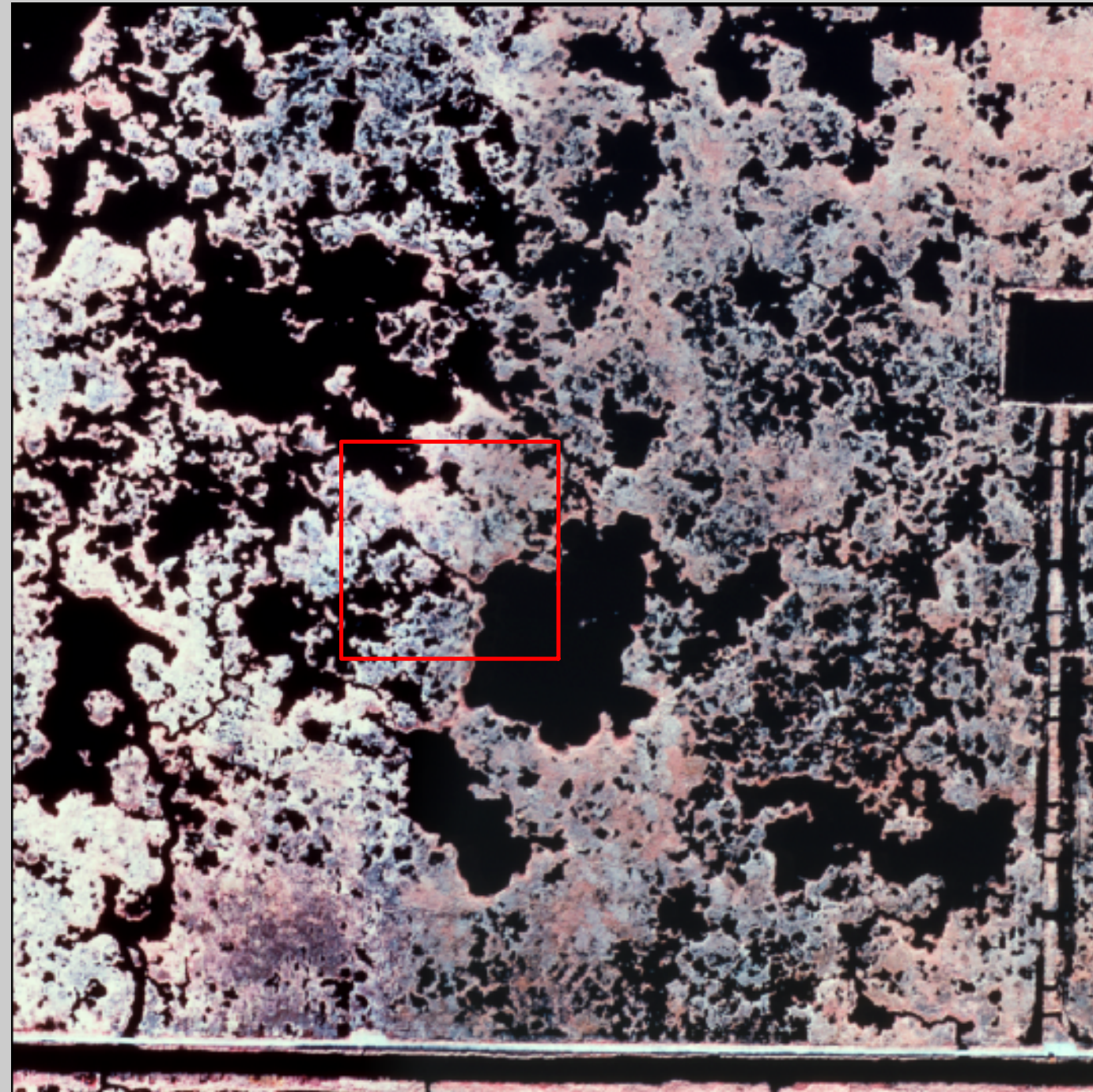
CRMS Site 2334

Coastwide Reference Monitoring System (CRMS)

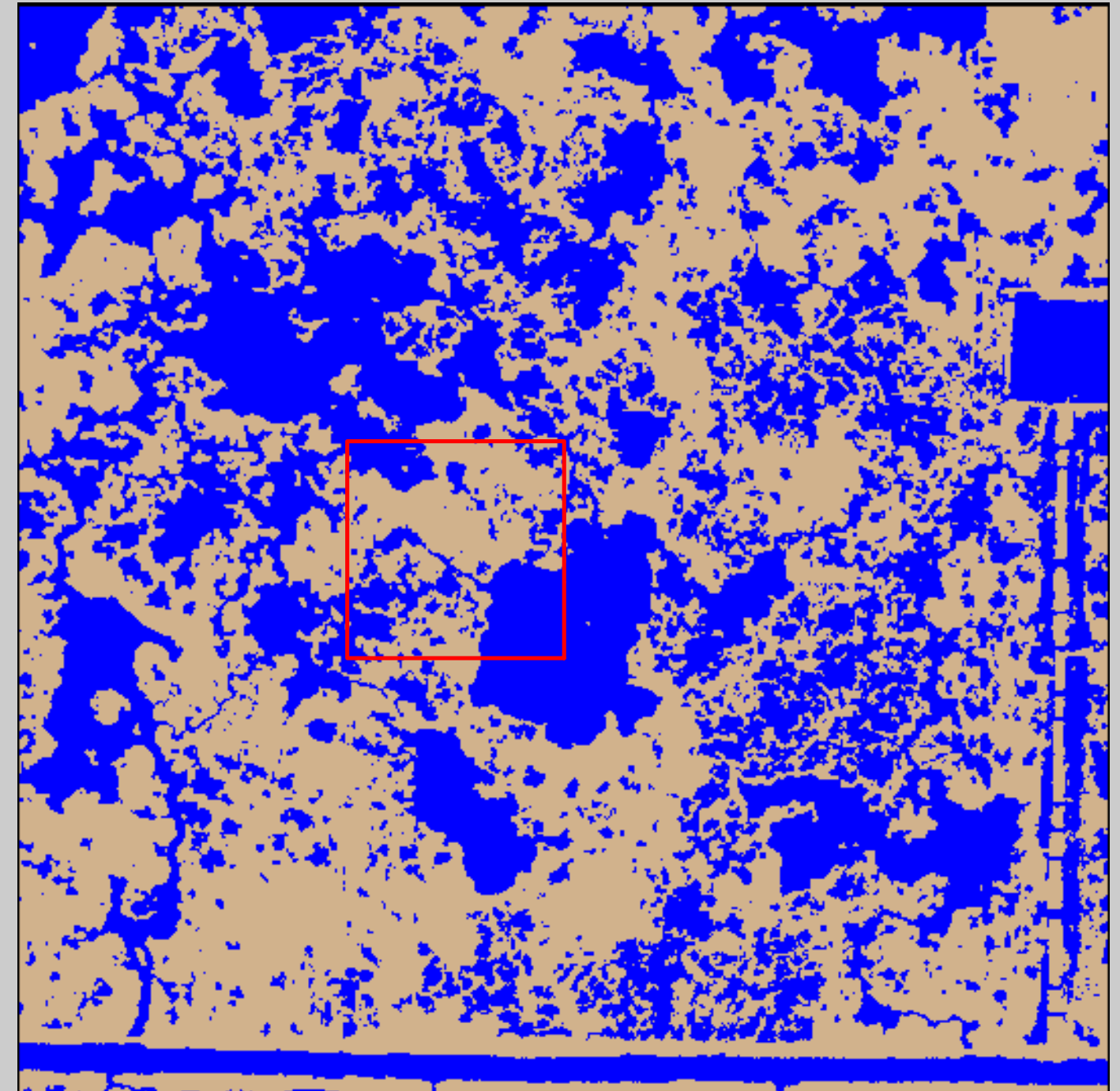
2000 Photomosaic and Land-Water Analysis



2000 Photomosaic

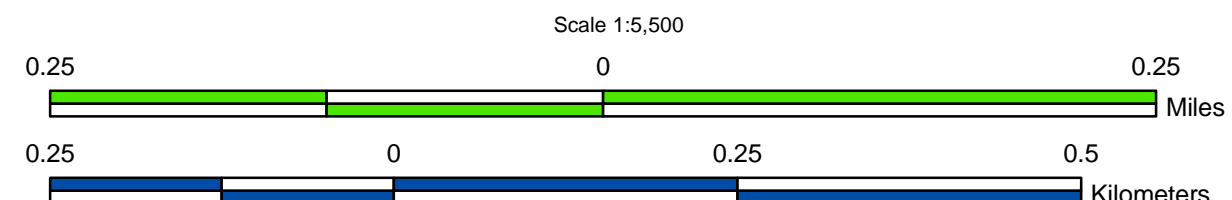


2000 Land-Water Analysis



Prepared by:
U.S. Department of the Interior
U.S. Geological Survey
National Wetlands Research Center
Lafayette, Louisiana
Prepared for:
Louisiana Department of Natural Resources
Coastal Restoration Division
Lafayette Field Office

Data Source:
The land-water data were obtained from color infrared aerial photography acquired November 27, 2000 at 1:24,000 scale. All areas characterized by emergent vegetation, upland, wetland forest, or scrub-shrub were classified as land, while open water, aquatic beds, and mudflats were classified as water.



Data
Collection
Area
(DCA)

The DCA includes field samplings of water level, salinity, vegetation, surface elevation change, and soils.

2000 Land-Water Acreage Results

Class	Study Area
Land	140
Water	108
Total	248

Project Location

