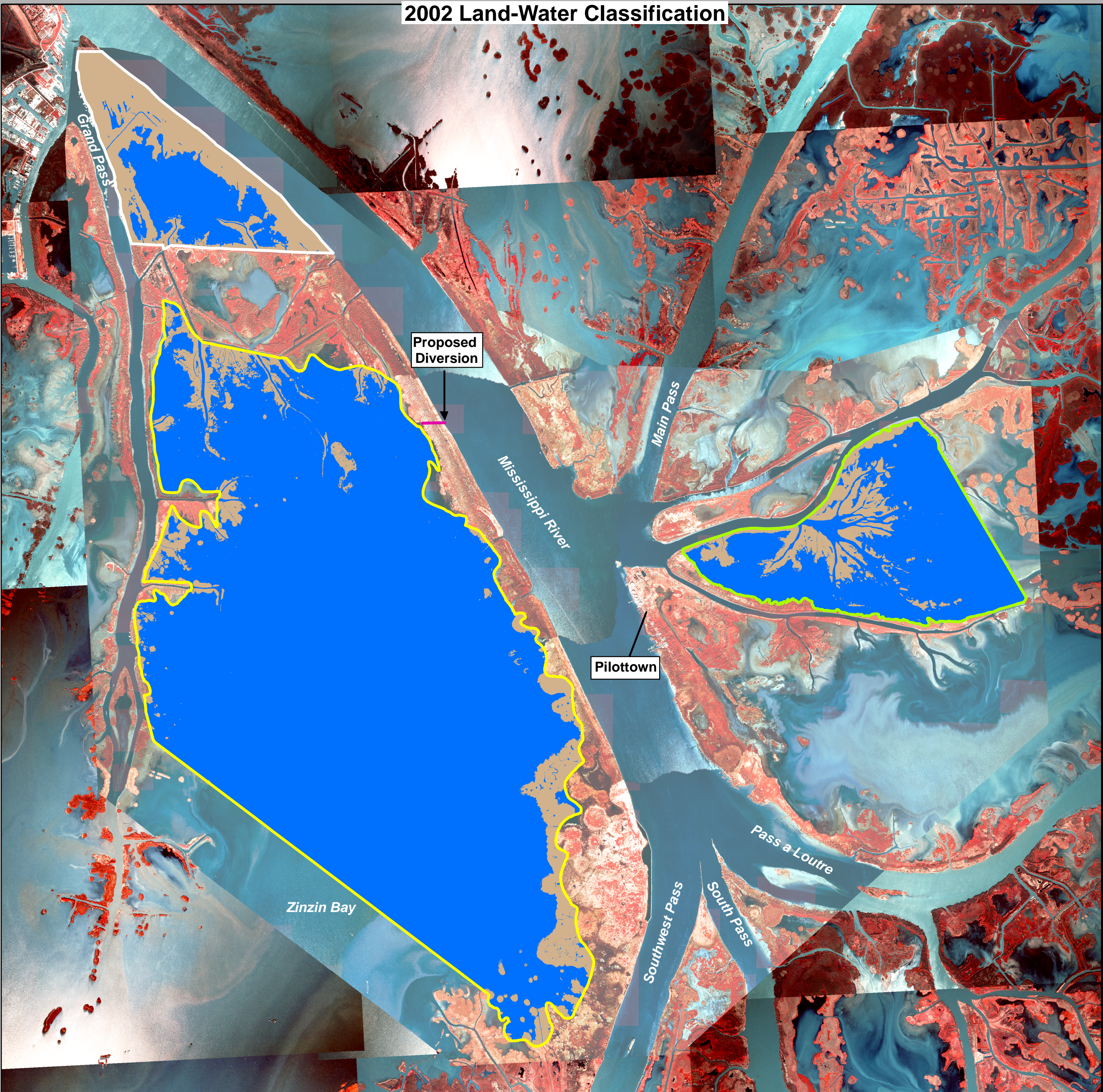
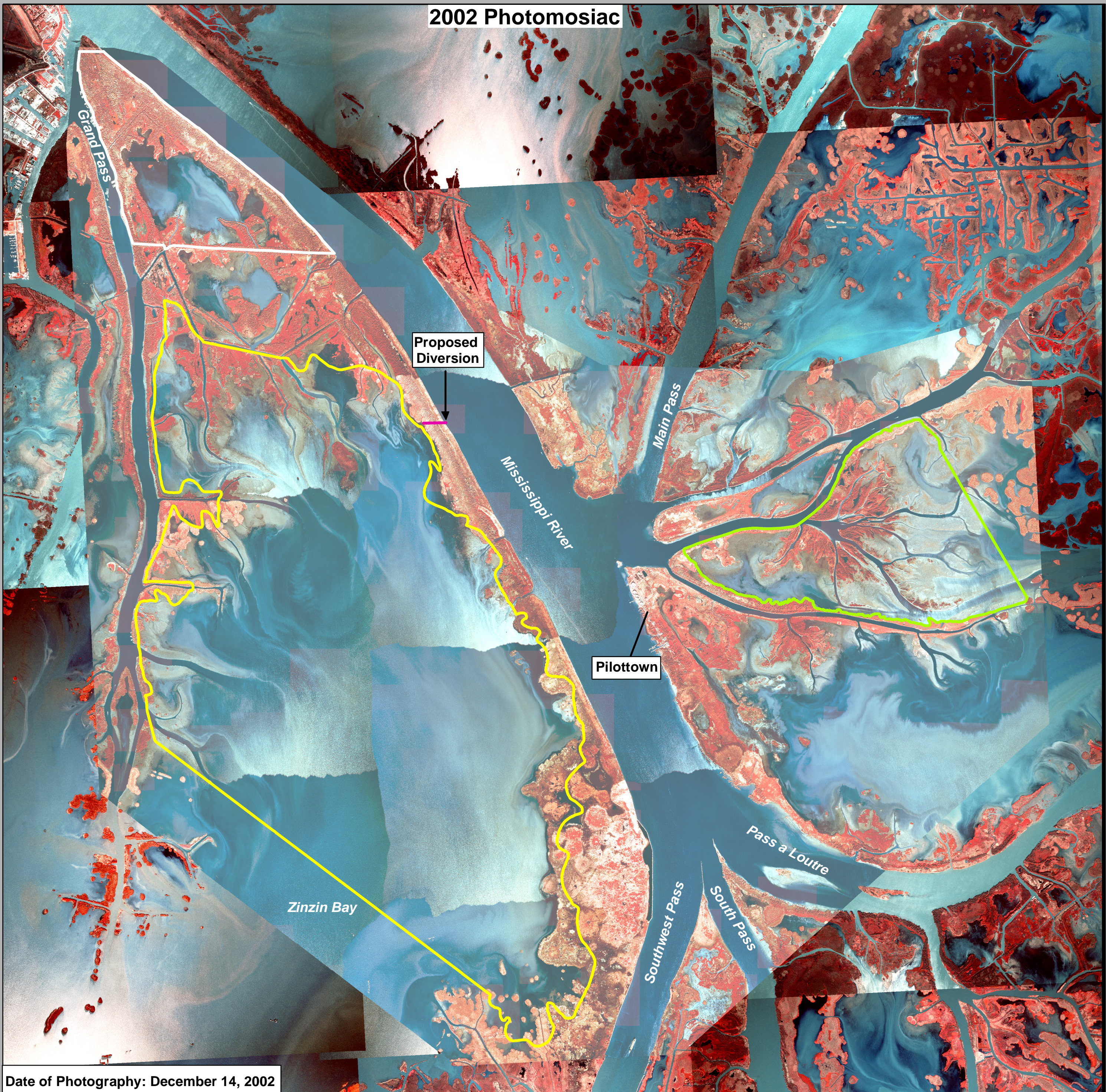


West Bay Sediment Diversion (MR-03)

Coastal Wetlands Planning, Protection, and Restoration Act

2002 and 2008 Digital Images and Land-Water Classifications



Project Location



Plaquemines Parish

Project Description:

The West Bay Sediment Diversion (MR-03) project is located on the west bank of the Mississippi River in Plaquemines Parish, Louisiana. The project area is located on the abandoned West Bay Complex subdelta of the Mississippi River Delta. Natural characteristics of abandoned deltas are subsidence and sediment deprivation, which are the main factors influencing land loss in the area. The purpose of the project is to promote the formation of emergent marsh through construction of crevasses and the placement of the dredged material. The location of this project's receiving basin, along with the shallow depth and open-ended configuration, will maximize the potential for emergent marsh creation.

2002 Land-Water Acreage Results				2008 Land-Water Acreage Results			
Class	Project Area	Reference Area 1	Reference Area 2	Project Area	Reference Area 1	Reference Area 2	
Land	1,110	489	861	1,493	680	844	
Water	11,186	1,853	627	10,803	1,662	644	
Total	12,296	2,342	1,488	12,296	2,342	1,488	

Project Strategies:

The West Bay Sediment Diversion project includes a conveyance channel for a large uncontrolled diversion of water and sediment from the Mississippi River. Designed to be sediment rich, the diversion's angle, depth, and site location were designed to increase the concentration of bed material per unit volume water diverted. Completed November 6, 2003, the diversion was constructed at a 120-degree angle from the downstream direction. The U.S. Army Corps of Engineers perform channel patrol surveys to monitor the navigation channels in the Mississippi River Delta, these surveys have now been extended to provide information on channel response due to the diversion project..

