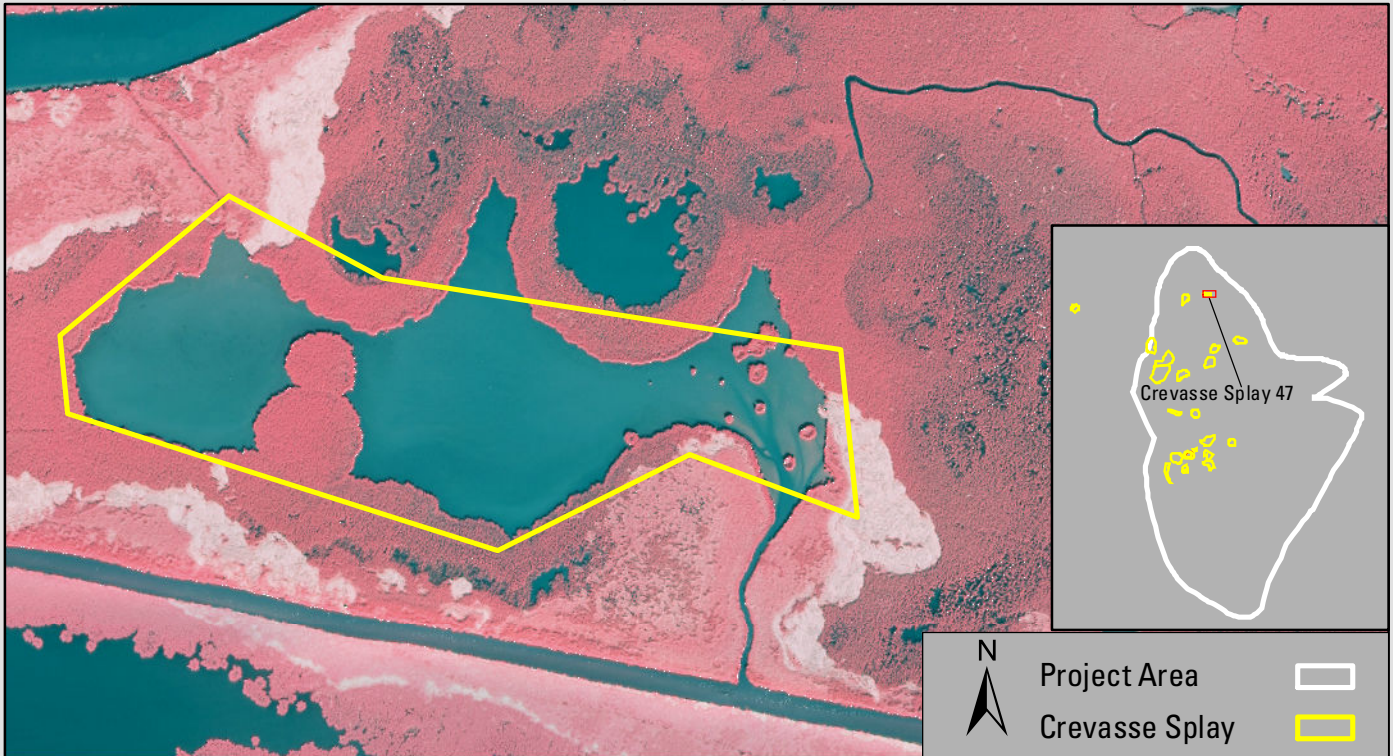
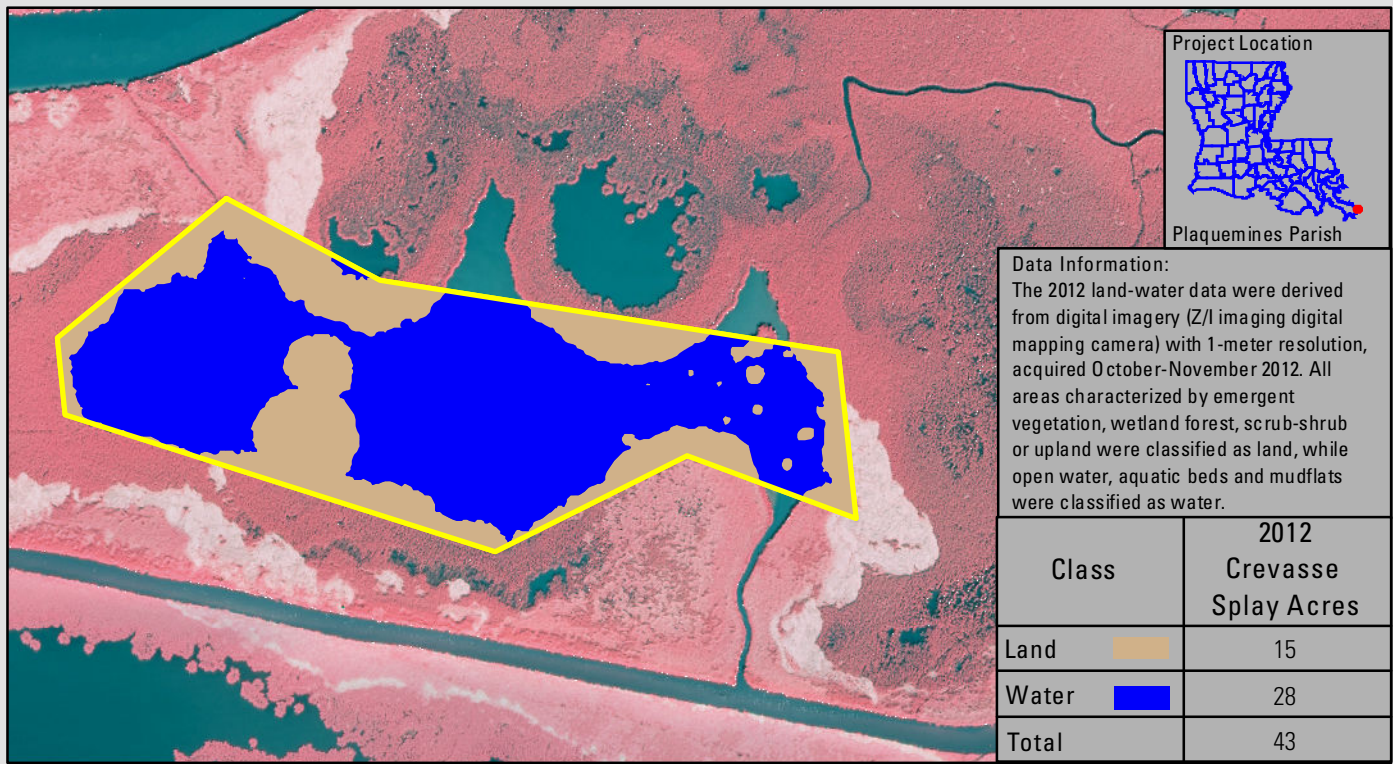


2012 Digital Imagery



2012 Land-Water Classification



Data Information:
The 2012 land-water data were derived from digital imagery (Z/I imaging digital mapping camera) with 1-meter resolution, acquired October-November 2012. All areas characterized by emergent vegetation, wetland forest, scrub-shrub or upland were classified as land, while open water, aquatic beds and mudflats were classified as water.

Prepared by:
U.S. Department of the Interior
U.S. Geological Survey
National Wetlands Research Center
Lafayette, Louisiana
and
Louisiana Coastal Protection and Restoration Authority
New Orleans Regional Office

Scale= 1:8,000



Federal Sponsor:
National Marine Fisheries Service

