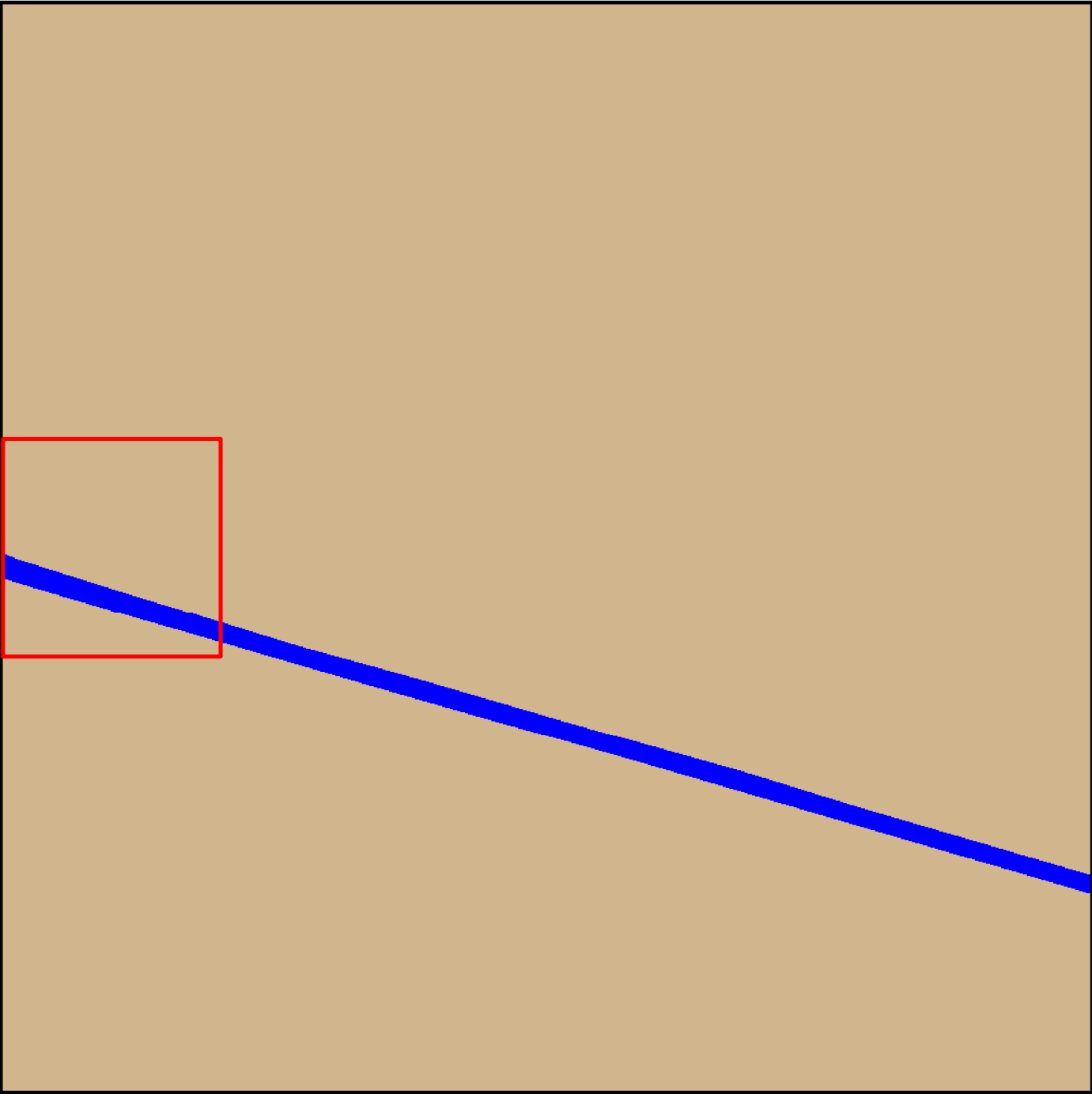
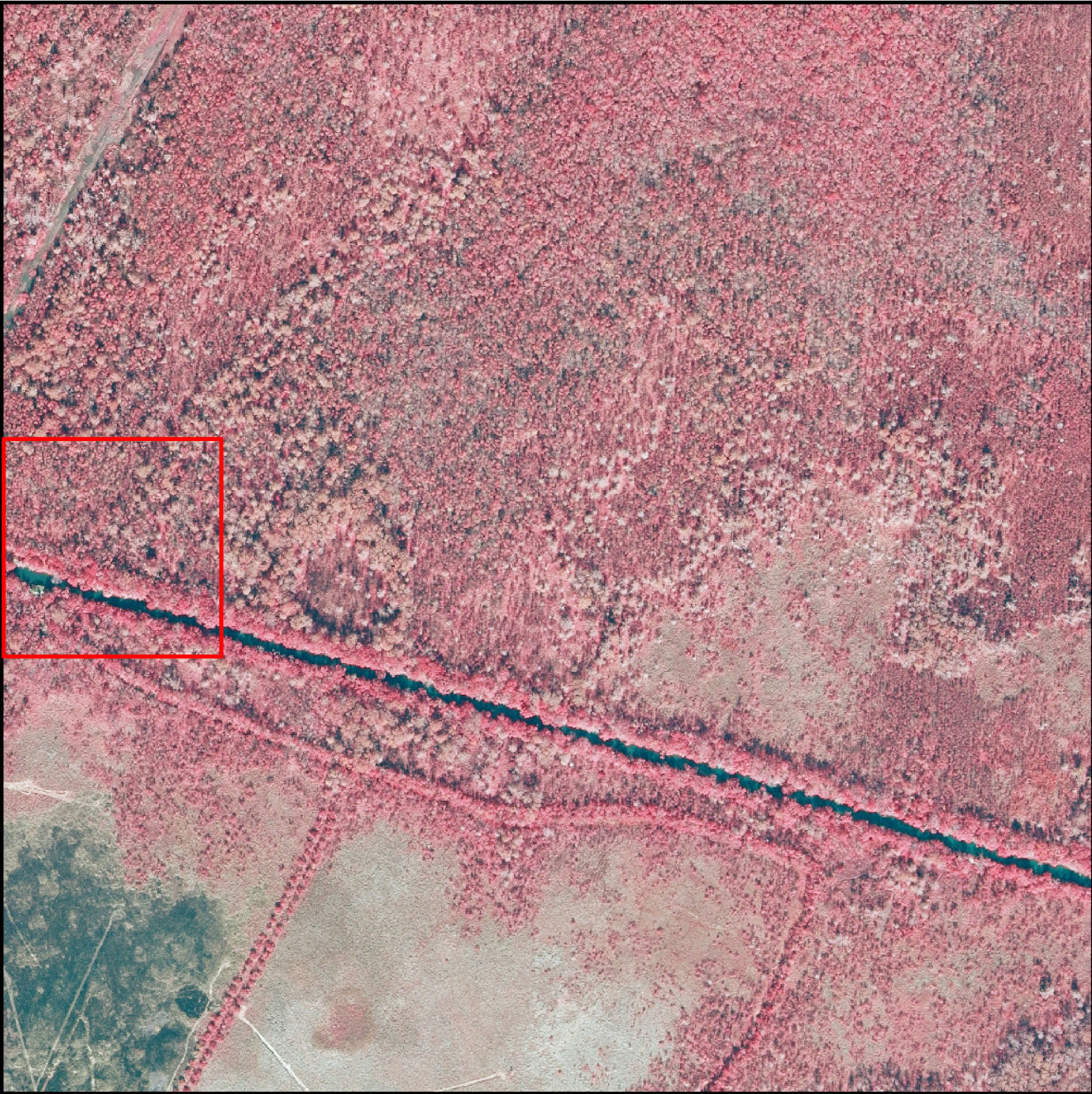


CRMS Site 547
Coastwide Reference Monitoring System (CRMS)
2012 Digital Image and Land-Water Classification



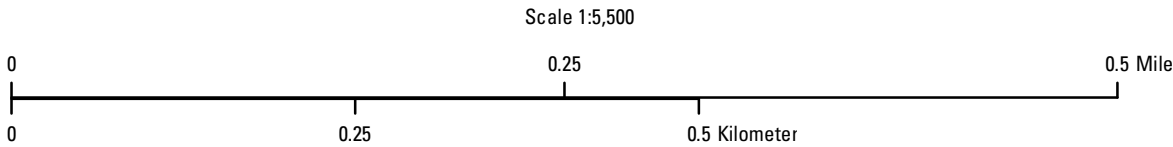
2012 Digital Image

2012 Land-Water Classification



Prepared by:
U.S. Department of the Interior
U.S. Geological Survey
National Wetlands Research Center
Lafayette, Louisiana
Prepared for:
Louisiana Coastal Protection and
Restoration Authority
Lafayette Regional Office

Data Information:
The 2012 land-water data were obtained from
digital imagery (Z/I Imaging digital mapping
camera) with 1-meter resolution, acquired
October 2012. All areas characterized by
emergent vegetation, upland, wetland
forest, or scrub-shrub were classified as land,
while open water, aquatic beds, and mudflats
were classified as water.



Data
Collection
Area
(DCA)

The DCA includes field
samplings of water
level, salinity, vegetation,
surface elevation
change, and soils.

2012 Land-Water Acreage Results	
Class	Study Area
Land	243
Water	5
Total	248

