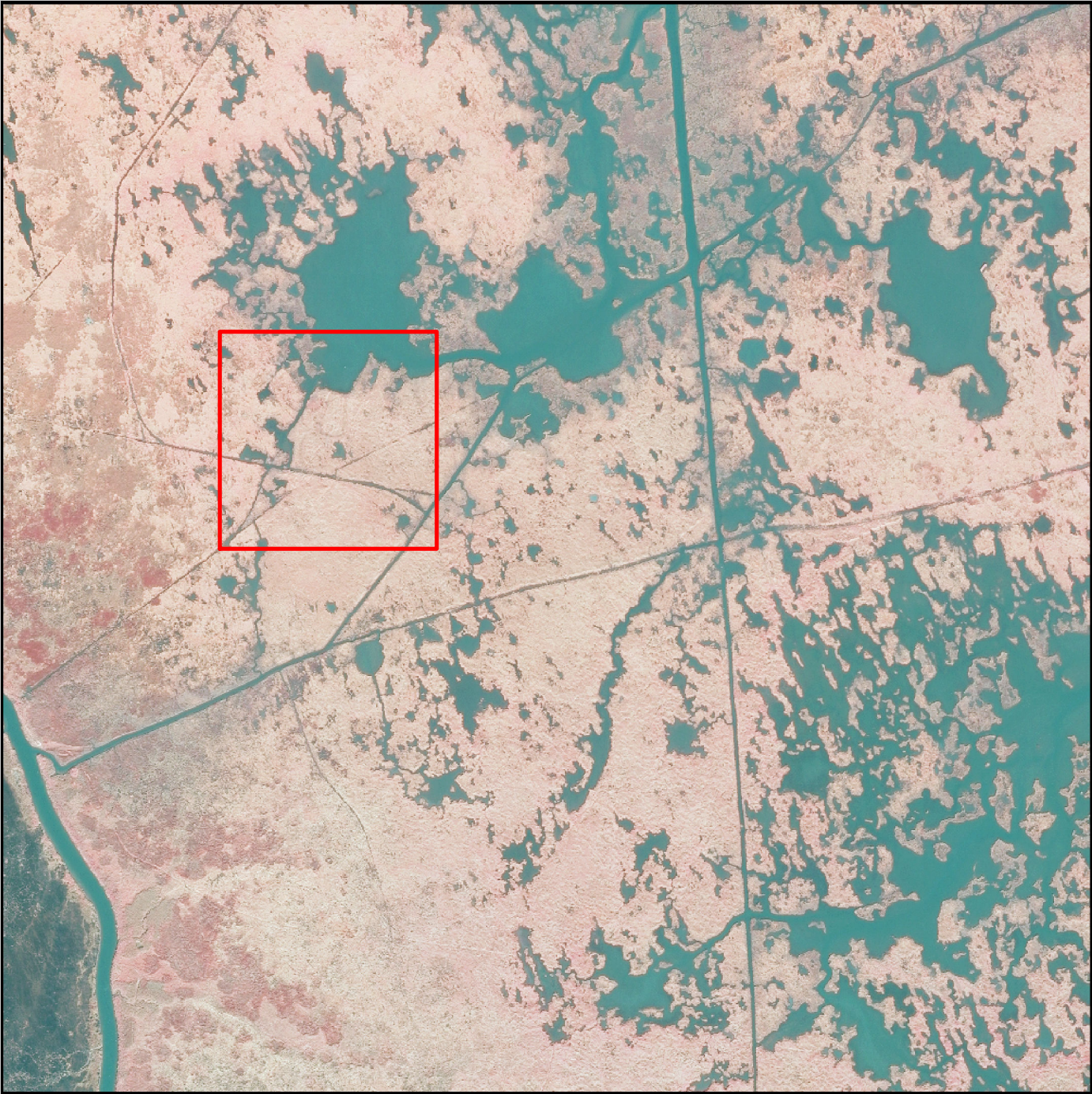


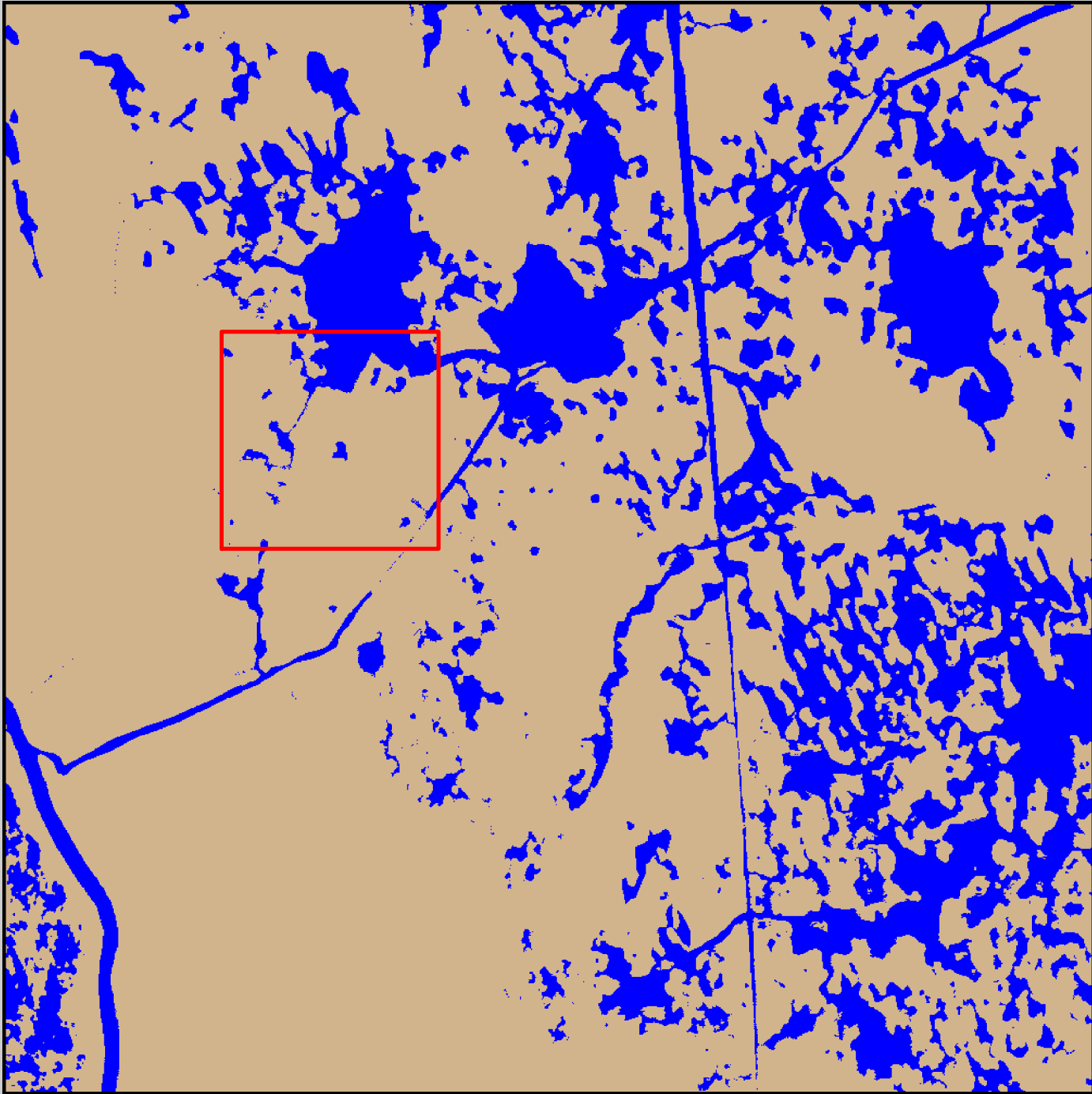
CRMS Site 684  
Coastwide Reference Monitoring System (CRMS)  
2012 Digital Image and Land-Water Classification



2012 Digital Image



2012 Land-Water Classification



Prepared by:  
U.S. Department of the Interior  
U.S. Geological Survey  
National Wetlands Research Center  
Lafayette, Louisiana  
Prepared for:  
Louisiana Coastal Protection and  
Restoration Authority  
Lafayette Regional Office

Data Information:  
The 2012 land-water data were obtained from digital imagery (Z/I Imaging digital mapping camera) with 1-meter resolution, acquired October 2012. All areas characterized by emergent vegetation, upland, wetland forest, or scrub-shrub were classified as land, while open water, aquatic beds, and mudflats were classified as water.



Data  
Collection  
Area  
(DCA)

The DCA includes field samplings of water level, salinity, vegetation, surface elevation change, and soils.

2012 Land-Water Acreage Results	
Class	Study Area
Land	189
Water	59
Total	248

