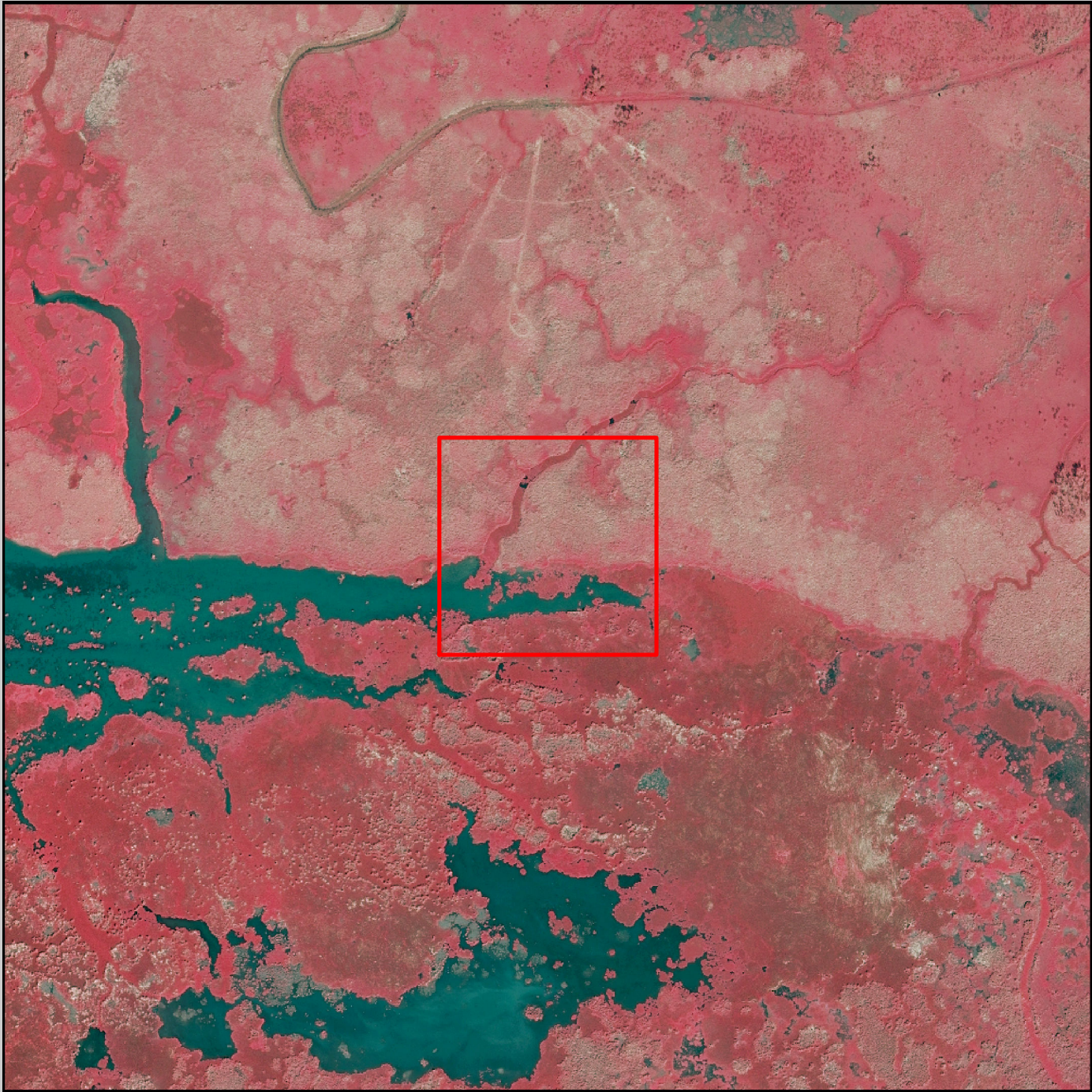


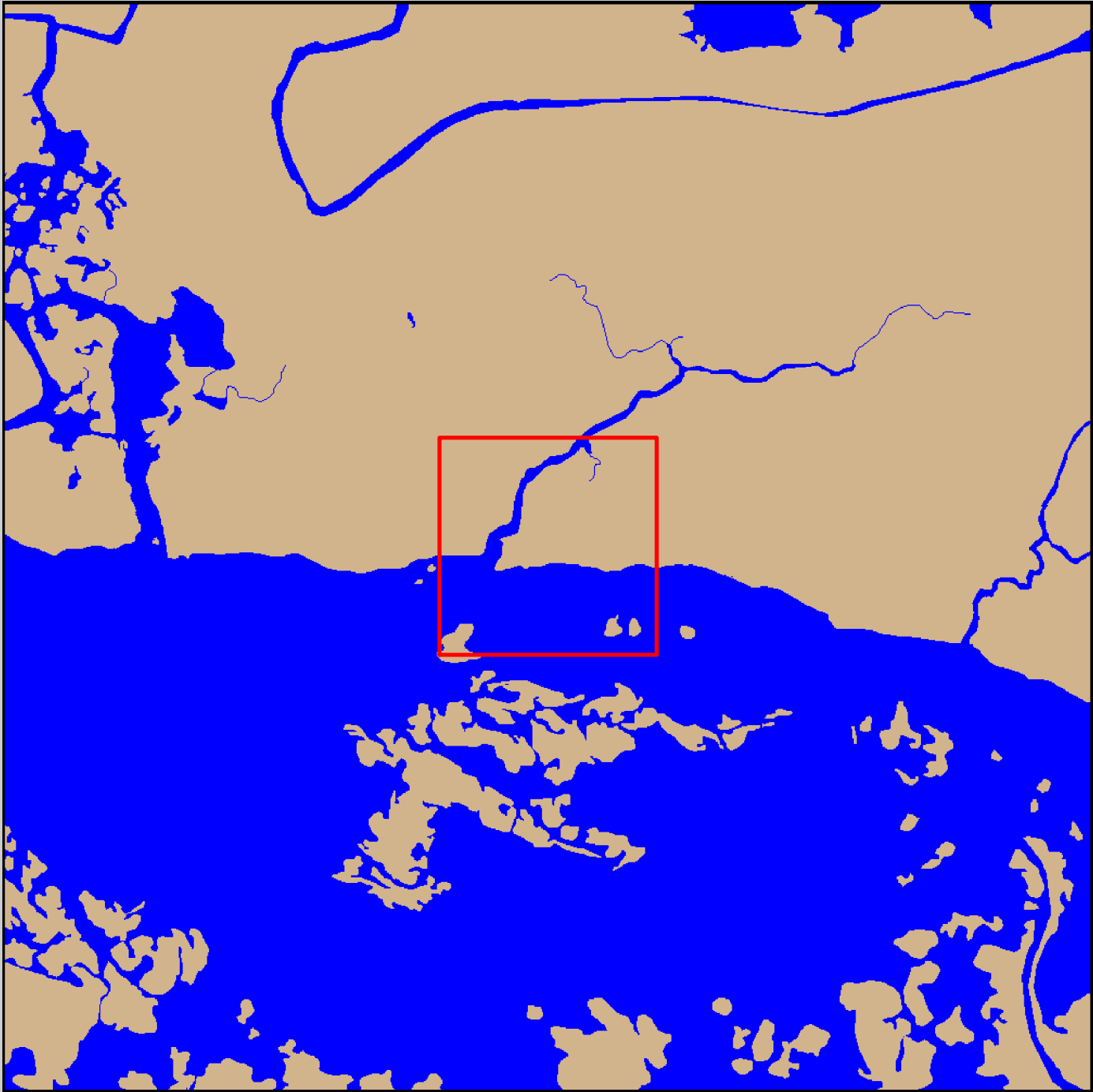
CRMS Site 463
Coastwide Reference Monitoring System (CRMS)
2012 Digital Image and Land-Water Classification



2012 Digital Image

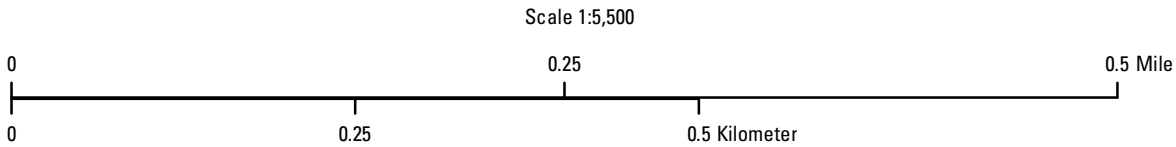


2012 Land-Water Classification



Prepared by:
U.S. Department of the Interior
U.S. Geological Survey
National Wetlands Research Center
Lafayette, Louisiana
Prepared for:
Louisiana Coastal Protection and
Restoration Authority
Thibodaux Regional Office

Data Information:
The 2012 land-water data were obtained from digital imagery (Z/I Imaging digital mapping camera) with 1-meter resolution, acquired October 2012. All areas characterized by emergent vegetation, upland, wetland forest, or scrub-shrub were classified as land, while open water, aquatic beds, and mudflats were classified as water.



Data
Collection
Area
(DCA)

The DCA includes field samplings of water level, salinity, vegetation, surface elevation change, and soils.

2012 Land-Water Acreage Results	
Class	Study Area
Land	142
Water	106
Total	248

