



# Coastal Wetlands Planning, Protection, and Restoration Act (CWPPRA) Priority Project List 22 Regional Planning Team (RPT) Coastwide Voting Meeting

LA Department of Wildlife and Fisheries (Louisiana Room)  
2000 Quail Drive, Baton Rouge, LA  
February 15, 2012, 10:00 a.m. – 1:00 p.m.

## AGENDA

**Meeting Purpose:** To select PPL 22 nominees from the list of projects proposed during the PPL 22 Regional Planning Team (RPT) meetings held on January 24<sup>th</sup>, 25<sup>th</sup>, and 26<sup>th</sup>, 2011. Information on the PPL 22 project proposals is available on the web at: [http://www.mvn.usace.army.mil/pd/cwppra\\_mission.htm](http://www.mvn.usace.army.mil/pd/cwppra_mission.htm). The CWPPRA Agencies and Participating Coastal Parishes will vote to select 21 nominee projects and 6 demonstration projects as described below.

### 1. Welcome and Introductions.

### 2. Procedures for PPL 22 Coastwide Voting:

- a. Project proposals or changes will **NOT** be made during the meeting (proposals were accepted during the RPT meetings only, and changes were due by February 3, 2012).
- b. Public comments will **NOT** be accepted during the meetings (oral comments were accepted during the RPT meetings and written comments were due by February 3, 2012).
- c. Coastal Parish Voting representatives will complete voting sheets, ranking projects by each basin from highest to lowest, giving highest value to their highest priority project.
- d. All voting sheets for all basins will be collected between 10:00 a.m. and 11:00 a.m.
- e. Votes will be tallied and sorted for all basins after all voting sheets are collected.
- f. The projects with the highest resulting scores will be selected as PPL 22 nominees as follows for each basin: three projects will be selected in Terrebonne, Barataria, and Pontchartrain; two will be selected in the Breton Sound, Teche/Vermilion, Mermentau, Calcasieu/Sabine, and Mississippi River Basins; and one project has been selected by default in the Atchafalaya Basin (no vote necessary).
- g. One coastwide project will be selected.
- h. Four demonstration projects have been selected by default (no vote necessary).
- i. PPL 22 nominee project voting results will be presented during the meeting and posted on the CWPPRA Newsflash and on the web at:  
[http://www.mvn.usace.army.mil/pd/cwppra\\_mission.htm](http://www.mvn.usace.army.mil/pd/cwppra_mission.htm).

### 3. Explanation of Nominee Project Evaluations and Technical Committee Selection of PPL 22 Project Candidates.

### 4. Meeting Announcements:

|                    |           |                       |             |
|--------------------|-----------|-----------------------|-------------|
| April 19, 2012     | 9:30 a.m. | Technical Committee   | New Orleans |
| June 5, 2012       | 9:30 a.m. | Task Force            | Lafayette   |
| September 12, 2012 | 9:30 a.m. | Technical Committee   | Baton Rouge |
| October 11, 2012   | 9:30 a.m. | Task Force            | New Orleans |
| November 14, 2012  | 7:00 p.m. | PPL 22 Public Meeting | Abbeville   |
| November 15, 2012  | 7:00 p.m. | PPL 22 Public Meeting | New Orleans |
| December 12, 2012  | 9:30 a.m. | Technical Committee   | Baton Rouge |

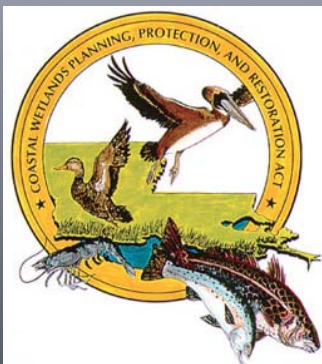
# Coastal Wetlands Planning, Protection and Restoration Act (CWPPRA)

## PPL 22 Coastwide Voting Meeting



15 February, 2012  
Baton Rouge, LA

## 1. Welcome and Introductions

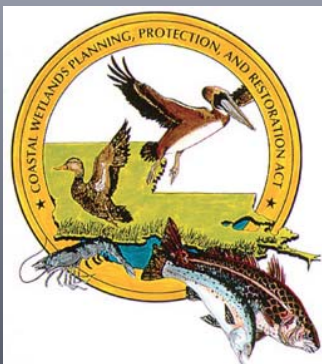


## Meeting Purpose

- To select PPL 22 nominees from the list of projects proposed during the PPL 22 Regional Planning Team (RPT) meetings held on January 24, 25, and 26, 2012. The CWPPRA agencies and participating coastal parishes will vote to select 21 nominee projects and 6 demonstration projects.



## 2. Explanations of Procedures/ Announcements



## Explanation of Procedures: General

- Initial Regional Planning Team (RPT) meetings took place Jan. 24-26, 2012 to accept project nominations under PPL 22.
- Parishes were expected to identify voting representatives during or prior to the RPT meetings
- This coastwide voting meeting is being held to conduct voting by basin, when necessary, with the end result being a list of 21 nominees and 4 demos for PPL 22 (3 demos did NOT meet the necessary qualifications)
- Paper ballots will be provided to each designated voter in each basin



## Explanation of Procedures: Ground Rules

- Nominees will be selected by consensus, if possible
- No voting will be necessary for the Atchafalaya Basin (selected by default, only one nomination)
- If voting is required, each officially designated parish representative in the basin and each Federal agency and the State will vote
- Eligible voters will rank the highest number of points in each basin, the next highest one less, and so on, with the lowest ranking project receiving one point (voters must assign a point score to all projects)



## Coastwide Voting Meeting Overview

- Project proposals or changes will NOT be made during the meeting
- Public comments on projects will NOT be accepted during the meeting
- Voters rank project by each basin from highest to lowest, giving highest value to highest priority project
- Voting sheets for all basins will be collected between 9:30 a.m. and 10:30 a.m.
- Votes will be tallied and sorted for all basins after all voting sheets are collected
- Projects with the highest resulting scores will be selected as PPL 22 nominees so follows for each basin:
  - 3 in Terrebonne, Barataria, Pontchartrain, and Breton Sound Basins
  - 2 in Teche/Vermilion, Mermentau, Calcasieu/Sabine, Mississippi River Basins
  - 1 in Atchafalaya Basin (selected by default, no vote necessary)
- One coastwide project will be selected
- Four demo projects will be selected (selected by default, no vote necessary)
- Voting results will be presented during the meeting and posted on the CWPRA Newsflash



## Explanation of Procedures: Voting Eligibility

| PPL 22      | Parish Eligibility to Vote in Basins |                           |                 |              |               |                |                    |                     |              |                                    | Designated Parishes Signed Up to Vote on Feb 15, 2012 |  |
|-------------|--------------------------------------|---------------------------|-----------------|--------------|---------------|----------------|--------------------|---------------------|--------------|------------------------------------|---|--|
| Parish      | R1-Pontchartrain                     | R2-Mississippi Riv. Delta | R2-Breton Sound | R2-Barataria | R3-Terrebonne | R3-Atchafalaya | R3-Teche-Vermilion | R4-Calcasieu-Sabine | R4-Mermentau | Demonstration Projects (coastwide) | Designated Primary Voting Representative              | Designated Alternate Voting Representative |
| Ascension   | X                                    |                           | X               |              |               |                |                    |                     |              | X                                  |   |  |
| Assumption  |                                      |                           | X               | X            |               |                |                    |                     |              | X                                  |   |  |
| Calcasieu   |                                      |                           |                 |              |               |                |                    | X                   |              | X                                  | Laurie Cormier  | Pam Mattingly                              |
| Cameron     |                                      |                           |                 |              |               |                |                    | X                   | X            | X                                  | Tina Horn   | Myles Hebert                               |
| Iberia      |                                      |                           |                 |              | X             | X              | X                  |                     |              | X                                  | Prescott Marshall                                     | Joel Ducas                                 |
| Jefferson   | X                                    |                           | X               |              |               |                |                    |                     |              | X                                  | Marnie Winter   | Jason Smith                                |
| Lafourche   |                                      |                           | X               | X            |               |                |                    |                     |              | X                                  | Archie Chaisson                                       | Lindsey Duffresne                          |
| Livingston  | X                                    |                           |                 |              |               |                |                    |                     |              | X                                  |   |  |
| Orleans     | X                                    |                           |                 |              |               |                |                    |                     |              | X                                  | Charles E. Allen                                      | Ronald Harper                              |
| Plaquemines | X                                    | X                         | X               | X            |               |                |                    |                     |              | X                                  | P.J. Hahn   | Albertine Kimble                           |
| St. Bernard | X                                    |                           | X               |              |               |                |                    |                     |              | X                                  | Ricky Melerine  | William McCartney                          |
| St. Charles | X                                    |                           | X               |              |               |                |                    |                     |              | X                                  | Earl Matherne   |  |
| St. James   | X                                    |                           |                 |              |               |                |                    |                     |              | X                                  | Jody Chenier  |  |
| St. John    | X                                    |                           | X               |              |               |                |                    |                     |              | X                                  | Angelic Sutherland                                    |  |
| St. Martin  |                                      |                           |                 |              | X             |                |                    |                     |              | X                                  |   |  |
| St. Mary    |                                      |                           |                 |              | X             | X              | X                  |                     |              | X                                  | Paul P. Naquin, Jr.                                   | Tammy Luke                                 |
| St. Tammany | X                                    |                           |                 |              |               |                |                    |                     |              | X                                  | Brian Fortson   | Danny Bond                                 |
| Tangipahoa  | X                                    |                           |                 |              |               |                |                    |                     |              | X                                  |   |  |
| Terrebonne  |                                      |                           |                 |              | X             | X              |                    |                     |              | X                                  | Nick Matherne   | Al Levron                                  |
| Vermilion   |                                      |                           |                 |              |               |                | X                  | X                   | X            | X                                  | Sherrill Sagrera                                      |  |

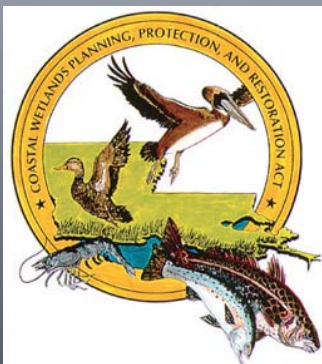


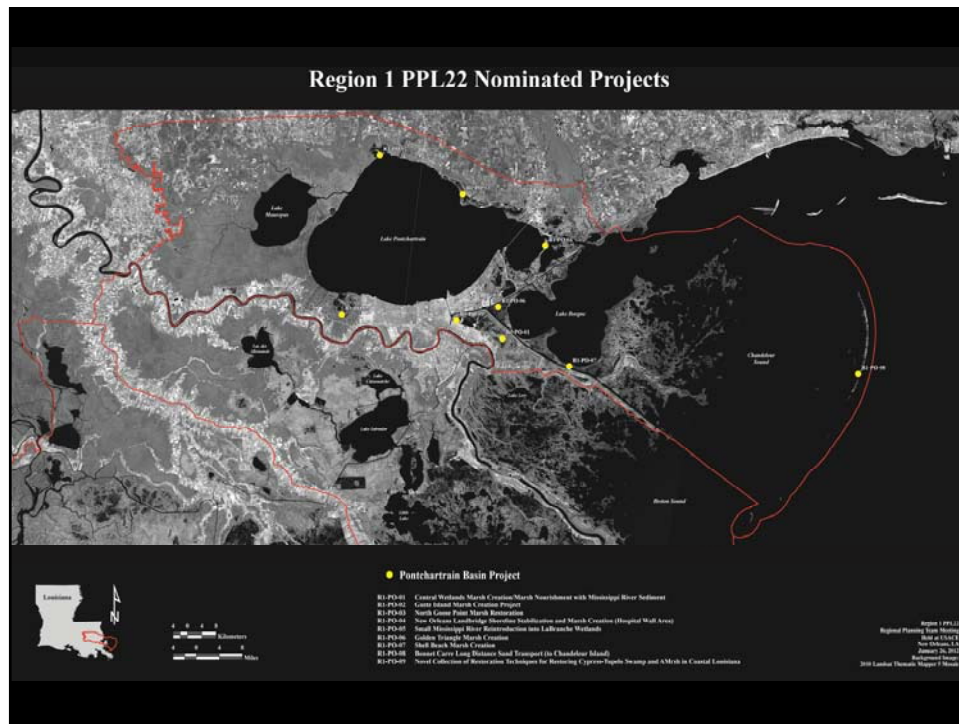
## Announcements: Upcoming Meetings

- Technical Committee Meeting:** 19 April 2012, New Orleans at 9:30 a.m.  
Selection of 10 PPL 22 candidates & up to 3 demos
- Task Force Meeting:** 5 June 2012, Lafayette at 9:30 a.m.
- Technical Committee Meeting:** 12 September 2012, Baton Rouge at 9:30 a.m.  
O&M and Monitoring funding recommendations
- Task Force Meeting:** 11 October 2012, Baton Rouge at 9:30 a.m.  
O&M and Monitoring funding approvals
- PPL 21 Public Meetings:** 14 November 2012, Abbeville at 7:00 p.m.  
15 November 2012, New Orleans at 7:00 p.m.
- Technical Committee Meeting:** 12 December 2012, Baton Rouge at 9:30 a.m.  
Recommendation of up to 4 PPL 22 projects and demo
- Task Force Meeting:** Jan 2012, New Orleans at 9:30 a.m.  
Final selection of projects for Phase I funding



## 3. Coastwide Voting by Basin






| PPL 22                            |  | Region 1 - PONTCHARTRAIN BASIN |     |      |      |       |       |           |         |             |             |             |           |          |             |            |       |
|-----------------------------------|--|--------------------------------|-----|------|------|-------|-------|-----------|---------|-------------|-------------|-------------|-----------|----------|-------------|------------|-------|
| Proposal Number                   | Project Proposals  | IFRA                           | EPA | MAFS | NRCS | USACE | USFWS | Jefferson | Orleans | Plaquemines | St. Bernard | St. Charles | St. James | St. John | St. Tammany | Tangipahoa | Total |
| R1-PO-01                          | Central Wetlands Marsh Creation/Marsh Nourishment with MR Sediment |                                |     |      |      |       |       |           |         |             |             |             |           |          |             |            | 0     |
| R1-PO-02                          | Guste Island Marsh Creation  |                                |     |      |      |       |       |           |         |             |             |             |           |          |             |            | 0     |
| R1-PO-03                          | North Goose Point Marsh Restoration                                |                                |     |      |      |       |       |           |         |             |             |             |           |          |             |            | 0     |
| R1-PO-04                          | New Orleans Landbridge Shoreline Stabilization & Marsh Creation    |                                |     |      |      |       |       |           |         |             |             |             |           |          |             |            | 0     |
| R1-PO-05                          | Small Mississippi River Reintroduction into LaBranche Wetlands     |                                |     |      |      |       |       |           |         |             |             |             |           |          |             |            | 0     |
| R1-PO-06                          | Golden Triangle Marsh Creation                                     |                                |     |      |      |       |       |           |         |             |             |             |           |          |             |            | 0     |
| R1-PO-07                          | Shell Beach Marsh Creation   |                                |     |      |      |       |       |           |         |             |             |             |           |          |             |            | 0     |
| R1-PO-08                          | Bonnet Carré Long Distance Sand Transport                          |                                |     |      |      |       |       |           |         |             |             |             |           |          |             |            | 0     |
| R1-PO-09                          | Triangle- Restoring Cypress-Tupelo Swamp & Marsh                   |                                |     |      |      |       |       |           |         |             |             |             |           |          |             |            | 0     |
| Rank 9 thru 1 for a total of = 45 |  | 0                              | 0   | 0    | 0    | 0     | 0     | 0         | 0       | 0           | 0           | 0           | 0         | 0        | 0           | 0          | 0     |

Name, title, and entity representing \_\_\_\_\_

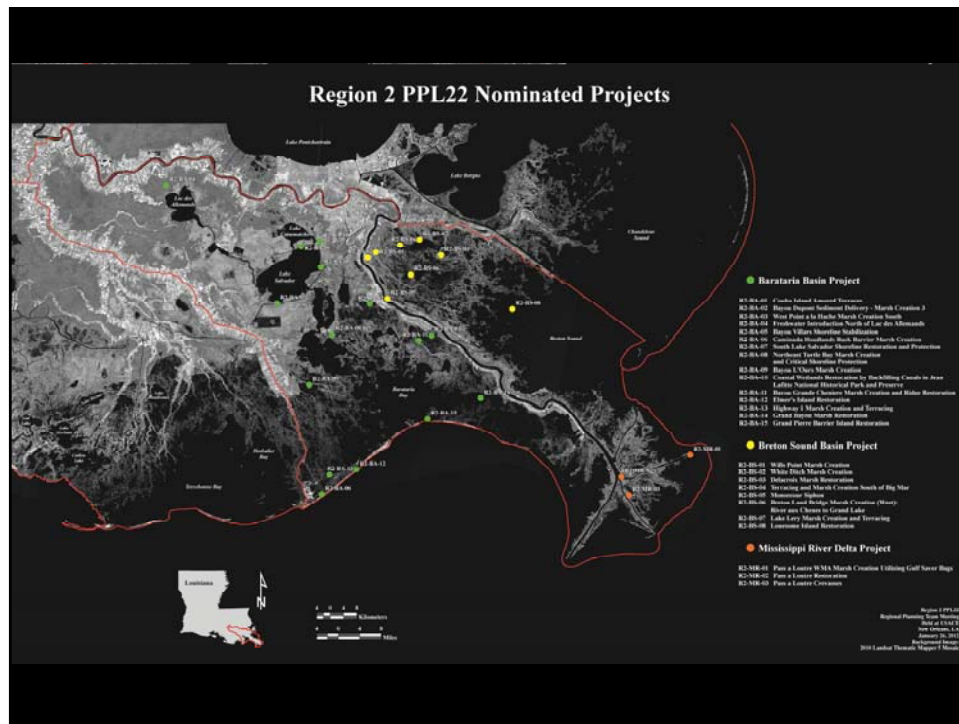
Signature \_\_\_\_\_

| Eligible Parishes:   | Signed Up To Vote |
|----------------------|-------------------|
| Ascension            |                   |
| Jefferson            | X                 |
| Livingston           |                   |
| Orleans              | X                 |
| Plaquemines          | X                 |
| St. Bernard          | X                 |
| St. Charles          | X                 |
| St. James            | X                 |
| St. John the Baptist | X                 |
| St. Tammany          | X                 |
| Tangipahoa           |                   |

3 projects will be selected







| PPL 22                             |  | Region 2 - BARATARIA BASIN |     |      |      |       |       |            |            |            |            |            |            |            |       |
|------------------------------------|--|----------------------------|-----|------|------|-------|-------|------------|------------|------------|------------|------------|------------|------------|-------|
| Proposal Number                    | Project Proposals  | CPRA                       | EPA | MAFS | WRCS | USACE | USFWS | Assessment | Assessment | Assessment | Assessment | Assessment | Assessment | Assessment | Total |
| R2-BA-01                           | Couba Island Armored Terrace Project                                     |                            |     |      |      |       |       |            |            |            |            |            |            |            | 0     |
| R2-BA-02                           | Bayou Dupont Sediment Delivery - Marsh Creation 3                        |                            |     |      |      |       |       |            |            |            |            |            |            |            | 0     |
| R2-BA-03                           | West Pointe a la Hache Marsh Creation South                              |                            |     |      |      |       |       |            |            |            |            |            |            |            | 0     |
| R2-BA-04                           | Freshwater Introduction into North of Lac des Allemands                  |                            |     |      |      |       |       |            |            |            |            |            |            |            | 0     |
| R2-BA-05                           | Bayou Villars Shoreline Stabilization                                    |                            |     |      |      |       |       |            |            |            |            |            |            |            | 0     |
| R2-BA-06                           | Caminada Headlands Back Barrier Marsh Creation                           |                            |     |      |      |       |       |            |            |            |            |            |            |            | 0     |
| R2-BA-07                           | South Lake Salvador Shoreline Restoration & Protection                   |                            |     |      |      |       |       |            |            |            |            |            |            |            | 0     |
| R2-BA-08                           | Northeast Turtle Bay Marsh Creation & Critical Area Shoreline Protection |                            |     |      |      |       |       |            |            |            |            |            |            |            | 0     |
| R2-BA-09                           | Bayou L'Ours Marsh Creation  |                            |     |      |      |       |       |            |            |            |            |            |            |            | 0     |
| R2-BA-10                           | Backfilling Canals in Jean Lafitte National Historical Park & Preserve   |                            |     |      |      |       |       |            |            |            |            |            |            |            | 0     |
| R2-BA-11                           | Bayou Grand Cheniere Marsh Ridge Restoration                             |                            |     |      |      |       |       |            |            |            |            |            |            |            | 0     |
| R2-BA-12                           | Elmer's Island Restoration   |                            |     |      |      |       |       |            |            |            |            |            |            |            | 0     |
| R2-BA-13                           | Highway 1 Marsh Creation & Terracing                                     |                            |     |      |      |       |       |            |            |            |            |            |            |            | 0     |
| R2-BA-14                           | Grand Bayou Marsh Creation   |                            |     |      |      |       |       |            |            |            |            |            |            |            | 0     |
| R2-BA-15                           | Grand Pierre Barrier Island Restoration                                  |                            |     |      |      |       |       |            |            |            |            |            |            |            | 0     |
| Rank 15 thru 1 for a total of =120 |  | 0                          | 0   | 0    | 0    | 0     | 0     | 0          | 0          | 0          | 0          | 0          | 0          | 0          | 0     |

Name, title, and entity representing \_\_\_\_\_

Signature \_\_\_\_\_

| Eligible Parishes:   | Signed Up To Vote |
|----------------------|-------------------|
| Assumption           |                   |
| Assumption           |                   |
| Jefferson            | X                 |
| Lafourche            | X                 |
| Orleans              | X                 |
| Plaquemines          | X                 |
| St. Charles          | X                 |
| St. James            | X                 |
| St. John the Baptist | X                 |

3 projects will be selected



**PPL 22** **Region 2 - BRETON SOUND BASIN**


| Proposal Number                   | Project Proposals  | CPRA | EPA | NMFS | NRCS | USACE | USFWS | Plaquemines | St. Bernard | Total |
|-----------------------------------|--|------|-----|------|------|-------|-------|-------------|-------------|-------|
| R2-BS-01                          | Wills Point Marsh Creation   |      |     |      |      |       |       |             |             | 0     |
| R2-BS-02                          | White Ditch Marsh Creation   |      |     |      |      |       |       |             |             | 0     |
| R2-BS-03                          | Delacroix Marsh Restoration  |      |     |      |      |       |       |             |             | 0     |
| R2-BS-04                          | Terracing & Marsh Creation South of Big Mar                              |      |     |      |      |       |       |             |             | 0     |
| R2-BS-05                          | Monsecour Siphon   |      |     |      |      |       |       |             |             | 0     |
| R2-BS-06                          | Breton Land Bridge Marsh creation (West), River aux Chenes to Grand Lake |      |     |      |      |       |       |             |             | 0     |
| RS-BS-07                          | Lake Lery Marsh Creation & Terracing                                     |      |     |      |      |       |       |             |             | 0     |
| RS-BS-08                          | Lonesome Island Restoration  |      |     |      |      |       |       |             |             | 0     |
| Rank 8 thru 1 for a total of = 36 |  | 0    | 0   | 0    | 0    | 0     | 0     | 0           | 0           | 0     |

Name, title, and entity representing \_\_\_\_\_

Signature \_\_\_\_\_

| Eligible Parishes: | Signed Up To Vote |
|--------------------|-------------------|
| Plaquemines        | X                 |
| St. Bernard        | X                 |

2 projects will be selected



**PPL 22** **Region 2 - MISSISSIPPI RIVER DELTA BASIN**


| Proposal Number                  | Project Proposals   | CPRA | EPA | NMFS | NRCS | USACE | USFWS | Plaquemines | Total |
|----------------------------------|---|------|-----|------|------|-------|-------|-------------|-------|
| R2-MR-01                         | Pass a Loutre Wildlife Mgmt Area Marsh Creation Utilizing Gulf Saver Bags |      |     |      |      |       |       |             | 0     |
| R2-MR-02                         | Pass a Loutre Hydrologic Restoration                                      |      |     |      |      |       |       |             | 0     |
| R2-MR-03                         | Pass a Loutre Crevasse  |      |     |      |      |       |       |             | 0     |
| Rank 3 thru 1 for a total of = 6 |   | 0    | 0   | 0    | 0    | 0     | 0     | 0           | 0     |

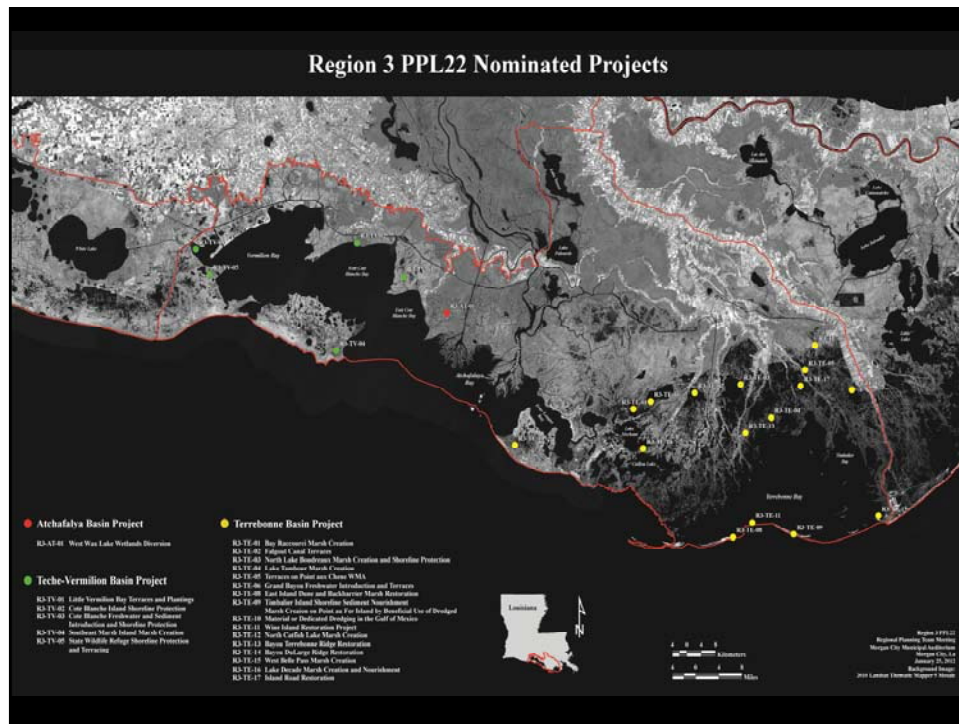
Name, title, and entity representing \_\_\_\_\_

Signature \_\_\_\_\_

| Eligible Parishes: | Signed Up To Vote |
|--------------------|-------------------|
| Plaquemines        | X                 |

2 project will be selected





| PPL 22                              |  | Region 3 - TERREBONNE BASIN |     |     |      |       |       |            |           |        |            |          |            |       |
|-------------------------------------|--|-----------------------------|-----|-----|------|-------|-------|------------|-----------|--------|------------|----------|------------|-------|
| Proposal Number                     | Project Proposals  | CPWA                        | SPA | NPS | NRCS | USACE | USFWS | Assumption | Lafourche | Iberia | St. Martin | St. Mary | Terrebonne | Total |
| R3-TE-01                            | Bay Raccorel Marsh Creation                                |                             |     |     |      |       |       |            |           |        |            |          |            | 0     |
| R3-TE-02                            | Falgout Canal Terraces                                     |                             |     |     |      |       |       |            |           |        |            |          |            | 0     |
| R3-TE-03                            | North Lake Boudreaux Marsh Creation & Shoreline Protection |                             |     |     |      |       |       |            |           |        |            |          |            | 0     |
| R3-TE-04                            | Lake Tambour Marsh Creation                                |                             |     |     |      |       |       |            |           |        |            |          |            | 0     |
| R3-TE-05                            | Terraces on Point aux Chene WMA                            |                             |     |     |      |       |       |            |           |        |            |          |            | 0     |
| R3-TE-06                            | Grand Bayou Freshwater Enhancement/Introduction & Terraces |                             |     |     |      |       |       |            |           |        |            |          |            | 0     |
| R3-TE-08                            | East Island Beach & Barrier Marsh Restoration              |                             |     |     |      |       |       |            |           |        |            |          |            | 0     |
| R3-TE-09                            | Timbalier Island Shoreline Sediment Nourishment            |                             |     |     |      |       |       |            |           |        |            |          |            | 0     |
| R3-TE-10                            | Marsh Creation on Point au Fer Island by Beneficial Use    |                             |     |     |      |       |       |            |           |        |            |          |            | 0     |
| R3-TE-11                            | Wine Island Restoration                                    |                             |     |     |      |       |       |            |           |        |            |          |            | 0     |
| R3-TE-12                            | North Catfish Lake Marsh Creation                          |                             |     |     |      |       |       |            |           |        |            |          |            | 0     |
| R3-TE-13                            | Bayou Terrebonne Ridge Restoration                         |                             |     |     |      |       |       |            |           |        |            |          |            | 0     |
| R3-TE-14                            | Bayou DuLarge Ridge Restoration                            |                             |     |     |      |       |       |            |           |        |            |          |            | 0     |
| R3-TE-15                            | West Belle Pass Marsh Creation                             |                             |     |     |      |       |       |            |           |        |            |          |            | 0     |
| R3-TE-16                            | Lake Decade Marsh Creation & Nourishment                   |                             |     |     |      |       |       |            |           |        |            |          |            | 0     |
| R3-TE-17                            | Island Road Restoration                                    |                             |     |     |      |       |       |            |           |        |            |          |            | 0     |
| Rank 16 thru 1 for a total of = 136 |  | 0                           | 0   | 0   | 0    | 0     | 0     | 0          | 0         | 0      | 0          | 0        | 0          | 0     |

Name, title, and entity representing \_\_\_\_\_

Signature \_\_\_\_\_

| Eligible Parishes: | Signed Up To Vote |
|--------------------|-------------------|
| Assumption         | X                 |
| Lafourche          | X                 |
| Iberia             | X                 |
| St. Martin         | X                 |
| St. Mary           | X                 |
| Terrebonne         | X                 |

3 projects will be selected

## PPL 22 Region 3 - ATCHAFALAYA BASIN

| Proposal Number | Project Proposals                | CPRA | EPA | NMFS | NRCS | USACE | USFWS | Iberia | St. Mary | Terrebonne | Total |
|-----------------|----------------------------------|------|-----|------|------|-------|-------|--------|----------|------------|-------|
| R3-AT-01        | West Wax Lake Wetlands Diversion |      |     |      |      |       |       |        |          |            | 0     |
|                 | Selected by default              | 0    | 0   | 0    | 0    | 0     | 0     | 0      | 0        | 0          |       |

\_\_\_\_\_  
Name, title, and entity representing

\_\_\_\_\_  
Signature

| Eligible Parishes: | Signed Up To Vote |
|--------------------|-------------------|
| Iberia             | X                 |
| St. Mary           | X                 |
| Terrebonne         | X                 |

1 project will be selected

**Selected by default, no vote necessary**



## PPL 22 Region 3 - TECHE-VERMILION BASIN

| Proposal Number | Project Proposals  | CPRA | EPA | NMFS | NRCS | USACE | USFWS | Iberia | St. Mary | Vermilion | Total |
|-----------------|--|------|-----|------|------|-------|-------|--------|----------|-----------|-------|
| R3-TV-01        | South Little Vermilion Bay Terracing & Planting                        |      |     |      |      |       |       |        |          |           | 0     |
| R3-TV-02        | Cote Blanche Island Shoreline Protection                               |      |     |      |      |       |       |        |          |           | 0     |
| R3-TV-03        | Cote Blanche Freshwater & Sediment Introduction & Shoreline Protection |      |     |      |      |       |       |        |          |           | 0     |
| R3-TV-04        | Southeast Marsh Island Marsh Creation                                  |      |     |      |      |       |       |        |          |           | 0     |
| R3-TV-05        | State Wildlife Refuge Shoreline Protection & Terrace                   |      |     |      |      |       |       |        |          |           | 0     |
|                 | Rank 5 thru 1 for a total of = 15                                      | 0    | 0   | 0    | 0    | 0     | 0     | 0      | 0        | 0         |       |

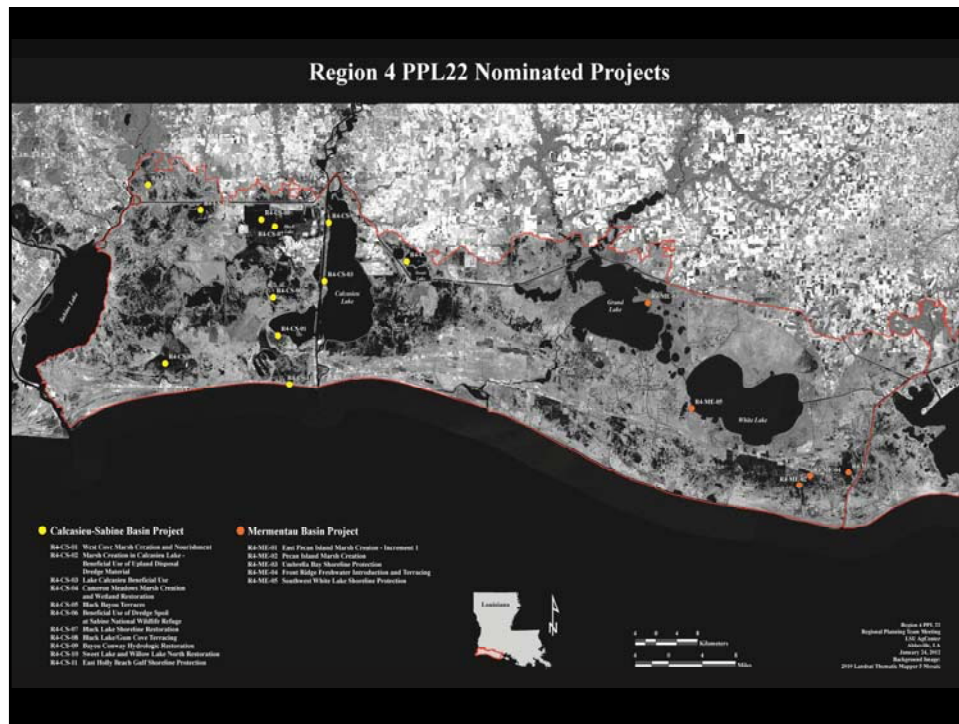
\_\_\_\_\_  
Name, title, and entity representing

\_\_\_\_\_  
Signature

| Eligible Parishes: | Signed Up To Vote |
|--------------------|-------------------|
| Iberia             | X                 |
| St. Mary           |                   |
| Vermilion          | X                 |

2 projects will be selected






| PPL 22 Region 4 - CALCASIEU-SABINE BASIN |   |      |     |      |      |       |       |         |           |       |
|--|---|------|-----|------|------|-------|-------|---------|-----------|-------|
| Proposal Number                          | Project Proposals   | CPRA | EPA | NMFS | NRCS | USACE | USFWS | Cameron | Calcasieu | Total |
| R4-CS-01                                 | West Cove Marsh Creation & Nourishment  |      |     |      |      |       |       |         |           | 0     |
| R4-CS-02                                 | Marsh Creation in Calcasieu Lake - Beneficial Use of Upland-Disposed Dredged Material |      |     |      |      |       |       |         |           | 0     |
| R4-CS-03                                 | Lake Calcasieu Beneficial Use   |      |     |      |      |       |       |         |           | 0     |
| R4-CS-04                                 | Cameron Meadows Marsh Creation & Wetland Restoration                                  |      |     |      |      |       |       |         |           | 0     |
| R4-CS-05                                 | Black Bayou Terraces  |      |     |      |      |       |       |         |           | 0     |
| R4-CS-06                                 | Beneficial Use of Dredge Spoil at Sabine National Wildlife Refuge                     |      |     |      |      |       |       |         |           | 0     |
| R4-CS-07                                 | Black Lake Shoreline Restoration  |      |     |      |      |       |       |         |           | 0     |
| R4-CS-08                                 | Black Lake/Gum Cove Terracing   |      |     |      |      |       |       |         |           | 0     |
| R4-CS-09                                 | Conway Bayou Hydrologic Restoration   |      |     |      |      |       |       |         |           | 0     |
| R4-CS-10                                 | Sweet Lake & Willow Lake North Shoreline Restoration                                  |      |     |      |      |       |       |         |           | 0     |
| R4-CS-11                                 | East Holly Beach Gulf Shoreline Protection  |      |     |      |      |       |       |         |           | 0     |
| Rank 11 thru 1 for a total of = 66       |   | 0    | 0   | 0    | 0    | 0     | 0     | 0       | 0         |       |

Name, title, and entity representing \_\_\_\_\_

Signature \_\_\_\_\_

|                    |                   |
|--------------------|-------------------|
| Eligible Parishes: | Signed Up To Vote |
| Calcasieu          | X                 |
| Cameron            | X                 |

  
 2 projects will be selected



## COASTWIDE PROJECTS

Name, title, and entity representing

Signature \_\_\_\_\_

## COASTWIDE PROJECTS

1 project will be selected



#### Coastwide DEMONSTRATION PROJECTS





## 4. Adjourn

