



Long Point Bayou Marsh Creation (CS-85)

Project Status

Approved Date: 2019 **Project Area:** aaaArea
Approved Funds: \$2.29 M **Total Est. Cost:** \$13.0 M
Net Benefit After 20 Years: 311 acres
Status: Engineering and Design
Project Type: Marsh Creation
PPL #: 28

Location

Region 4, Calcasieu/Sabine Basin, Cameron Parish, approximately 4 miles south of Hackberry between LA Highway 27 and Calcasieu Ship Channel.

Problems

The project area is in an area that has been influenced by saltwater intrusion, increased water fluctuations and erosion. Human alterations have disrupted the hydrologic processes which contributed to wetland building and maintenance, while subsidence and sea level rise continues. Almost all fresh marsh was converted to intermediate and brackish by the late 1970s due to saltwater intrusion and increased tidal influence. Land loss rates within the project area now show a positive trend; the experimental land change analysis conducted by USGS for the extended project boundary shows a land gain of +0.46% per year (1985 to 2020) in the project area. Historical topographic maps show that the area was nearly all land in 1955.



Photo of project site taken on May 8th, 2018.

Restoration Strategy

This project will create/nourish 395 acres of marsh approximately 4 miles south of Hackberry, north of and including portions of the Sabine National Wildlife Refuge, east of Highway LA 27, and west of the Calcasieu Ship Channel near Mile 11. This project will beneficially use dredged material from the Calcasieu Ship Channel between River Miles 5-17 placed into shallow open water sites within the project area. Constructed containment dikes would be breached/gapped and/or degraded, as needed, to provide tidal exchange after fill materials settle and consolidate. The project would create 311 acres of marsh, nourish at least 76 acres of existing fragmented marsh, and create 8 acres of tidal creeks. A target fill elevation of +2.75 feet (NAVD88) is envisioned to enhance longevity of this land form. Additionally, 198 acres of vegetative plantings will be included. The Environmental Protection Agency's strategic plan goals include "Work with partners to protect and restore wetlands and coastal and ocean water resources." In addition, this project would restore habitat potentially used by the saltmarsh topminnow, which is petitioned/proposed for Federal listing as threatened/endangered species, and the threatened black rail. The project may also benefit neotropical migratory birds.

Progress to Date

The project was approved for Phase 1 Engineering and Design in February 2019. The 30% and 95% design reviews were conducted on March 31, 2021, and September 28, 2021, respectively. The project is expected to compete for Phase 2 Construction funding in December 2021.

This project is on Priority Project List 28.

For more information, please contact:





Federal Sponsor:
U.S. Environmental Protection Agency
Dallas, TX
(214) 665-6722



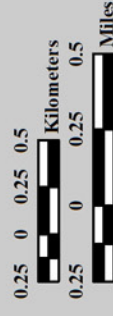
Local Sponsor:
Coastal Protection and Restoration Authority
Baton Rouge, LA
(225) 342-4733

Long Point Bayou Marsh Creation (CS-85)

 Marsh Creation *

 Project Boundary

*denotes proposed features



Map Produced by:
U.S. Department of the Interior
U.S. Geological Survey
Wetland and Aquatic Research Center
Coastal Restoration Assessment Branch
Baton Rouge, La.

Background Imagery:
2019 NAIP CIR

Map Date: August 3, 2021
Map ID: USGS-NWRC 2021-11-0026
Data accurate as of: July 1, 2021

