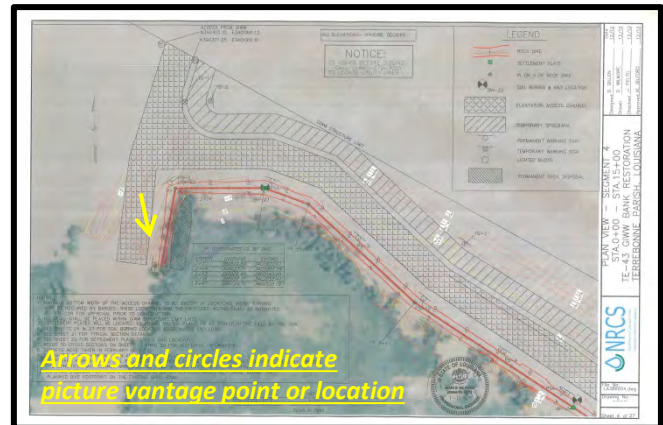


Arrows and circles indicate picture vantage point or location

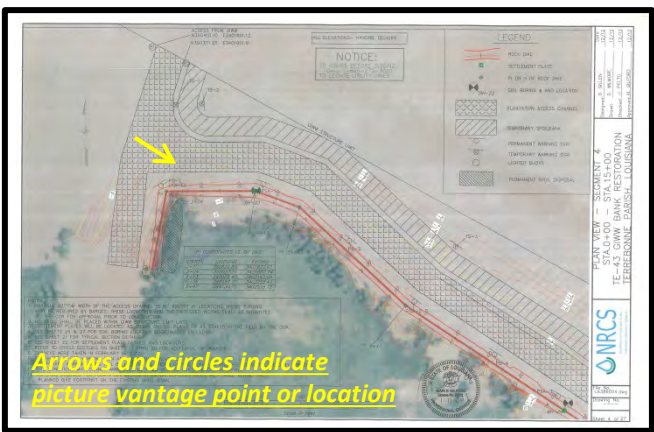
- Second lift of Rip Rap at Copesaw canal.
- 0+20 to 2+04 in view in this pic
- Water Surface elevation +1.95 ft.



- Second lift of Rip Rap at Copesaw canal.
- 0+00 to 0+75 in view in this pic
- Water Surface elevation +1.95 ft.

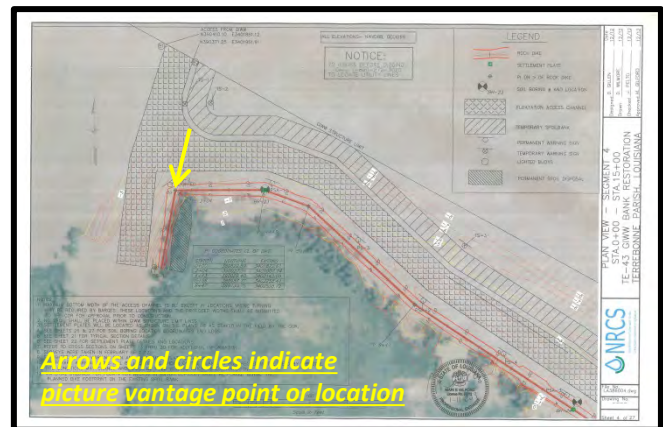


**PI 4+43**



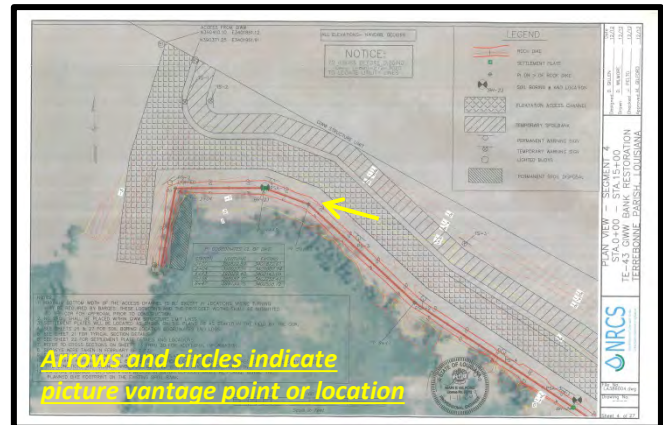
**Arrows and circles indicate picture vantage point or location**

- Second lift of Rip Rap.
- Picture taken from Copesaw Canal.
- Water elev +1.95 ft



Arrows and circles indicate picture vantage point or location

- Second lift of Rip Rap at Copesaw canal.
- PI 2+04 in view.
- Water surface elevation +1.95 feet.



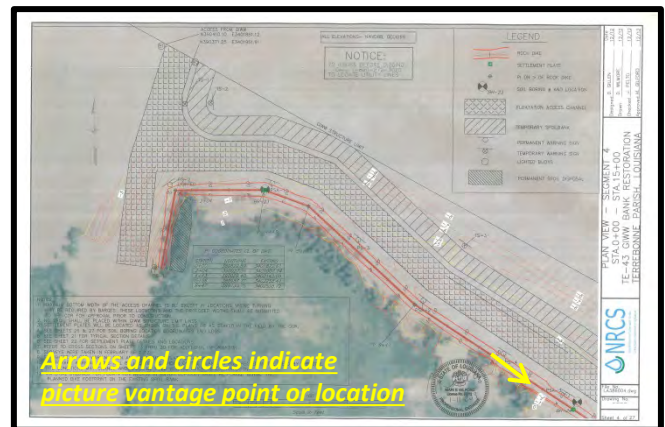
Arrows and circles indicate picture vantage point or location

- Second lift of Rip Rap.
- Settlement plate SP-23 in view at 4+43.





**PI 16+29**

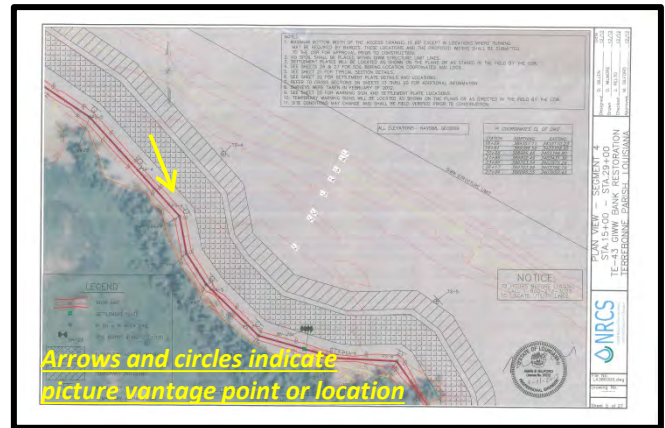


**Arrows and circles indicate picture vantage point or location**

- Second Lift of Rip Rap.
- Water elev +1.95 ft



**PI 19+94**



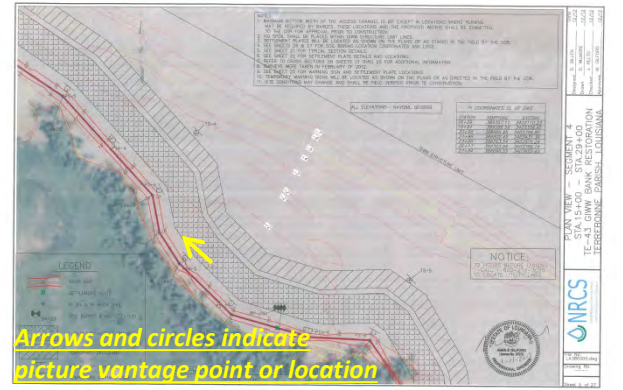
**Arrows and circles indicate picture vantage point or location**

- Second Lift of Rip Rap.
- Water elev +1.95 ft



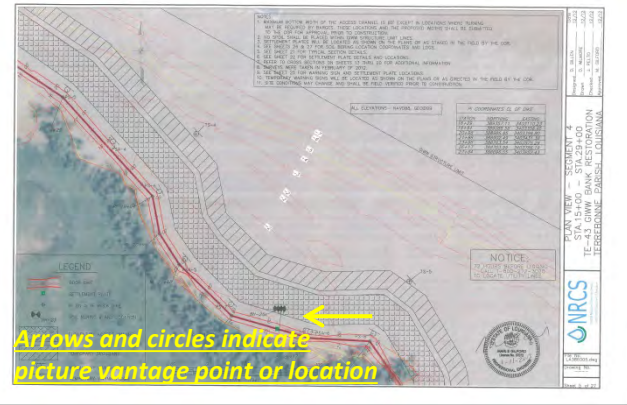


PI 21+98



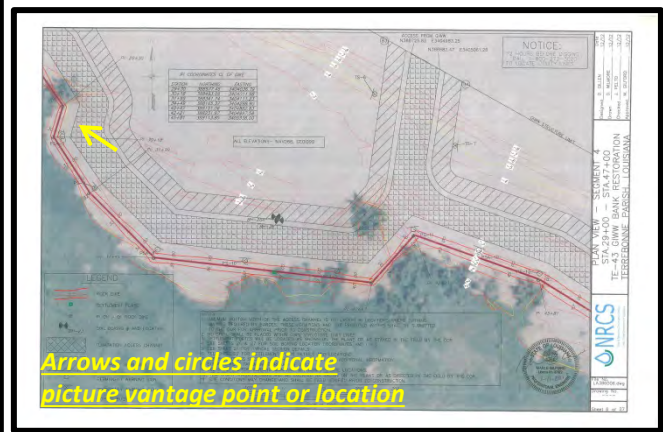
- Second Lift of Rip Rap.
- Water elev +1.95 ft

**PI 23+98**

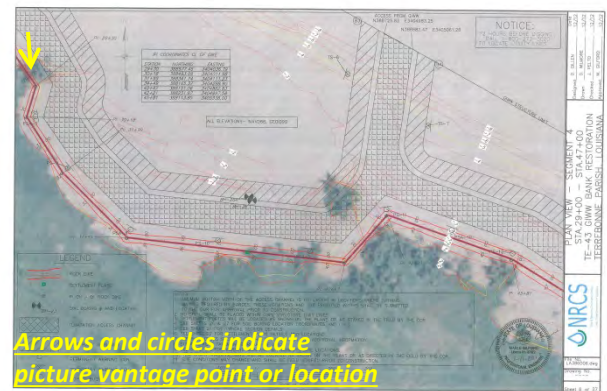


- First Lift of Rip Rap.
- Water elevation +1.95 ft.
- SP25 in view.

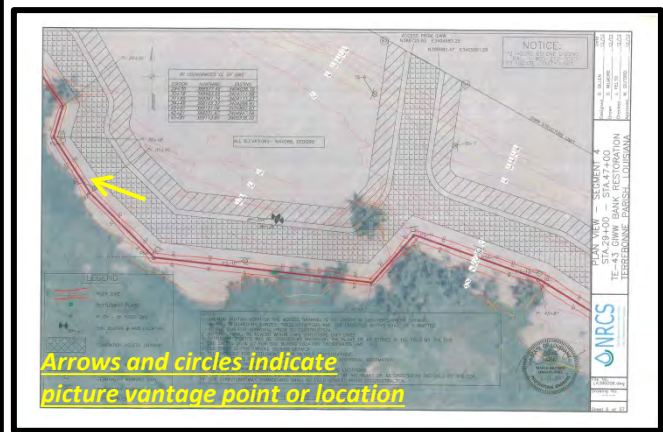




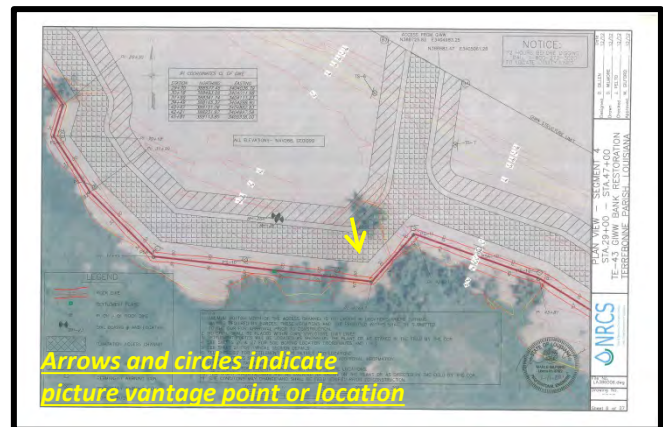
- Second Lift of Rip Rap.
- Water Elev +1.95 ft



- Second Lift of Rip Rap.
- Excavator in view placing second lift of rip rap
- Water elev +1.95 feet



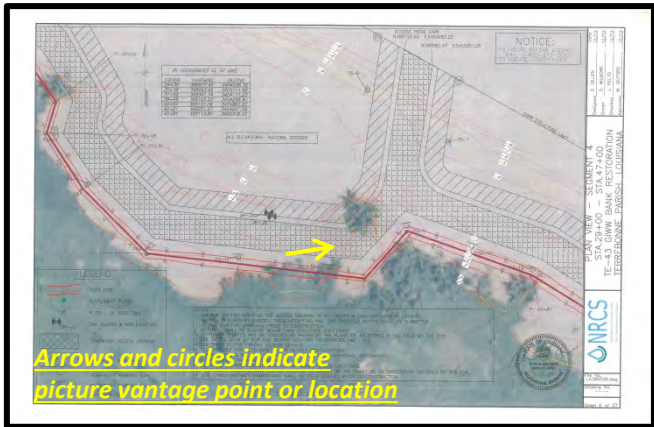
- First Lift of Rip Rap.
- Excavator in view placing second lift of rip rap
- Water elev +1.95 feet



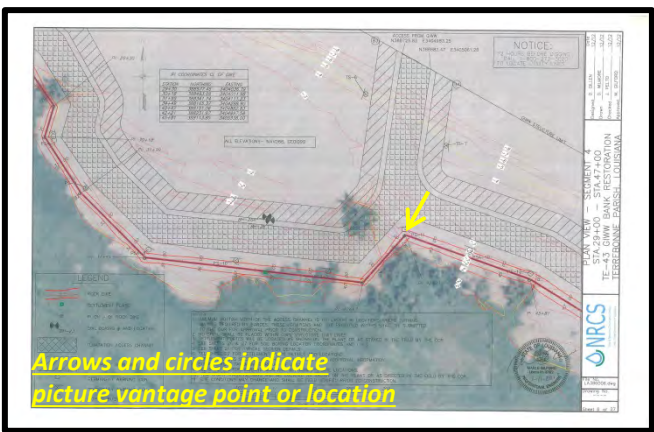
Arrows and circles indicate picture vantage point or location

- First Lift of Rip Rap.
- Water elev +1.95 feet





- First Lift of Rip Rap.
- Water elev +1.95 feet



Arrows and circles indicate picture vantage point or location

- First Lift of Rip Rap.
- Water elev +1.95 feet

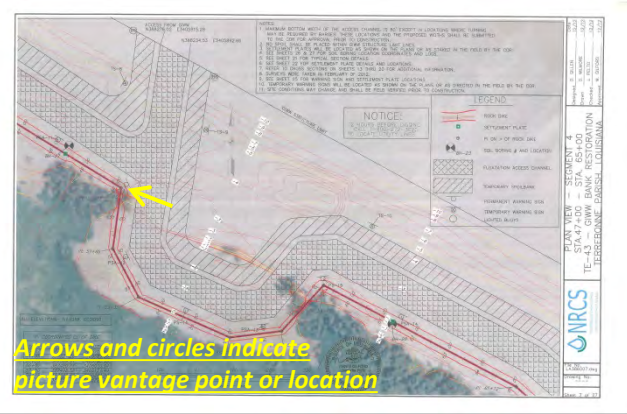






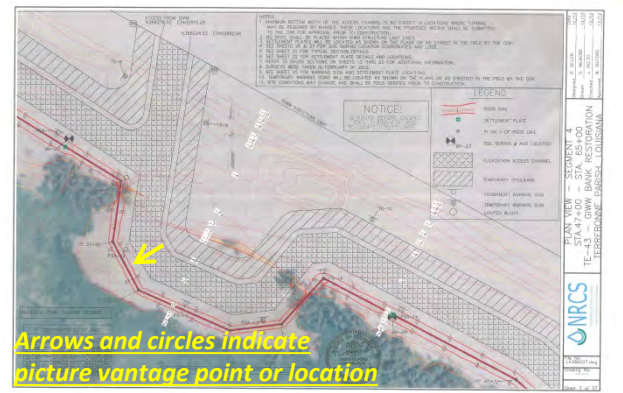


**PI 50+17**



- Second Lift of Rip Rap.
- Water elev +1.95 feet

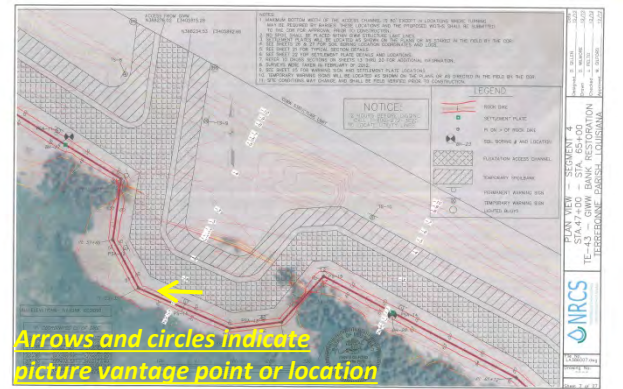




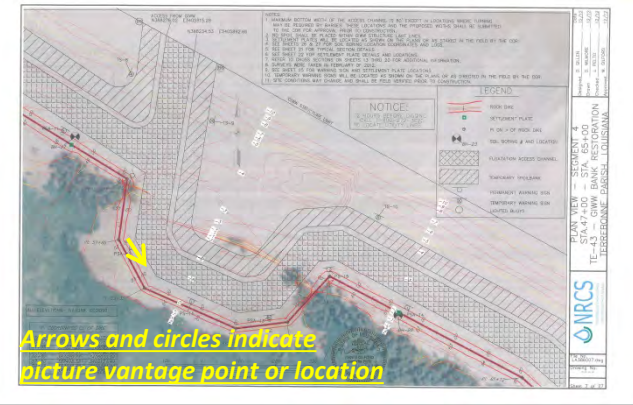
Arrows and circles indicate picture vantage point or location

- Second Lift of Rip Rap.
- Water elev +1.95 feet



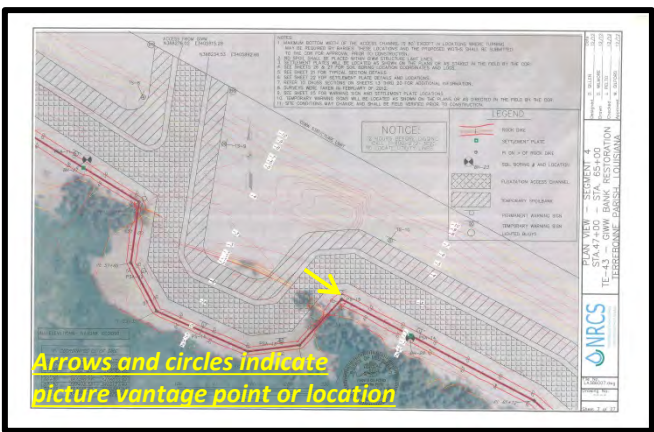


- Second Lift of Rip Rap.
- Water elev +1.95 feet



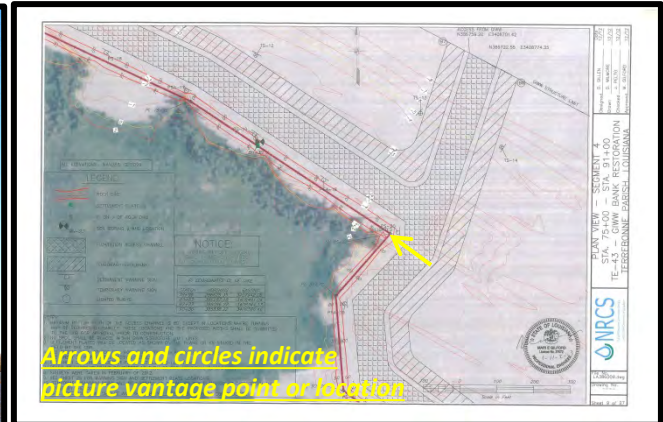
Arrows and circles indicate picture vantage point or location

- Second Lift of Rip Rap.
- Water elev +1.95 feet

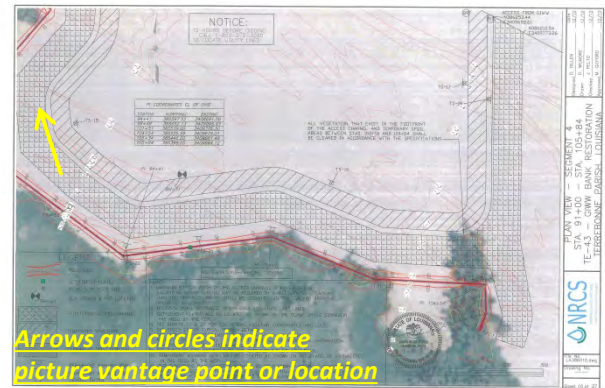


- First Lift of Rip Rap.
- Water elev +1.95 feet
- This is what the majority of the first lift looks like from 59+10 to about 103+00



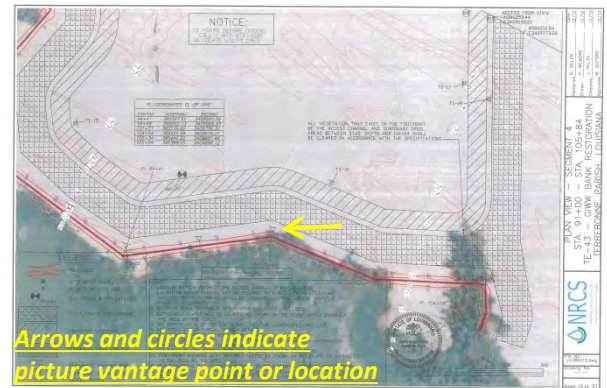


- First Lift Rip Rap
- Water elev +1.95 feet



- First Lift Rip Rap
- Water elev +1.95 feet

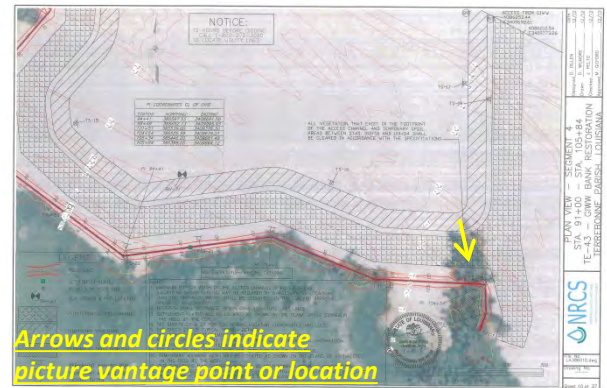




Arrows and circles indicate picture vantage point or location

- First Lift Rip Rap
- SP-31 in view
- Water elev +1.95 feet

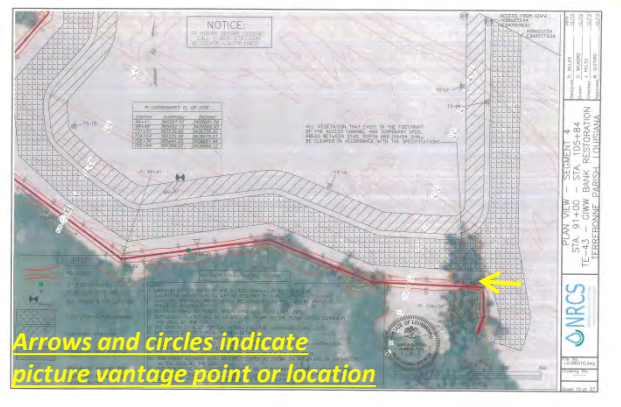




- First Lift Rip Rap
- Water elev +1.95 feet



**PI 104+54**



**Arrows and circles indicate picture vantage point or location**

- First Lift Rip Rap
- Water elev +1.95 feet





- Second Lift Rip Rap
- Rip rap barges in Staging area on north side of GIWW across from project area.





- Second Lift Rip Rap
- Examples of contractor marking the top width (orange) and centerline (blue) of dike while placing and surveying rip rap.

